



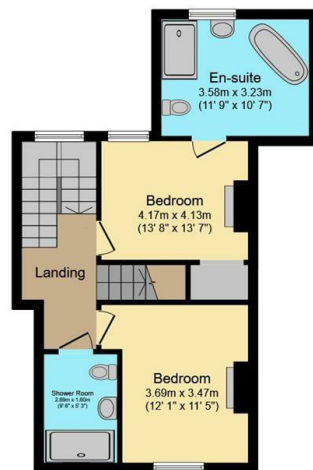
131 Whitham Road, Sheffield, S10 2SN

Offers Over £350,000

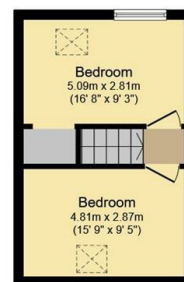
- No onward chain
- Four double bedrooms
- Short walk to fantastic local shops, cafes and restaurants
- Within catchment area of highly regarded schools
- Stunning Victorian property
- Two bathrooms
- Walking distance to many hospitals, the city centre and the University of Sheffield
- Two reception rooms
- Downstairs WC
- Long leasehold



Ground Floor
Floor area 51.4 sq.m. (553 sq.ft.)



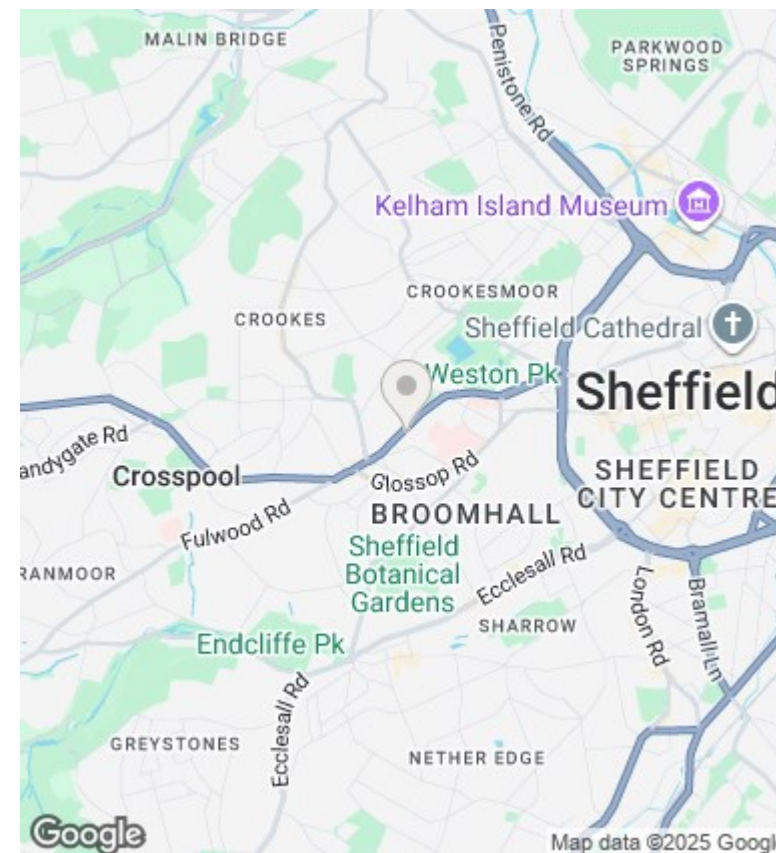
First Floor
Floor area 44.6 sq.m. (480 sq.ft.)



Second Floor
Floor area 21.2 sq.m. (228 sq.ft.)

Total floor area: 117.2 sq.m. (1,261 sq.ft.)

This floor plan is for illustrative purposes only. It is not drawn to scale. Any measurements, floor areas (including any total floor area), openings and orientations are approximate. No details are guaranteed, they cannot be relied upon for any purpose and do not form any part of any agreement. No liability is taken for any error, omission or misstatement. A party must rely upon its own inspection(s). Powered by www.Propertybox.io



Directions

Viewings

Viewings by arrangement only. Call 01142 687777 to make an appointment.

Council Tax Band

C

EPC Rating:

E

Energy Efficiency Rating		
	Current	Potential
Very energy efficient - lower running costs		
(92 plus) A		
(81-91) B		
(69-80) C		76
(55-68) D		
(39-54) E	44	
(21-38) F		
(1-20) G		
Not energy efficient - higher running costs		
England & Wales		EU Directive 2002/91/EC