



## 356 Sharrow Lane, Sheffield, S11 8AU

Offers Over £500,000

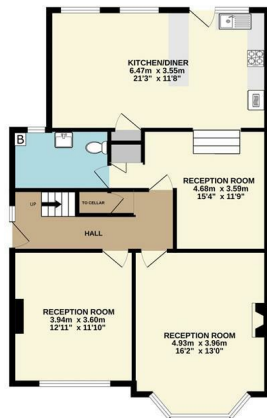
- No onward chain
- Nearly 2,000ft<sup>2</sup> of floor space
- Three bathrooms and a downstairs WC
- Freehold
- Rare detached property
- Three reception rooms
- Fantastic location
- Off street parking
- Four bedrooms
- Requires modernisation



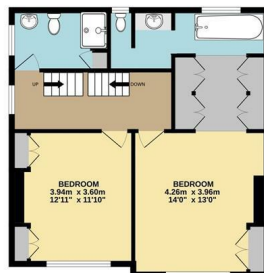
CELLAR  
11.4m x 11.1m (375 sq.ft.) approx.



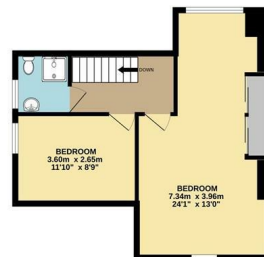
GROUND FLOOR  
80.3 sq.m. (864 sq.ft.) approx.



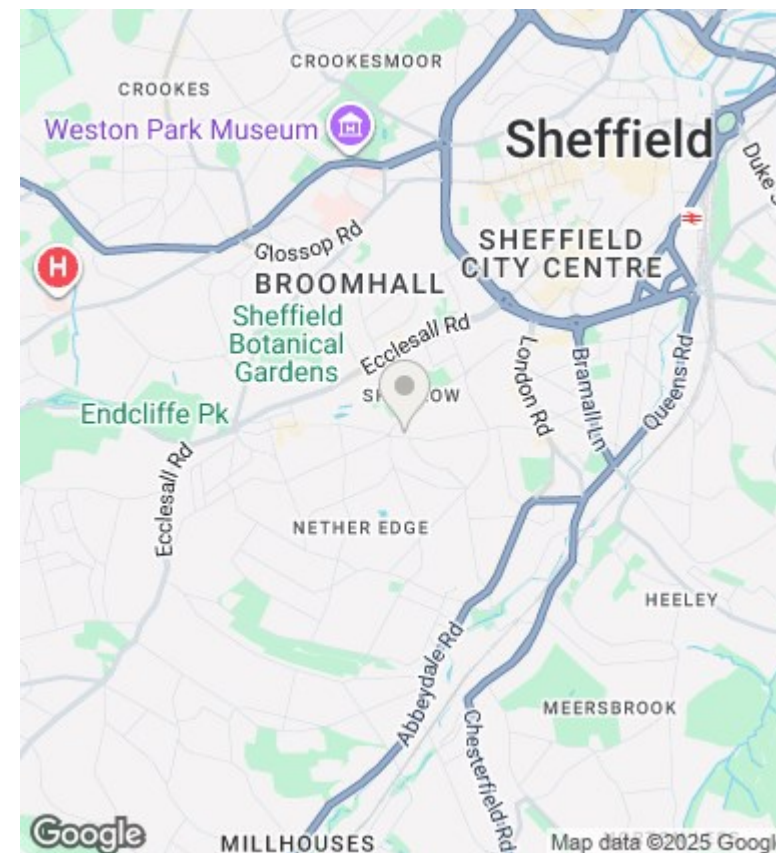
1ST FLOOR  
57.3 sq.m. (617 sq.ft.) approx.



ATTIC  
42.3 sq.m. (455 sq.ft.) approx.



TOTAL FLOOR AREA: 193.3 sq.m. (2081 sq.ft.) approx.  
Measurements are approximate. Not to scale. Illustrative purposes only  
Made with Metroplex ©2025



## Directions

## Viewings

Viewings by arrangement only. Call 01142 687777 to make an appointment.

## Council Tax Band

C

## EPC Rating:

D

Energy Efficiency Rating		
	Current	Potential
Very energy efficient - lower running costs		
(92 plus) A		
(81-91) B		
(69-80) C		75
(55-68) D	62	
(39-54) E		
(21-38) F		
(1-20) G		
Not energy efficient - higher running costs		
England & Wales	EU Directive 2002/91/EC	