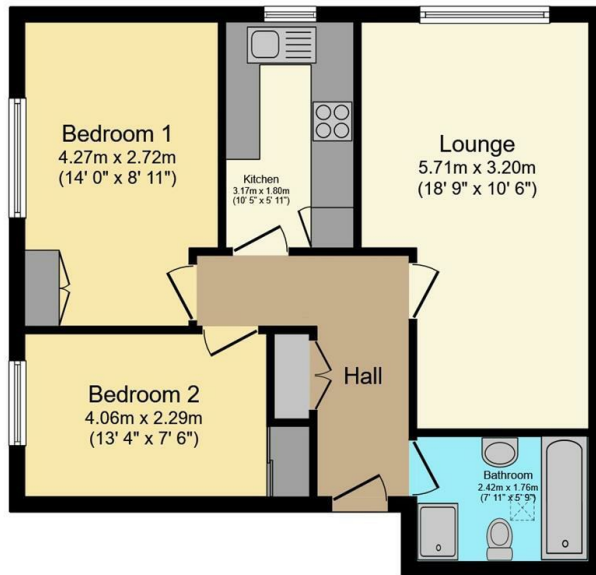




## 59 Hallam Grange Close, Upper Fulwood, Sheffield, S10 4BN

Offers Over £180,000

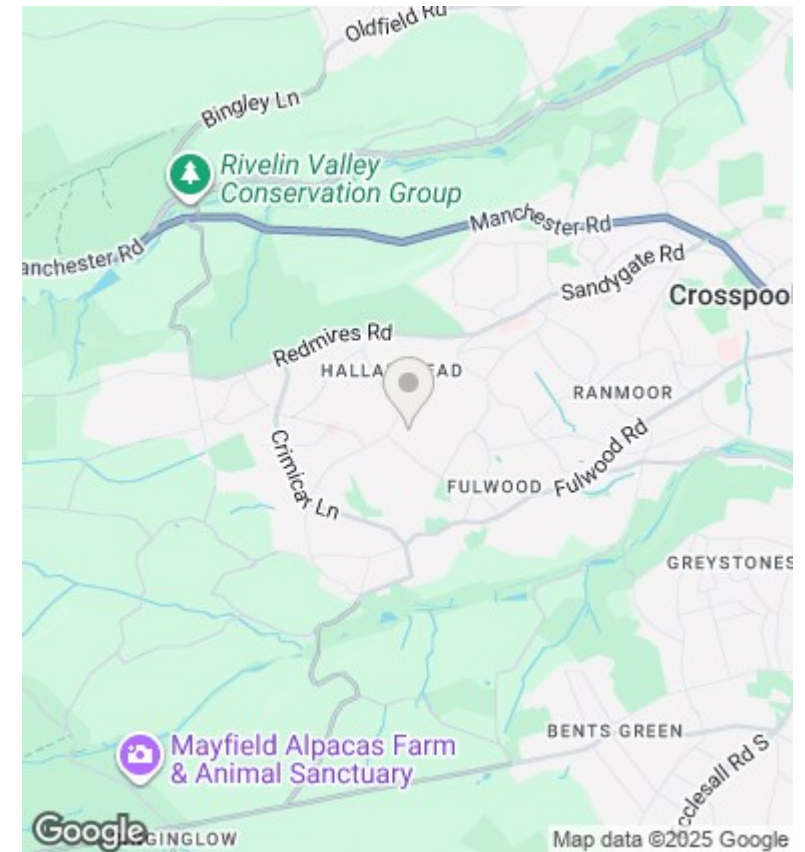
- Quiet development
- Modern kitchen
- Well maintained communal gardens
- Top floor apartment
- Beautiful bathroom with bath and separate shower
- Fantastic views
- Off street parking and a garage
- Two double bedrooms



**Floor Plan**  
Floor area 54.9 sq.m. (591 sq.ft.)

Total floor area: 54.9 sq.m. (591 sq.ft.)

This floor plan is for illustrative purposes only. It is not drawn to scale. Any measurements, floor areas (including any total floor area), openings and orientations are approximate. No details are guaranteed, they cannot be relied upon for any purpose and do not form any part of any agreement. No liability is taken for any error, omission or misstatement. A party must rely upon its own inspection(s). Powered by [www.Propertybox.io](http://www.Propertybox.io)



## Directions

## Viewings

Viewings by arrangement only. Call 01142 687777 to make an appointment.

## Council Tax Band

C

## EPC Rating:

C

Energy Efficiency Rating		
	Current	Potential
Very energy efficient - lower running costs		
(92 plus) <b>A</b>		
(81-91) <b>B</b>		
(69-80) <b>C</b>	69	78
(55-68) <b>D</b>		
(39-54) <b>E</b>		
(21-38) <b>F</b>		
(1-20) <b>G</b>		
Not energy efficient - higher running costs		
<b>England &amp; Wales</b>	EU Directive 2002/91/EC	