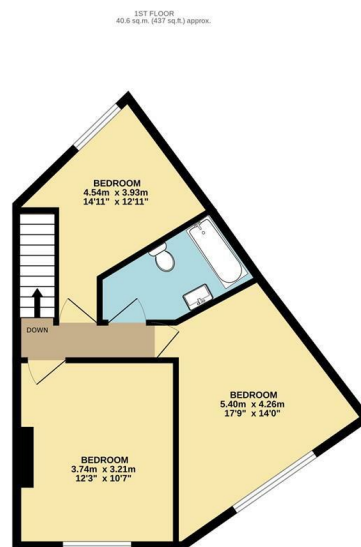
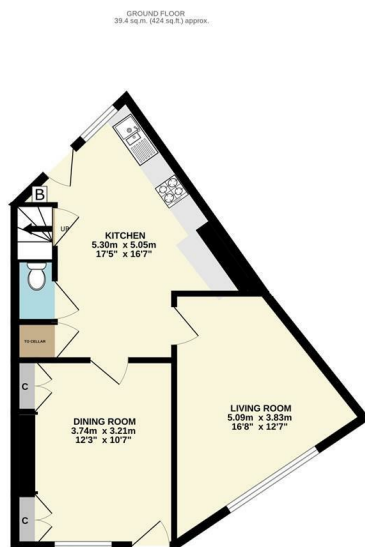
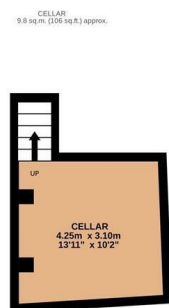




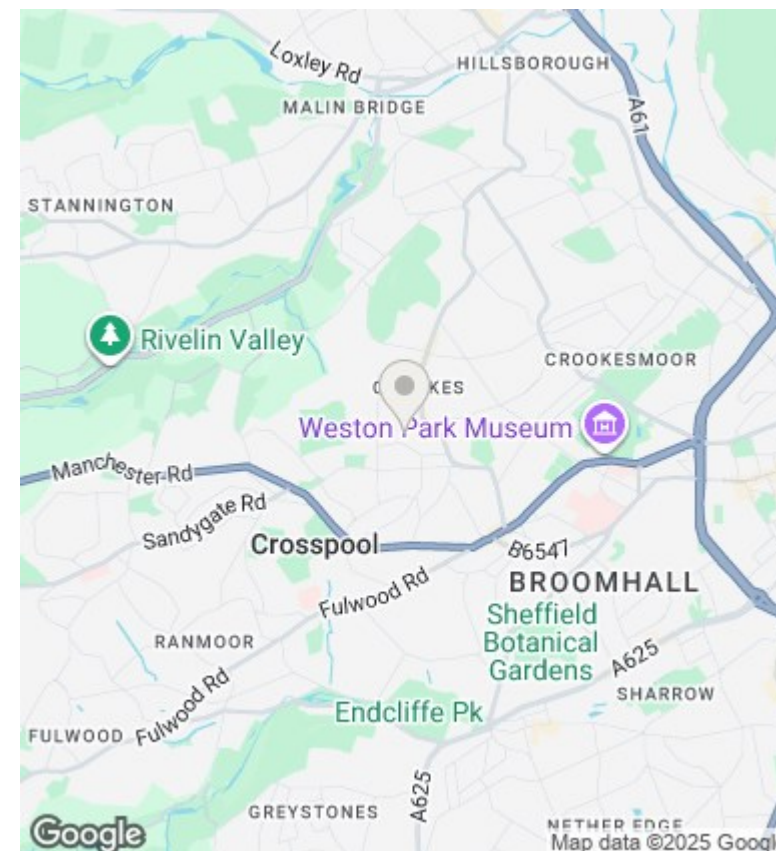
## 35 St. Thomas Road, Sheffield, S10 1UW

Offers Over £280,000

- Unique mid-terrace
- South facing rear garden
- Short walk to fantastic shops and cafes in Crookes
- In the catchment area for popular schools
- Two reception rooms
- No rights of way from neighbours
- Walking distance to the city centre, central hospitals and sheffield university
- Three double bedrooms
- Perfect for first time buyers
- Freehold



TOTAL FLOOR AREA: 89.8 sq.m. (966 sq.ft.) approx.  
Measurements are approximate. Not to scale. Illustrative purposes only  
Made with Metropix ©2025



## Directions

## Viewings

Viewings by arrangement only. Call 01142 687777 to make an appointment.

## Council Tax Band

C

## EPC Rating:

D

Energy Efficiency Rating		
	Current	Potential
Very energy efficient - lower running costs		
(92-plus) <b>A</b>		
(81-91) <b>B</b>		
(69-80) <b>C</b>		78
(55-68) <b>D</b>	67	
(39-54) <b>E</b>		
(21-38) <b>F</b>		
(1-20) <b>G</b>		
Not energy efficient - higher running costs		
England & Wales		EU Directive 2002/91/EC