

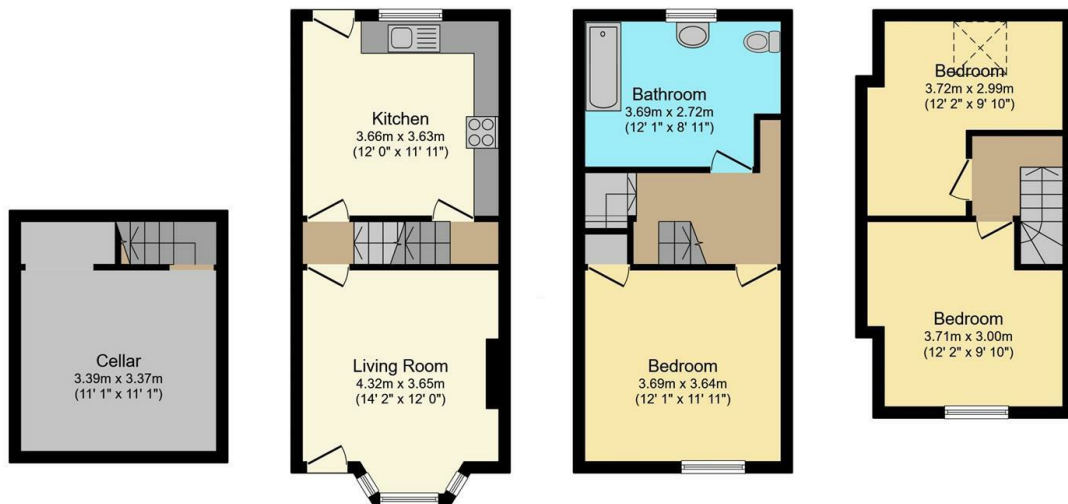


350 Gleadless Road, Sheffield, S2 3AJ

Offers Over £150,000

- Perfect for a first-time buyer
- Three bedrooms
- New roof in 2023
- Living room with a bay window
- Large bathroom
- Long leasehold
- Spacious dining kitchen
- Short walk to local shops
- Bus routes to the city centre





Cellar
Floor area 15.6 sq.m. (168 sq.ft.)

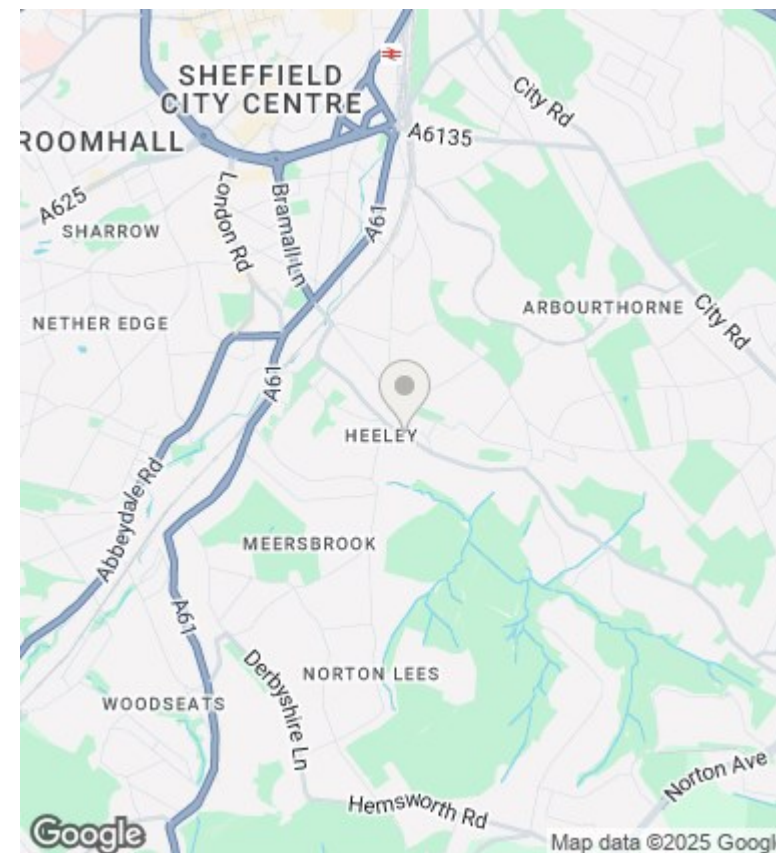
Ground Floor
Floor area 31.0 sq.m. (333 sq.ft.)

First Floor
Floor area 30.0 sq.m. (323 sq.ft.)

Second Floor
Floor area 25.3 sq.m. (273 sq.ft.)

Total floor area: 101.9 sq.m. (1,097 sq.ft.)

This floor plan is for illustrative purposes only. It is not drawn to scale. Any measurements, floor areas (including any total floor area), openings and orientations are approximate. No details are guaranteed, they cannot be relied upon for any purpose and do not form any part of any agreement. No liability is taken for any error, omission or misstatement. A party must rely upon its own inspection(s). Powered by www.Propertybox.io



Directions

Viewings

Viewings by arrangement only. Call 01142 687777 to make an appointment.

Council Tax Band

B

EPC Rating:

C

Energy Efficiency Rating		
	Current	Potential
Very energy efficient - lower running costs		
(92 plus) A		
(81-91) B		82
(69-80) C	71	
(55-68) D		
(39-54) E		
(21-38) F		
(1-20) G		
Not energy efficient - higher running costs		
England & Wales	EU Directive 2002/91/EC	