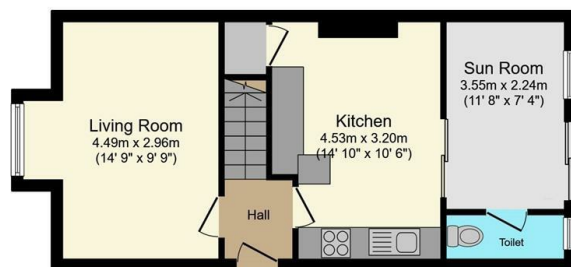




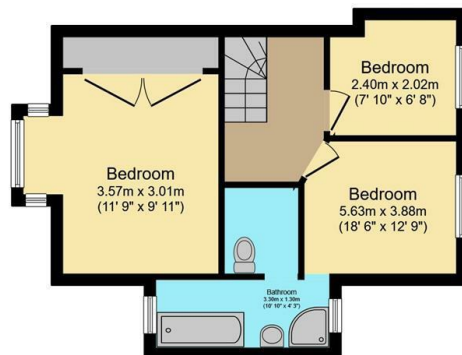
## 386 Loxley Road, Sheffield, S6 4TJ

Offers Over £230,000

- No onward chain
- Requires modernisation
- Within catchment area of Ofsted rated good schools
- Close to Loxley and Hillsborough
- Semi-detached
- Fantastic potential
- Freehold
- Off street parking
- Three bedrooms
- Short walk to beautiful countryside



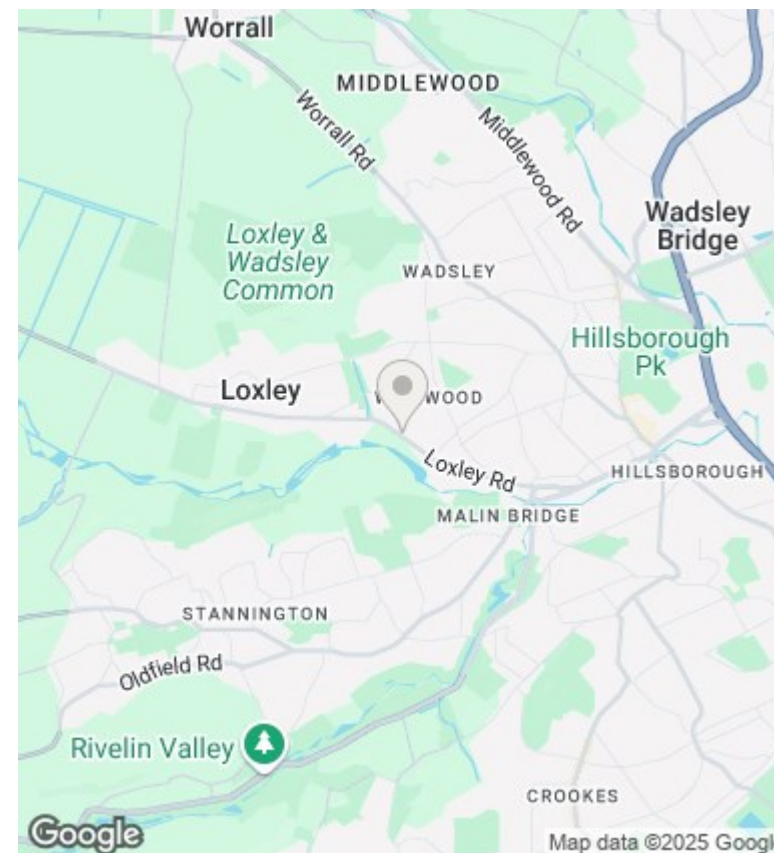
**Ground Floor**  
Floor area 43.8 sq.m. (471 sq.ft.)



**First Floor**  
Floor area 39.8 sq.m. (428 sq.ft.)

Total floor area: 83.6 sq.m. (899 sq.ft.)

This floor plan is for illustrative purposes only. It is not drawn to scale. Any measurements, floor areas (including any total floor area), openings and orientations are approximate. No details are guaranteed, they cannot be relied upon for any purpose and do not form any part of any agreement. No liability is taken for any error, omission or misstatement. A party must rely upon its own inspection(s). Powered by [www.Propertybox.io](http://www.Propertybox.io)



## Directions

## Viewings

Viewings by arrangement only. Call 01142 687777 to make an appointment.

## Council Tax Band

## EPC Rating:

Energy Efficiency Rating		
	Current	Potential
Very energy efficient - lower running costs		
(92-plus) <b>A</b>		
(81-91) <b>B</b>		
(69-80) <b>C</b>		
(55-68) <b>D</b>		
(39-54) <b>E</b>		
(21-38) <b>F</b>		
(1-20) <b>G</b>		
Not energy efficient - higher running costs		
<b>England &amp; Wales</b>	EU Directive 2002/91/EC	