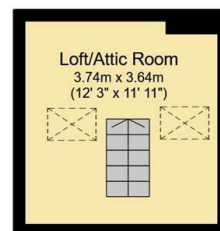
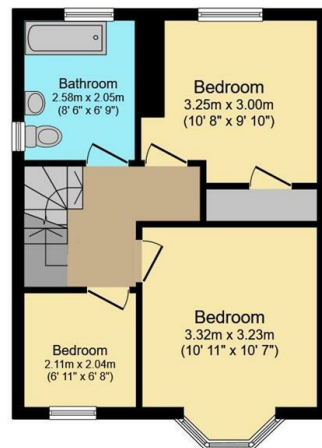
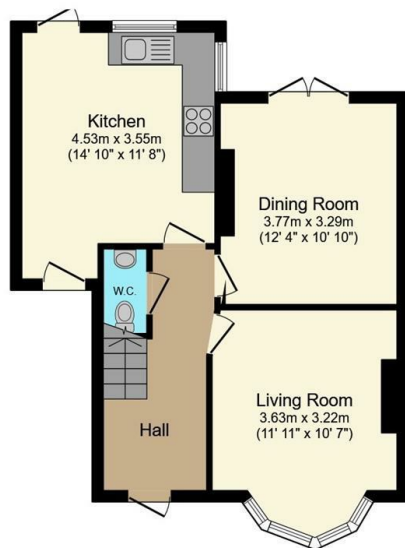




40 Lydgate Hall Crescent, Crosspool, Sheffield, S10 5NE

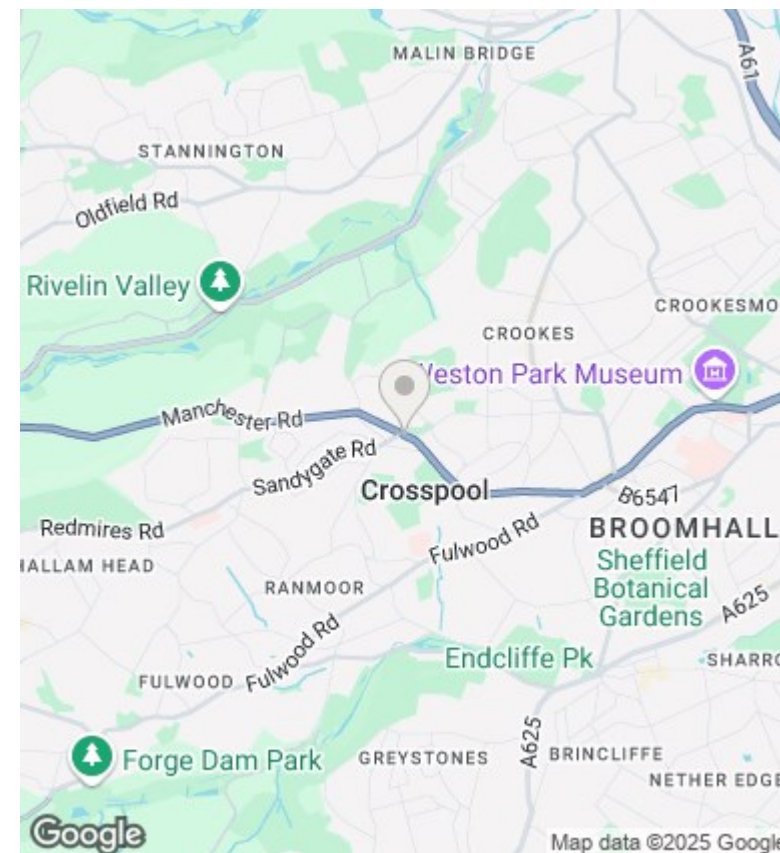
Offers Over £375,000

- Extended semi-detached home
- Extended kitchen
- Beautiful west facing rear garden
- Council tax band C
- West facing rear garden
- Two double bedrooms and a single bedroom
- Short walk to highly regarded schools
- Two reception rooms
- Stunning bathroom
- Long leasehold



Total floor area: 101.7 sq.m. (1,094 sq.ft.)

This floor plan is for illustrative purposes only. It is not drawn to scale. Any measurements, floor areas (including any total floor area), openings and orientations are approximate. No details are guaranteed, they cannot be relied upon for any purpose and do not form any part of any agreement. No liability is taken for any error, omission or misstatement. A party must rely upon its own inspection(s). Powered by www.Propertybox.io



Directions

Viewings

Viewings by arrangement only. Call 01142 687777 to make an appointment.

Council Tax Band

EPC Rating:

Energy Efficiency Rating		
	Current	Potential
Very energy efficient - lower running costs		
(92 plus) A		
(81-91) B		
(69-80) C		
(55-68) D		
(39-54) E		
(21-38) F		
(1-20) G		
Not energy efficient - higher running costs		
England & Wales	EU Directive 2002/91/EC	