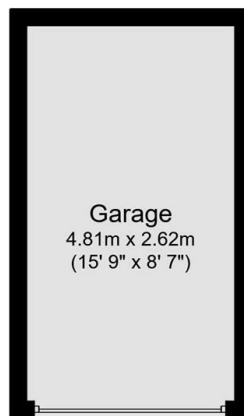
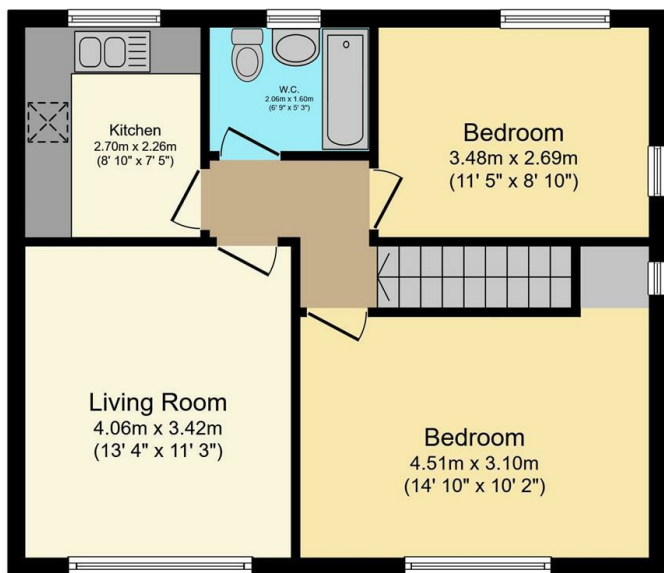




5 Ranmoor Chase Riverdale Road, Sheffield, S10 3FA

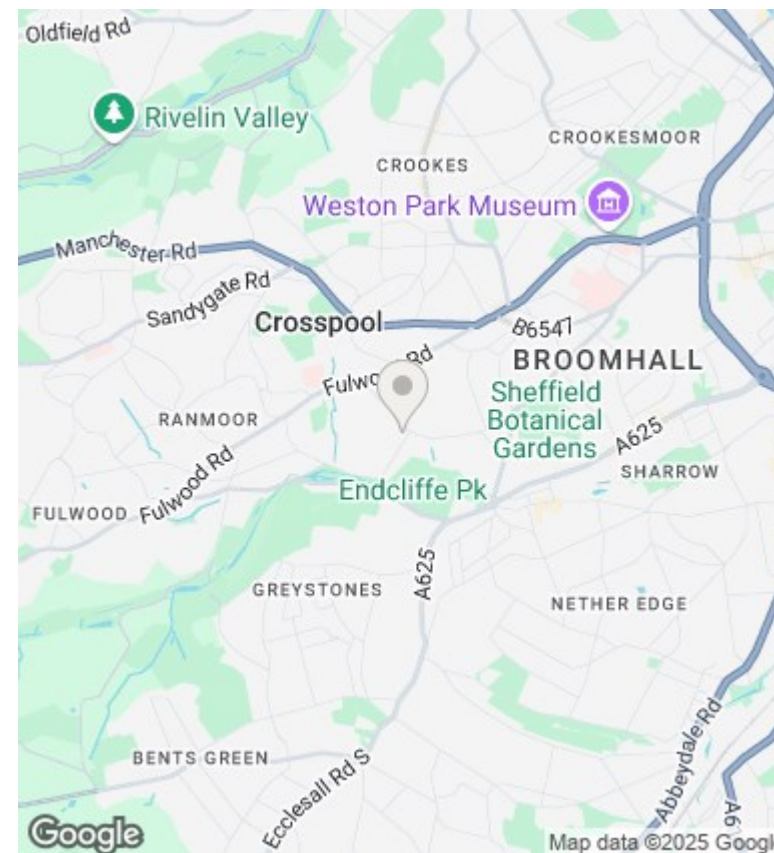
Offers Over £220,000

- No onward chain
- Modern bathroom
- Short walk to Endcliffe Park
- Council tax band B
- Off street parking and a garage
- Views of communal gardens
- Quiet location
- Beautiful kitchen
- Perfect for a first-time buyer
- Two double bedrooms



Total floor area: 67.3 sq.m. (724 sq.ft.)

This floor plan is for illustrative purposes only. It is not drawn to scale. Any measurements, floor areas (including any total floor area), openings and orientations are approximate. No details are guaranteed, they cannot be relied upon for any purpose and do not form any part of any agreement. No liability is taken for any error, omission or misstatement. A party must rely upon its own inspection(s). Powered by www.Propertybox.io



Directions

Viewings

Viewings by arrangement only. Call 01142 687777 to make an appointment.

Council Tax Band

C

EPC Rating:

D

Energy Efficiency Rating		
	Current	Potential
Very energy efficient - lower running costs		
(92 plus) A		
(81-91) B		80
(69-80) C		
(55-68) D	62	
(39-54) E		
(21-38) F		
(1-20) G		
Not energy efficient - higher running costs		
England & Wales	EU Directive 2002/91/EC	