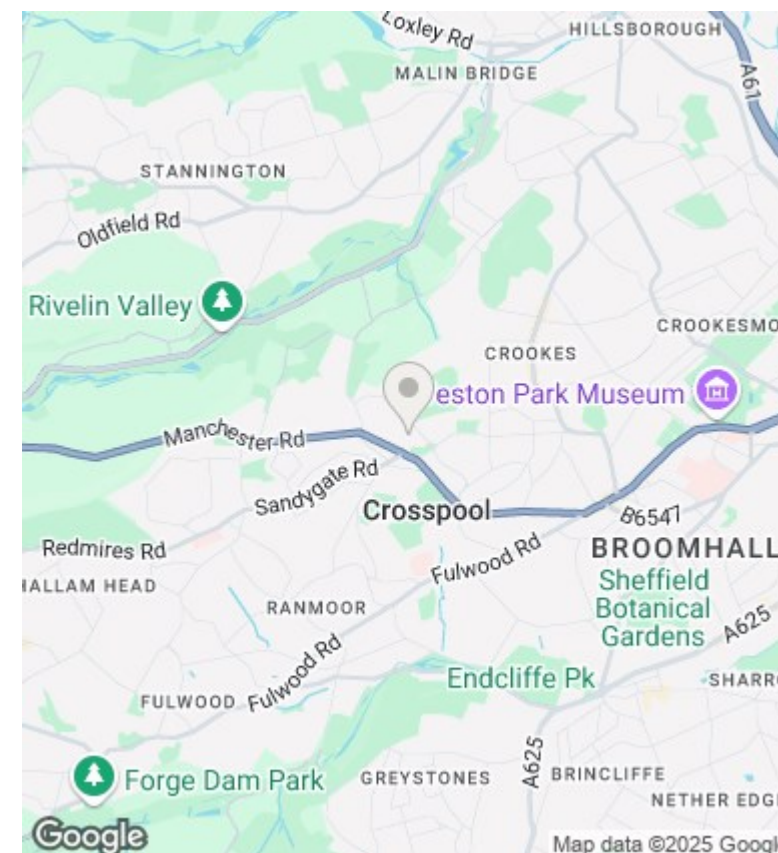




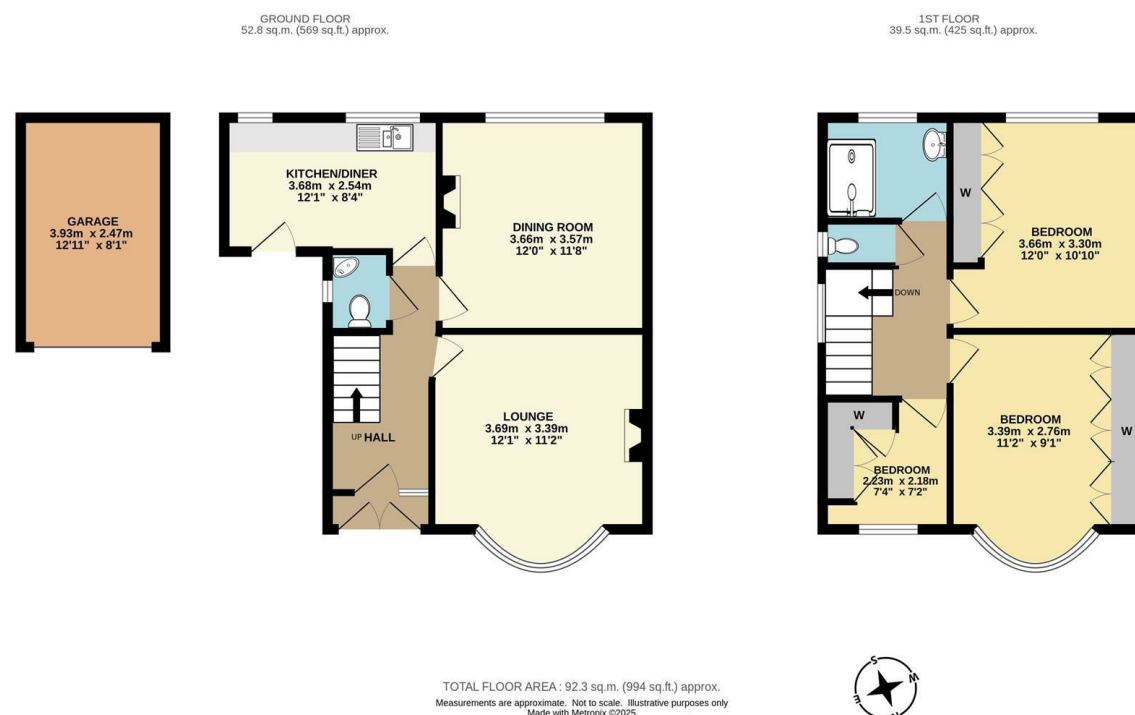
20 Lydgate Hall Crescent, Crosspool, Sheffield, S10 5NE

Offers Over £325,000

- No onward chain
- Requires modernisation
- South facing rear garden
- Easy access to the city centre, Sheffield University and central hospitals
- Semi-detached home
- Fantastic potential
- Detached garage to the side
- Quiet location
- Two double bedrooms and a single bedroom/home office/nursery
- Short walk to local shops, cafes and pubs



Energy Efficiency Rating		
	Current	Potential
Very energy efficient - lower running costs		
(92 plus) A		
(81-91) B		82
(69-80) C		
(55-68) D	61	
(39-54) E		
(21-38) F		
(1-20) G		
Not energy efficient - higher running costs		
England & Wales	EU Directive 2002/91/EC	



Directions

11-13 Sandgate Road, Sheffield, South Yorkshire, S10 5NG
01142 687777

Viewings

Viewings by arrangement only. Call 01142 687777 to make an appointment.

Council Tax Band

B

EPC Rating:

D

info@cockerandcarr.co.uk
www.cockerandcarr.co.uk