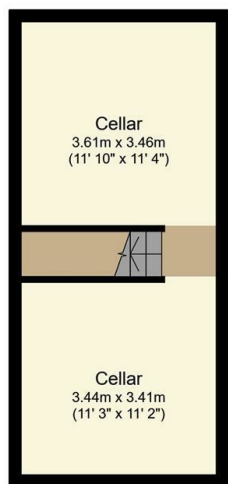




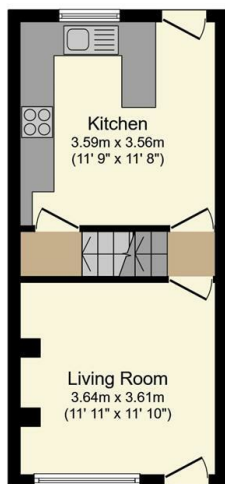
154 Cross Lane, Crookes, Sheffield, S10 1WP

Offers Over £300,000

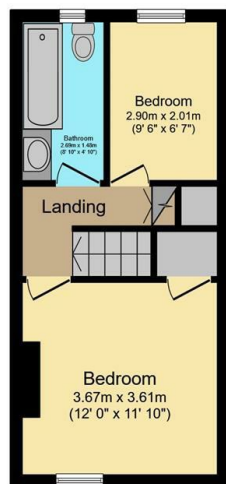
- Stunning mid-terrace
- Cosy living room with wood burner
- Rear garden perfect for BBQs and entertaining
- Close to local parks
- Principal bedroom with en suite
- Beautiful dining kitchen
- Short walk to shops, cafes and pubs
- Juliet balcony and stunning views
- Large cellar for storage
- Walking distance to the city centre, central hospitals and Sheff Uni



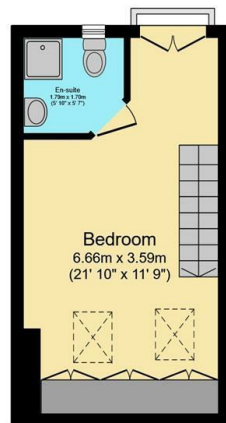
Lower Ground Floor
Floor area 27.7 sq.m. (298 sq.ft.)



Ground Floor
Floor area 27.7 sq.m. (298 sq.ft.)



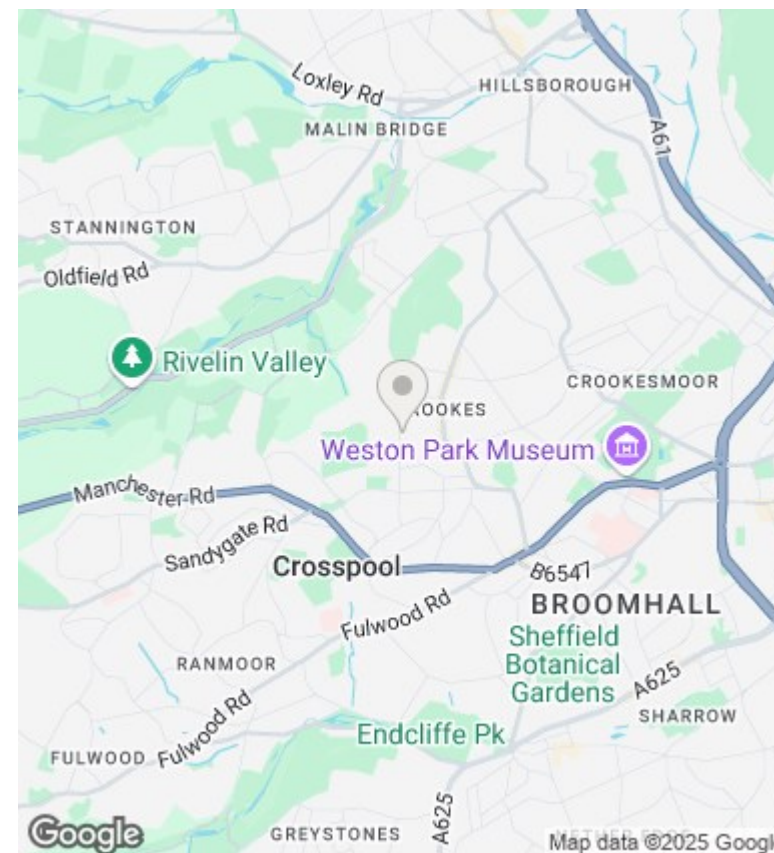
First Floor
Floor area 27.7 sq.m. (298 sq.ft.)



Second Floor
Floor area 23.0 sq.m. (247 sq.ft.)

Total floor area: 106.0 sq.m. (1,141 sq.ft.)

This floor plan is for illustrative purposes only. It is not drawn to scale. Any measurements, floor areas (including any total floor area), openings and orientations are approximate. No details are guaranteed, they cannot be relied upon for any purpose and do not form any part of any agreement. No liability is taken for any error, omission or misstatement. A party must rely upon its own inspection(s). Powered by www.Propertybox.io



Directions

Viewings

Viewings by arrangement only. Call 01142 687777 to make an appointment.

Council Tax Band

B

EPC Rating:

D

Energy Efficiency Rating		
	Current	Potential
Very energy efficient - lower running costs		
(92 plus) A		88
(81-91) B		
(69-80) C	68	
(55-68) D		
(39-54) E		
(21-38) F		
(1-20) G		
Not energy efficient - higher running costs		
England & Wales		EU Directive 2002/91/EC