



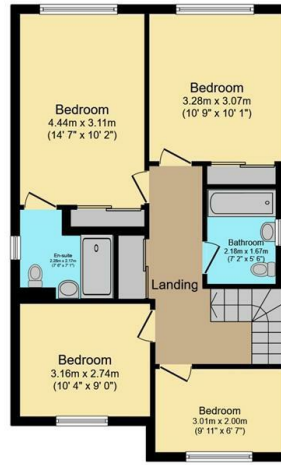
28 Chapman Close, Stannington, Sheffield, S6 5BX

Offers Over £475,000

- Spacious detached family home
- Large living room with bifolding doors
- Principal bedroom with en suite
- Freehold
- Off street parking and a garage
- Good size rear garden
- Modern family bathroom
- Stunning open plan kitchen/dining room with bifolding doors
- Four bedrooms
- Quiet cul-de-sac



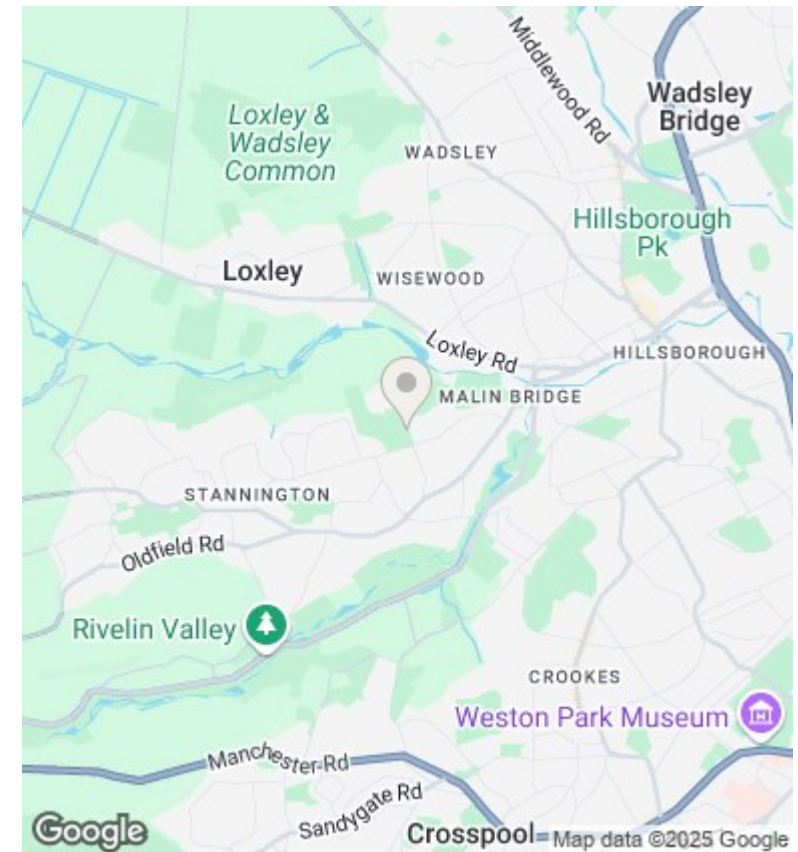
Ground Floor
Floor area 98.1 m² (1,056 sq.ft.)



First Floor
Floor area 64.4 m² (694 sq.ft.)

TOTAL: 162.6 m² (1,750 sq.ft.)

This floor plan is for illustrative purposes only. It is not drawn to scale. Any measurements, floor areas (including any total floor area), openings and orientations are approximate. No details are guaranteed, they cannot be relied upon for any purpose and do not form any part of any agreement. No liability is taken for any error, omission or misstatement. A party must rely upon its own inspection(s). Powered by www.Propertybox.io



Directions

Viewings

Viewings by arrangement only. Call 01142 687777 to make an appointment.

Council Tax Band

A

EPC Rating:

A

Energy Efficiency Rating		
	Current	Potential
Very energy efficient - lower running costs		
(92 plus) A	93	95
(81-91) B		
(69-80) C		
(55-68) D		
(39-54) E		
(21-38) F		
(1-20) G		
Not energy efficient - higher running costs		
England & Wales	EU Directive 2002/91/EC	