



541 Fulwood Road, Fulwood, Sheffield, S10 3QG

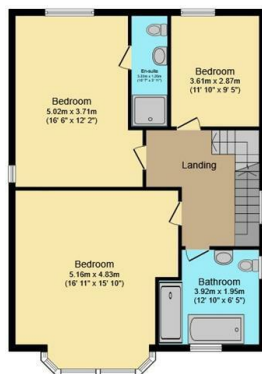
Asking Price £975,000

- Stunning detached family home
- Beautiful open plan kitchen/diner
- South facing rear garden
- Short walk to Fulwood Village and Nether Green
- Over 3,000ft² of floor space
- Five double bedrooms
- Utility room and downstairs WC
- Two large reception rooms
- Three bathrooms
- Off street parking and a garage



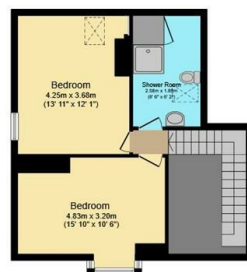
Ground Floor

Floor area 155.6 sq.m. (1,675 sq.ft.)



First Floor

Floor area 89.1 sq.m. (959 sq.ft.)

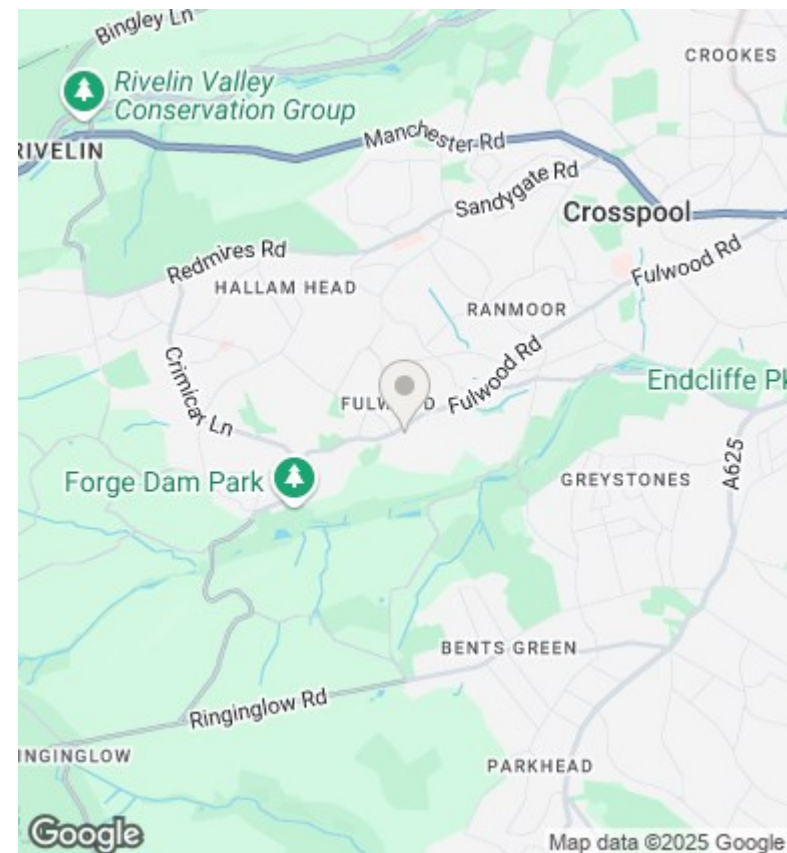


Second Floor

Floor area 53.8 sq.m. (579 sq.ft.)

TOTAL: 298.5 sq.m. (3,213 sq.ft.)

This floor plan is for illustrative purposes only. It is not drawn to scale. Any measurements, floor areas (including any total floor area), openings and orientations are approximate. No details are guaranteed, they cannot be relied upon for any purpose and do not form any part of any agreement. No liability is taken for any error, omission or misstatement. A party must rely upon its own inspection(s). Powered by www.Propertybox.io



Directions

Viewings

Viewings by arrangement only. Call 01142 687777 to make an appointment.

Council Tax Band

C

EPC Rating:

E

Energy Efficiency Rating		
	Current	Potential
Very energy efficient - lower running costs		
(92-plus) A		
(81-91) B		75
(69-80) C		
(55-68) D	54	
(39-54) E		
(21-38) F		
(1-20) G		
Not energy efficient - higher running costs		
England & Wales	EU Directive 2002/91/EC	