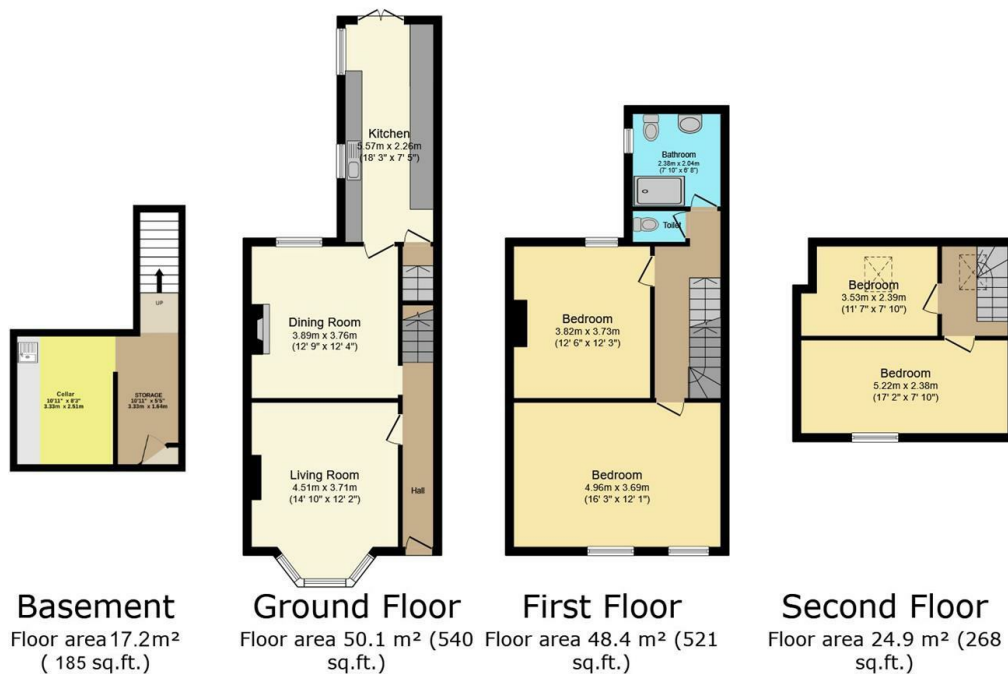




83 Dorothy Road, Sheffield, S6 4FQ

Offers Over £300,000

- Four bedrooms
- Private south facing rear garden
- Close to local shops and cafes
- Two reception rooms
- Quiet location
- Supertram and bus stops around the corner
- Beautiful kitchen
- Short walk to Hillsborough Park
- Long leasehold



Directions

Viewings

Viewings by arrangement only. Call 01142 687777 to make an appointment.

Council Tax Band

C

EPC Rating:

E

Energy Efficiency Rating		
	Current	Potential
Very energy efficient - lower running costs		
(92-plus) A		
(81-91) B		77
(69-80) C		
(55-68) D	51	
(39-54) E		
(21-38) F		
(1-20) G		
Not energy efficient - higher running costs		
England & Wales	EU Directive 2002/91/EC	