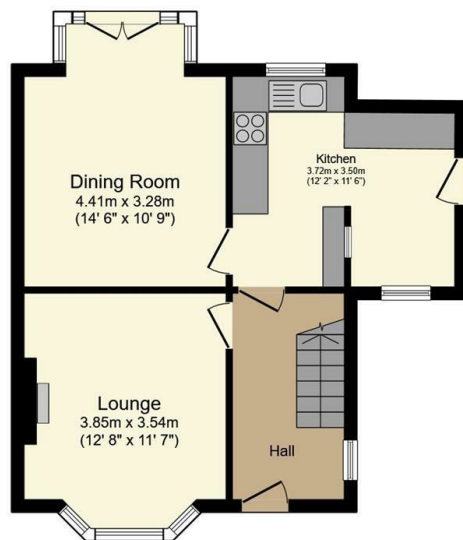




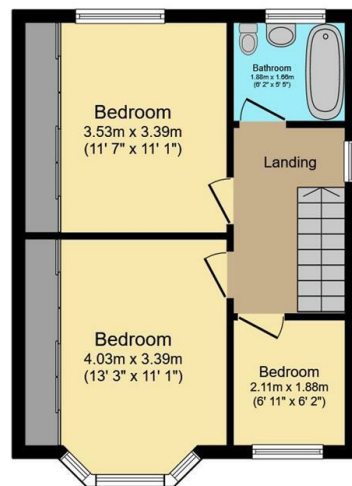
19 Hollins Lane, Rivelin, Sheffield, S6 5GQ

Asking Price £270,000

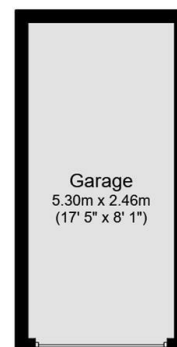
- No onward chain
- Off street parking and a garage
- Short walk to Rivelin Valley Park
- Long leasehold
- Semi-detached
- Corner plot
- Close to Stannington, Hillsborough and Crosspool
- Modern kitchen
- Two double bedrooms and one single bedroom
- Council tax band C



Ground Floor



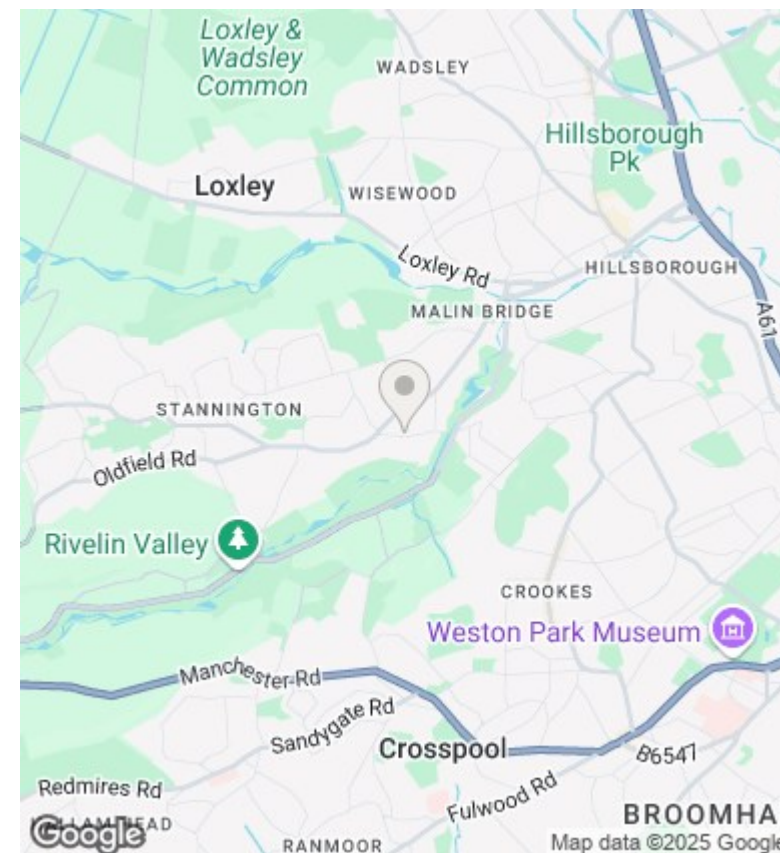
First Floor



Garage

Total floor area 98.1 m² (1,056 sq.ft.) approx

This plan is for illustration purposes only and may not be representative of the property. Plan not to scale. Powered by PropertyBox



Directions

Viewings

Viewings by arrangement only. Call 01142 687777 to make an appointment.

Council Tax Band

C

EPC Rating:

D

Energy Efficiency Rating		
	Current	Potential
Very energy efficient - lower running costs		
(92 plus) A		
(81-91) B		80
(69-80) C		
(55-68) D	57	
(39-54) E		
(21-38) F		
(1-20) G		
Not energy efficient - higher running costs		
England & Wales	EU Directive 2002/91/EC	