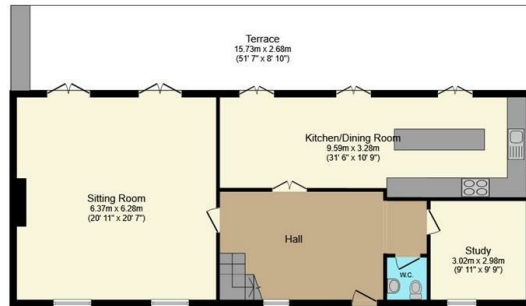




33 King Edwards, Rivelin, Sheffield, S6 5SQ

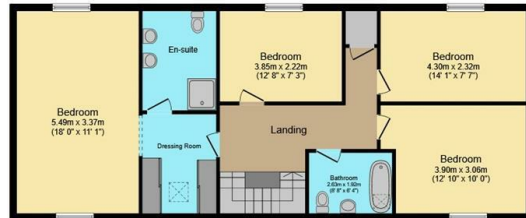
Offers Over £750,000

- No onward chain
- Spacious living room with limestone fire place
- Four bedrooms
- Private development with on site gym & tennis court
- Stunning unique home
- Luxurious home office
- Principal bedroom with dressing area and modern en-suite
- Andrew Ryan kitchen
- Fabulous covered outdoor eating/entertaining area
- Three allocated parking space



Ground Floor

Floor area 102.1 sq.m. (1,098 sq.ft.)

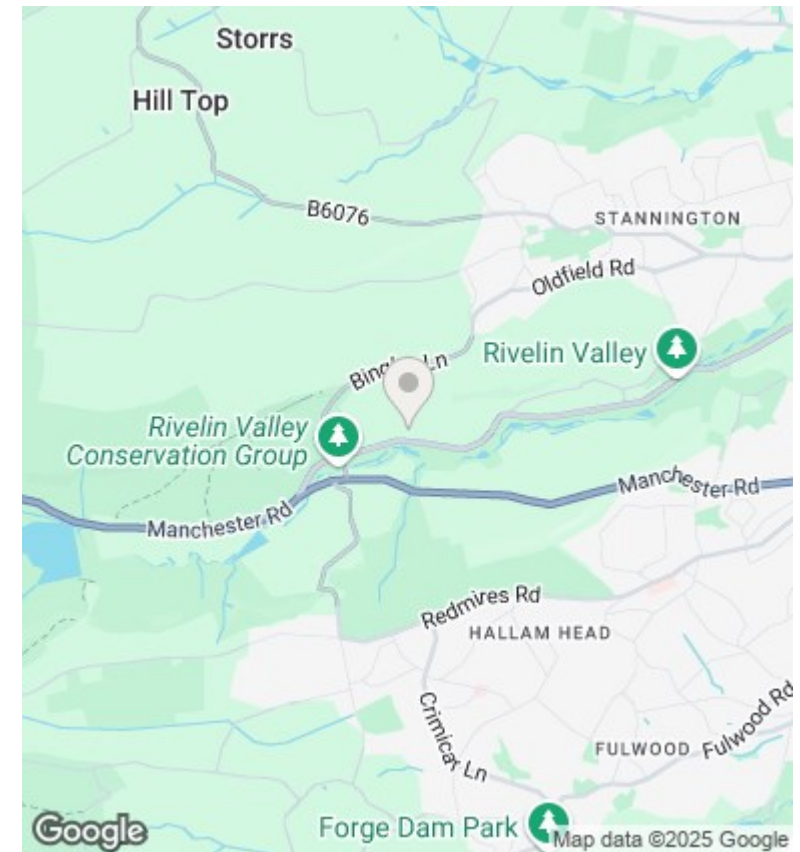


First Floor

Floor area 102.0 sq.m. (1,098 sq.ft.)

TOTAL: 204.1 sq.m. (2,197 sq.ft.)

This floor plan is for illustrative purposes only. It is not drawn to scale. Any measurements, floor areas (including any total floor area), openings and orientations are approximate. No details are guaranteed, they cannot be relied upon for any purpose and do not form any part of any agreement. No liability is taken for any error, omission or misstatement. A party must rely upon its own inspection(s). Powered by www.Propertybox.io



Directions

Viewings

Viewings by arrangement only. Call 01142 687777 to make an appointment.

Council Tax Band

EPC Rating:

Energy Efficiency Rating		
	Current	Potential
Very energy efficient - lower running costs		
(92 plus) A		
(81-91) B		
(69-80) C		
(55-68) D		
(39-54) E		
(21-38) F		
(1-20) G		
Not energy efficient - higher running costs		
England & Wales	EU Directive 2002/91/EC	