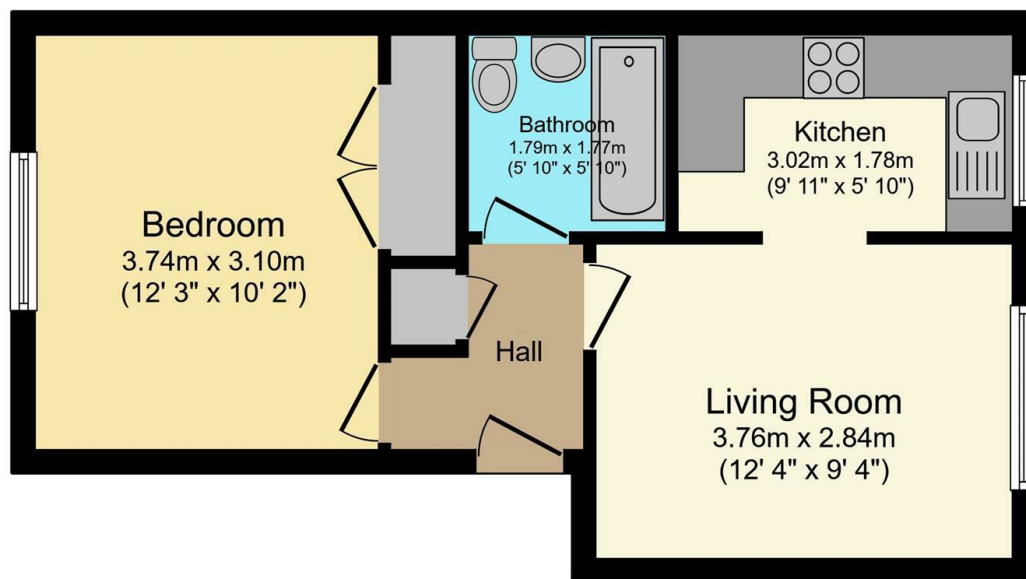




## Flat 12 Lucknow Court, 9 Glen Road, Sheffield, S7 1RA

Offers Over £115,000

- No onward chain
- Modern bathroom
- Off street parking
- Council tax band A
- Second floor apartment
- Great views
- Great property for a first-time buyer
- Beautiful kitchen
- Large double bedroom
- Popular location



**Floor Plan**  
Floor area 36.6 m<sup>2</sup> (394 sq.ft.)

TOTAL: 36.6 m<sup>2</sup> (394 sq.ft.)

This floor plan is for illustrative purposes only. It is not drawn to scale. Any measurements, floor areas (including any total floor area), openings and orientations are approximate. No details are guaranteed, they cannot be relied upon for any purpose and do not form any part of any agreement. No liability is taken for any error, omission or misstatement. A party must rely upon its own inspection(s). Powered by www.Propertybox.io

## Directions

## Viewings

Viewings by arrangement only. Call 01142 687777 to make an appointment.

## Council Tax Band

B

## EPC Rating:

F



Energy Efficiency Rating		
	Current	Potential
Very energy efficient - lower running costs		
(92-plus) <b>A</b>		
(81-91) <b>B</b>		<b>81</b>
(69-80) <b>C</b>		
(55-68) <b>D</b>		
(39-54) <b>E</b>	<b>38</b>	
(21-38) <b>F</b>		
(1-20) <b>G</b>		
Not energy efficient - higher running costs		
<b>England &amp; Wales</b>	EU Directive 2002/91/EC	