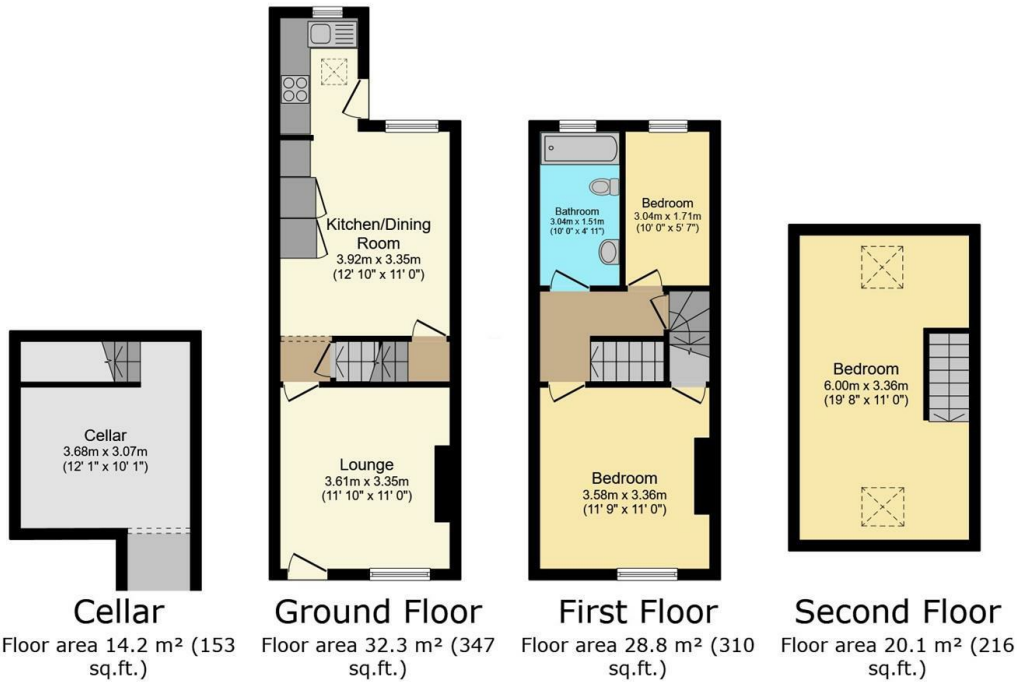




24 Beechwood Road, Hillsborough, Sheffield, S6 4LN

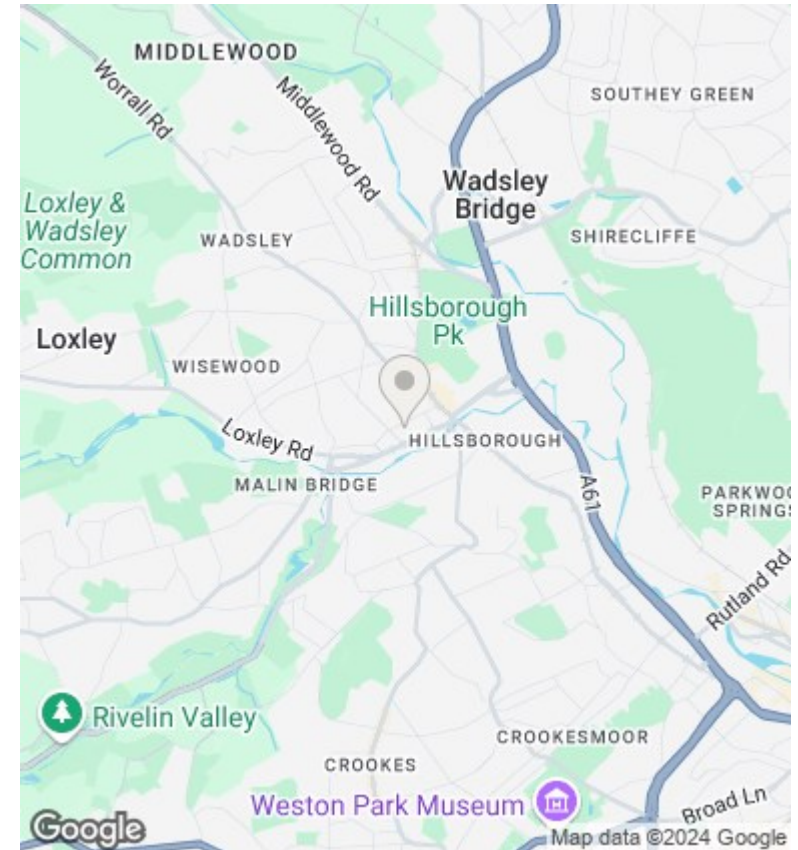
Asking Price £210,000

- No onward chain
- Two double bedrooms and one single bedroom
- Walking distance to local countryside and parks
- Freehold
- Open kitchen/dining room
- Beautiful bathroom
- Short walk to shops, cafes, pubs and restaurants in Hillsborough
- Living room with multi-fuel stove
- Underfloor heating
- Supertram and bus stops nearby



TOTAL: 95.4 m² (1,027 sq.ft.)

This floor plan is for illustrative purposes only. It is not drawn to scale. Any measurements, floor areas (including any total floor area), openings and orientations are approximate. No details are guaranteed, they cannot be relied upon for any purpose and do not form any part of any agreement. No liability is taken for any error, omission or misstatement. A party must rely upon its own inspection(s). Powered by www.Propertybox.io



Directions

Viewings

Viewings by arrangement only. Call 01142 687777 to make an appointment.

Council Tax Band

C

EPC Rating:

E

Energy Efficiency Rating		Current	Potential
<i>Very energy efficient - lower running costs</i>			
(92 plus)	A		
(81-91)	B		77
(69-80)	C		
(55-68)	D		
(39-54)	E	49	
(21-38)	F		
(1-20)	G		
<i>Not energy efficient - higher running costs</i>			
England & Wales		EU Directive 2002/91/EC	