



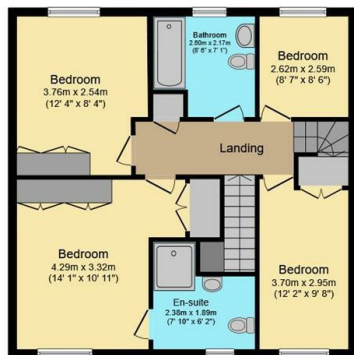
8 Kensington Court, Lodge Moor, Sheffield, S10 4NL

Asking Price £625,000

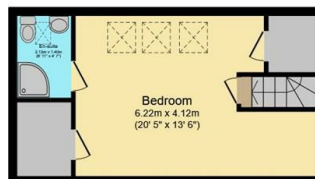
- Detached family home
- Utility room and downstairs WC
- Garage
- 2 min walk away from stunning countryside
- Five bedrooms, two bathrooms
- Good sized garden
- Great development for families with on site playground and nursery
- Two reception rooms
- Off-street parking for multiple cars
- Freehold



Ground Floor
Floor area 76.4 m² (823 sq.ft.)



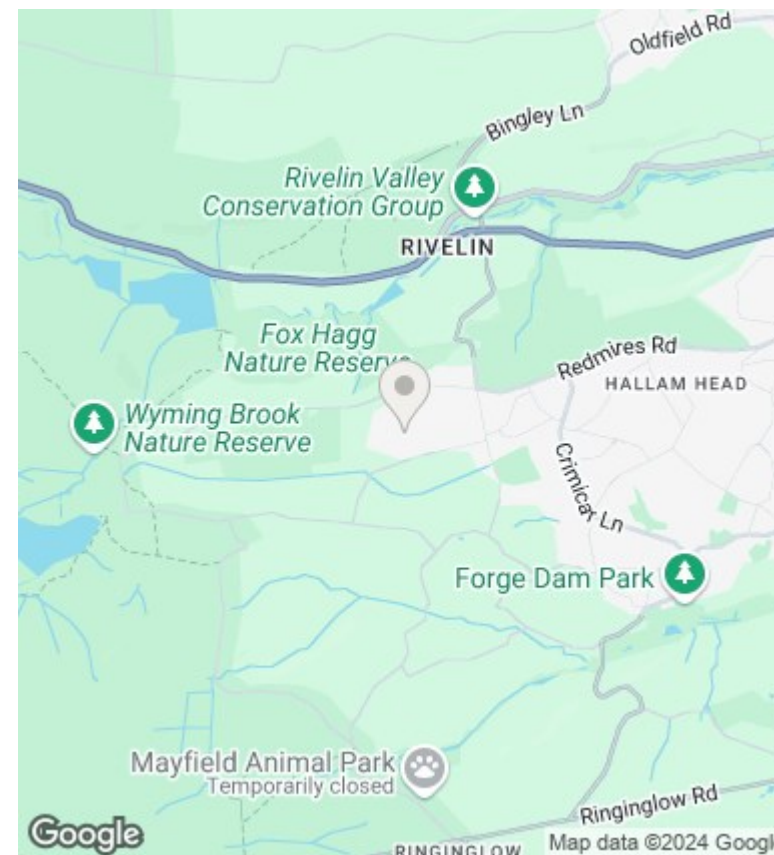
First Floor
Floor area 73.0 m² (786 sq.ft.)



Second Floor
Floor area 31.9 m² (343 sq.ft.)

TOTAL: 181.3 m² (1,951 sq.ft.)

This floor plan is for illustrative purposes only. It is not drawn to scale. Any measurements, floor areas (including any total floor area), openings and orientations are approximate. No details are guaranteed, they cannot be relied upon for any purpose and do not form any part of any agreement. No liability is taken for any error, omission or misstatement. A party must rely upon its own inspection(s). Powered by www.Propertybox.io



Directions

Viewings

Viewings by arrangement only. Call 01142 687777 to make an appointment.

Council Tax Band

B

EPC Rating:

C

Energy Efficiency Rating		Current	Potential
<i>Very energy efficient - lower running costs</i>			
(92 plus) A			
(81-91) B		75	83
(69-80) C			
(55-68) D			
(39-54) E			
(21-38) F			
(1-20) G			
<i>Not energy efficient - higher running costs</i>			
England & Wales	EU Directive 2002/91/EC		