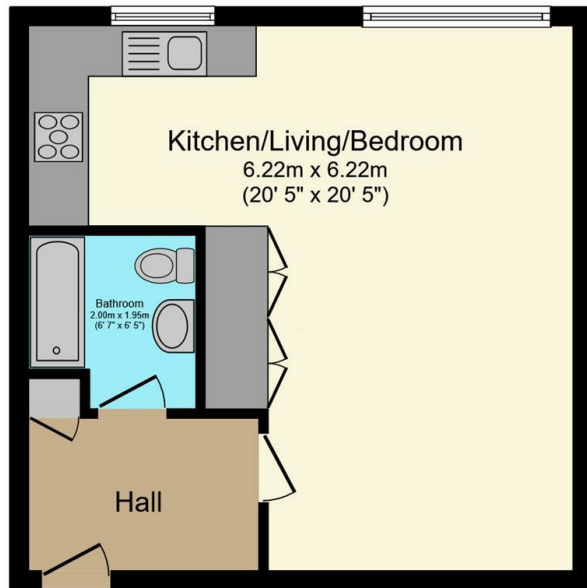




## Flat 28, 64 Hallam Chase, Endcliffe Vale Road, Sheffield, S10

Asking Price £115,000

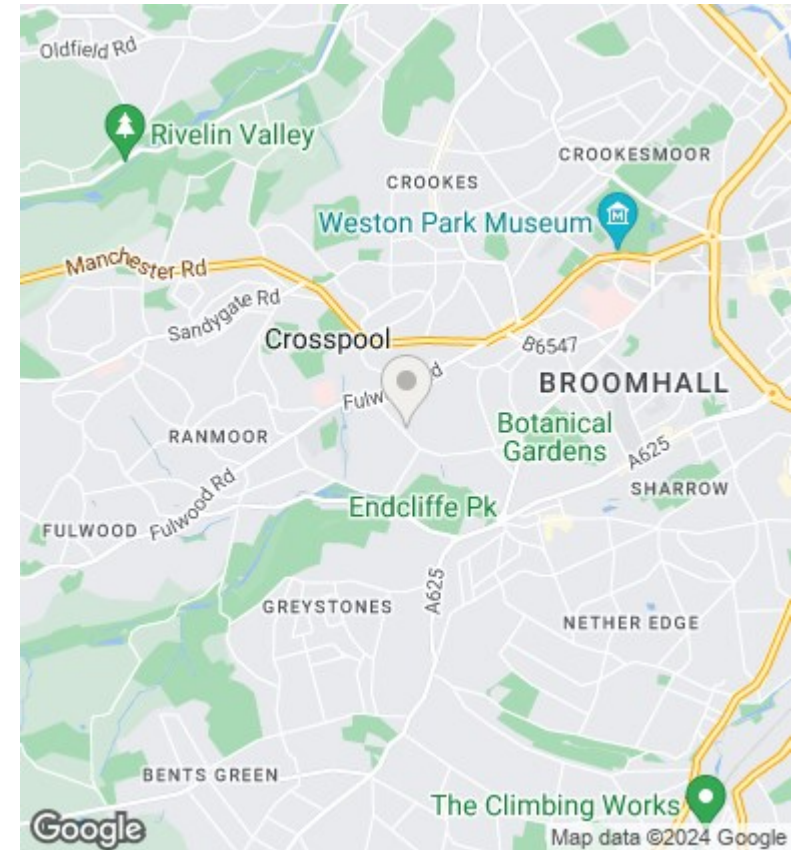
- No onward chain
- Large built-in wardrobes
- Quiet development
- Council tax band A
- Ground floor studio apartment
- Modern bathroom with shower over bath
- Great location close to Endcliffe Park, Ecclesall Road and Sharrow Vale
- Kitchen with solid wood worktops
- Off-street parking
- Walking distance to the city centre, both universities and many hospitals



**Floor Plan**  
Floor area 38.7 m<sup>2</sup> (416 sq.ft.)

TOTAL: 38.7 m<sup>2</sup> (416 sq.ft.)

This floor plan is for illustrative purposes only. It is not drawn to scale. Any measurements, floor areas (including any total floor area), openings and orientations are approximate. No details are guaranteed, they cannot be relied upon for any purpose and do not form any part of any agreement. No liability is taken for any error, omission or misstatement. A party must rely upon its own inspection(s). Powered by www.Propertybox.io



## Directions

## Viewings

Viewings by arrangement only. Call 01142 687777 to make an appointment.

## Council Tax Band

C

## EPC Rating:

C

Energy Efficiency Rating		Current	Potential
<i>Very energy efficient - lower running costs</i>			
(92 plus) <b>A</b>			
(81-91) <b>B</b>			80
(69-80) <b>C</b>		70	
(55-68) <b>D</b>			
(39-54) <b>E</b>			
(21-38) <b>F</b>			
(1-20) <b>G</b>			
<i>Not energy efficient - higher running costs</i>			
<b>England &amp; Wales</b>		EU Directive 2002/91/EC	