



95 Westminster Crescent, Lodge Moor, Sheffield, S10 4EU

£800 PCM

- Available early September 2024
- Large living room
- Excellent location
- Council tax band A
- Two bedrooms
- Separate kitchen
- Beautiful countryside within walking distance
- Study room
- Plenty of storage
- Bus route to city centre, hospitals and university

APPROXIMATE GROSS INTERNAL AREA = 61.6 SQ M / 663 SQ FT

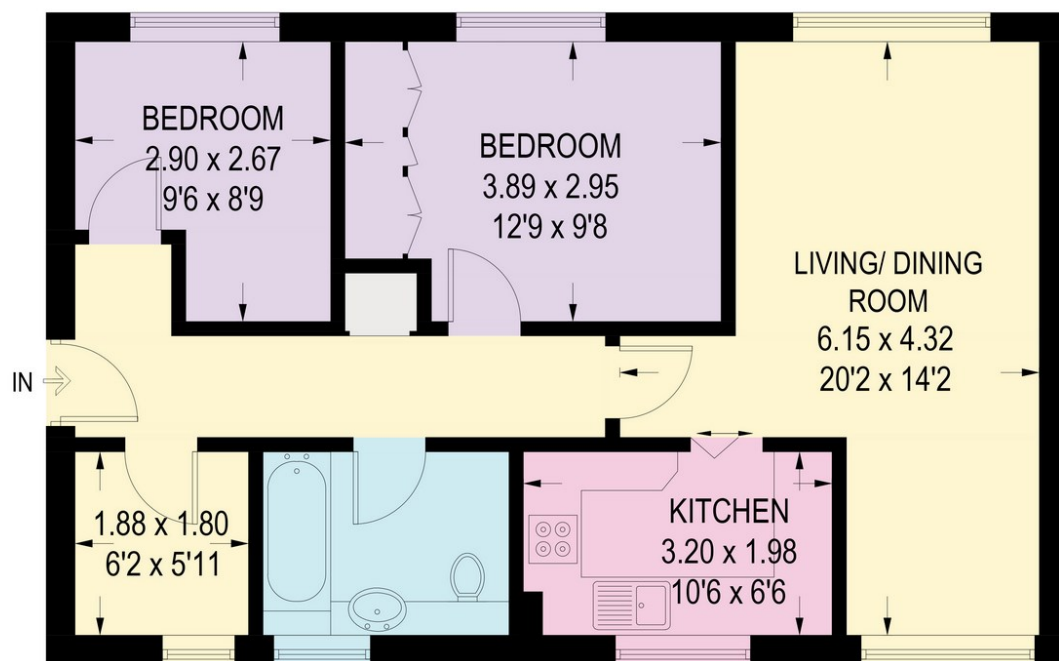
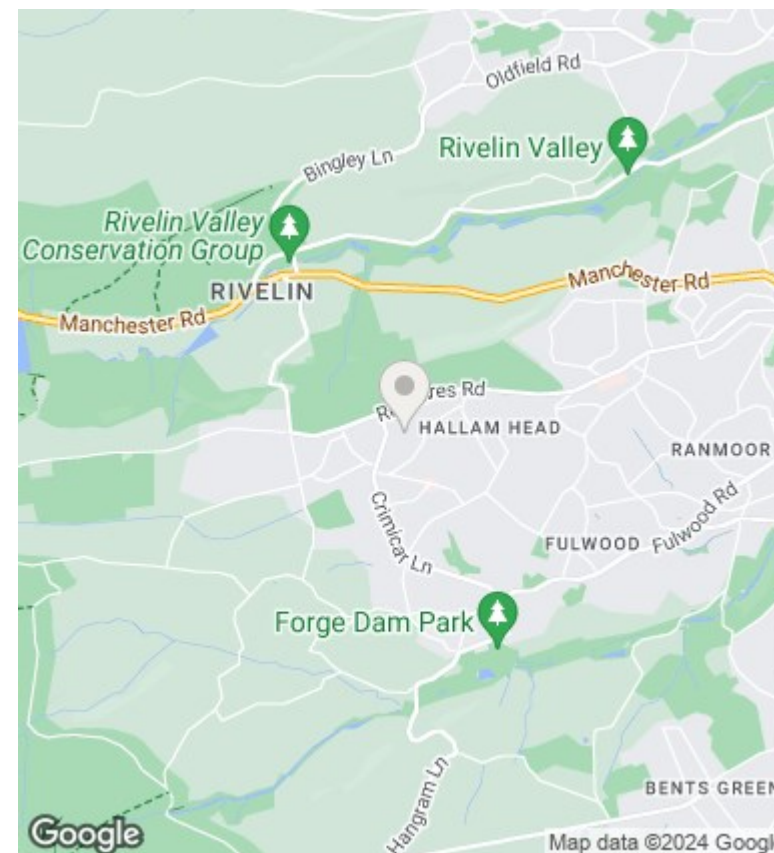


Illustration for identification purposes only, measurements are approximate, not to scale.



Directions

Viewings

Viewings by arrangement only. Call 01142 687777 to make an appointment.

Council Tax Band

C

EPC Rating:

C

Energy Efficiency Rating		Current	Potential
<i>Very energy efficient - lower running costs</i>			
(92 plus) A			
(81-91) B			
(69-80) C		74	75
(55-68) D			
(39-54) E			
(21-38) F			
(1-20) G			
<i>Not energy efficient - higher running costs</i>			
England & Wales		EU Directive 2002/91/EC	