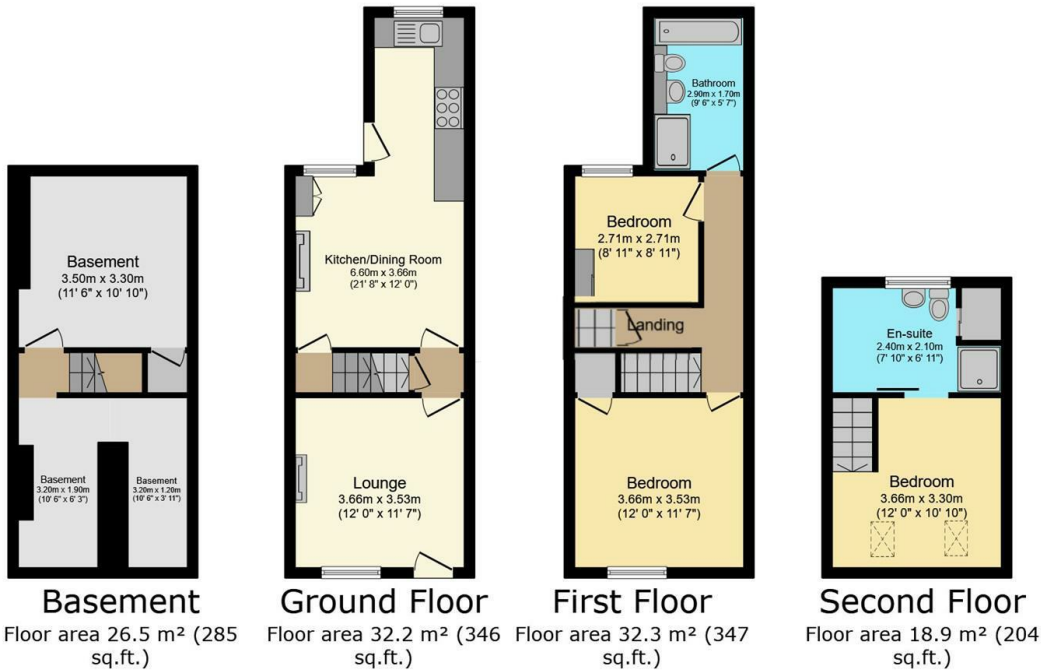




43 Portsea Road, Hillsborough, Sheffield, S6 4QA

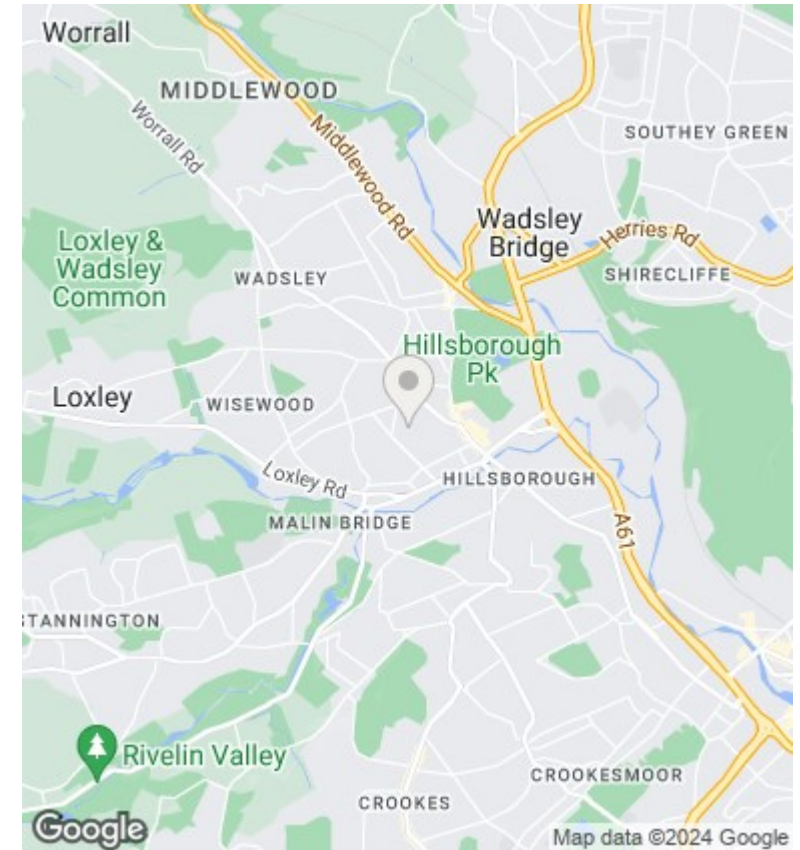
Asking Price £260,000

- NO ONWARD CHAIN
- Two beautiful bathrooms
- South-east facing rear garden
- Good public transport links to city centre and Meadowhall
- Refurbished to an incredible standard
- Incredible views
- Walking distance to Hillsborough Park
- Three double bedrooms
- Modern open plan kitchen/dining room
- Short walk to local shops, cafes and pubs



TOTAL: 109.8 m² (1,182 sq.ft.)

This floor plan is for illustrative purposes only. It is not drawn to scale. Any measurements, floor areas (including any total floor area), openings and orientations are approximate. No details are guaranteed, they cannot be relied upon for any purpose and do not form any part of any agreement. No liability is taken for any error, omission or misstatement. A party must rely upon its own inspection(s). Powered by www.Propertybox.io



Directions

Viewings

Viewings by arrangement only. Call 01142 687777 to make an appointment.

Council Tax Band

B

EPC Rating:

D

Energy Efficiency Rating		Current	Potential
<i>Very energy efficient - lower running costs</i>			
(92 plus) A			84
(81-91) B			
(69-80) C			
(55-68) D		56	
(39-54) E			
(21-38) F			
(1-20) G			
<i>Not energy efficient - higher running costs</i>			
England & Wales		EU Directive 2002/91/EC	