



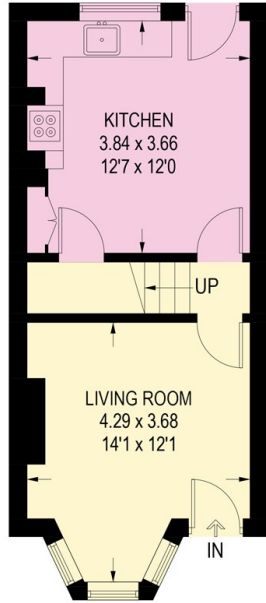
83 Bradley Street, Crookes, Sheffield, S10 1PA

Asking Price £260,000

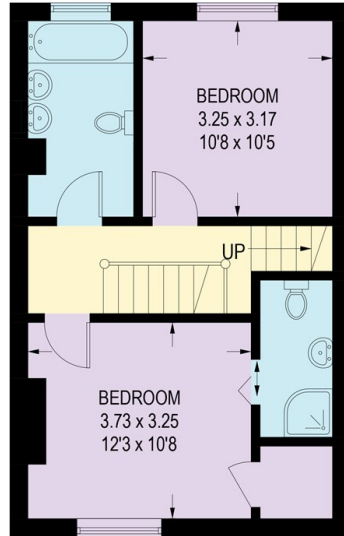
- No onward chain
- Cosy living with multi-fuel stove
- South-East facing rear garden
- Three double bedrooms
- Beautiful dining kitchen
- Quiet road
- Master bedroom with en-suite
- Modern bathroom
- Walking distance to city centre, Sheffield University and many hospitals

83 BRADLEY STREET

APPROXIMATE GROSS INTERNAL AREA = 101.5 SQ M / 1093 SQ FT



GROUND FLOOR
32.3 SQ M / 348 SQ FT

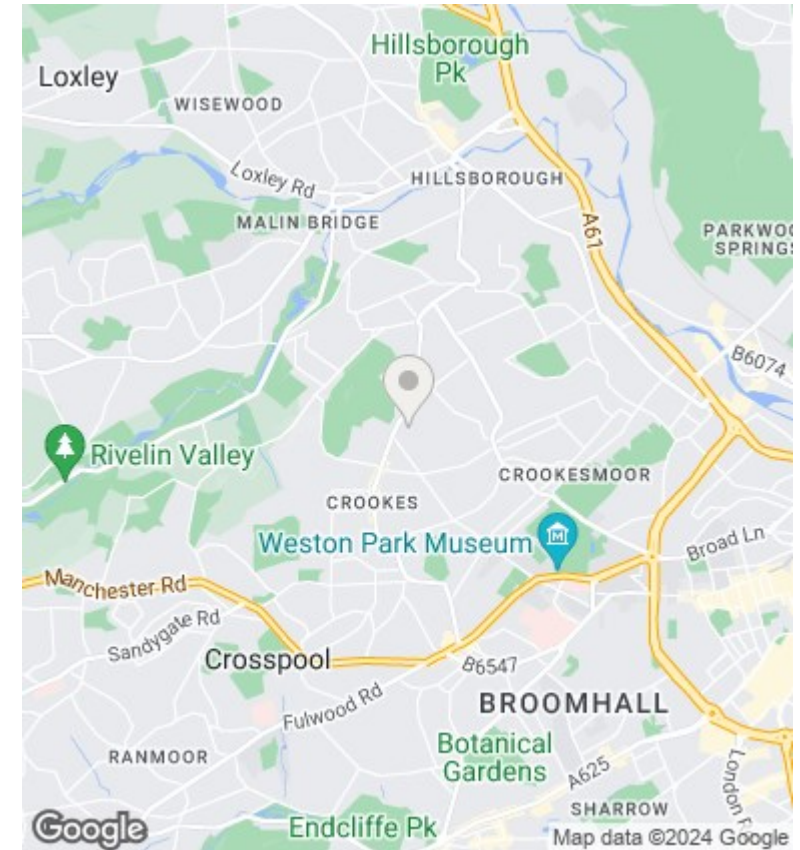


FIRST FLOOR
41.7 SQ M / 449 SQ FT



SECOND FLOOR
27.5 SQ M / 296 SQ FT

Illustration for identification purposes only, measurements are approximate, not to scale.



Directions

Viewings

Viewings by arrangement only. Call 01142 687777 to make an appointment.

Council Tax Band

B

EPC Rating:

D

Energy Efficiency Rating		Current	Potential
Very energy efficient - lower running costs			
(92 plus) A			
(81-91) B			83
(69-80) C			
(55-68) D		55	
(39-54) E			
(21-38) F			
(1-20) G			
Not energy efficient - higher running costs			
England & Wales		EU Directive 2002/91/EC	