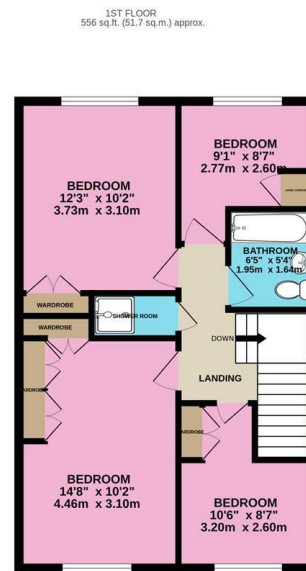
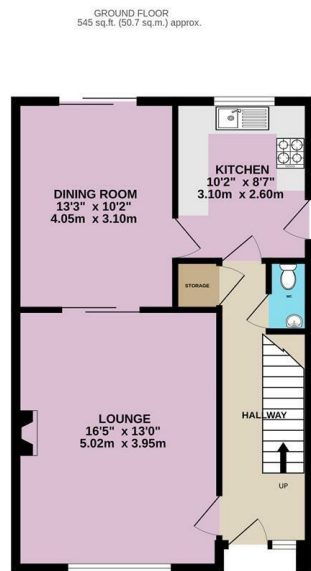
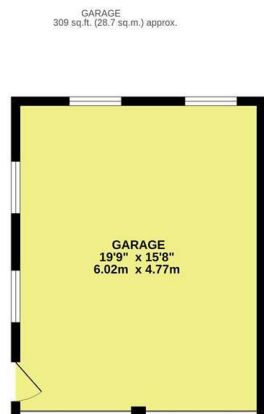




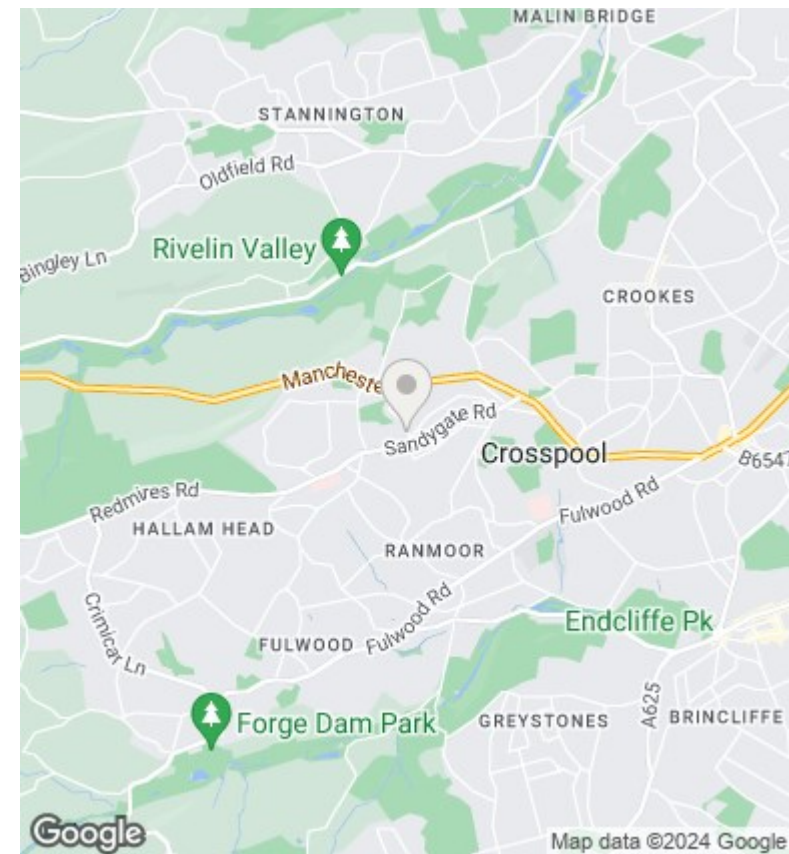
3 Ringstead Avenue, Crosspool, Sheffield, S10 5SL

Asking Price £450,000

- No onward chain
- Four bedrooms
- South-West facing rear garden
- Detached home
- Detached double garage
- Within catchment of popular schools
- Fantastic potential
- Quiet location
- Close to local playground



TOTAL FLOOR AREA: 1410 sq.ft. (131.0 sq.m.) approx.
 Whilst every attempt has been made to ensure the accuracy of the floorplan contained here, measurements of doors, windows, rooms and any other items are approximate and no responsibility is taken for any error, omission or mis-statement. This plan is for illustrative purposes only and should be used as such by any prospective purchaser. The services, systems and appliances shown have not been tested and no guarantee as to their operability or efficiency can be given.
 Made with Metropix ©2024



Directions

Double garage at the back Two doubles two singles
 Jack/Jill shower room Needs some work Double
 glazing Combi boiler Lived 40 years, Dad deceased,
 mum into a home

Viewings

Viewings by arrangement only. Call 01142
 687777 to make an appointment.

Council Tax Band

B

EPC Rating:

D

Energy Efficiency Rating		Current	Potential
Very energy efficient - lower running costs			
(92 plus) A			
(81-91) B			81
(69-80) C		67	
(55-68) D			
(39-54) E			
(21-38) F			
(1-20) G			
Not energy efficient - higher running costs			
England & Wales		EU Directive 2002/91/EC	