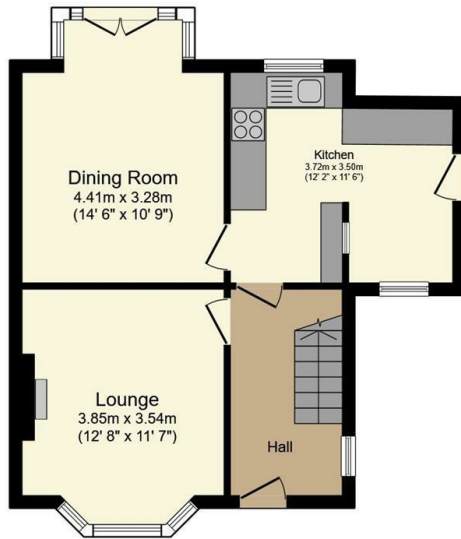




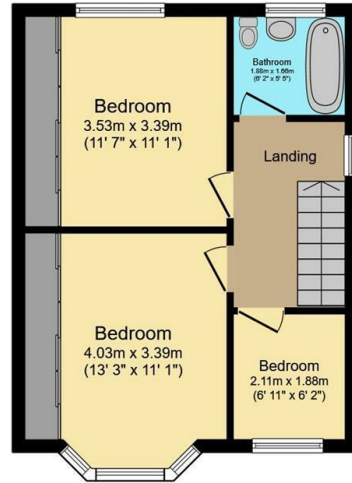
19 Hollins Lane, Rivelin, Sheffield, S6 5GQ

£270,000

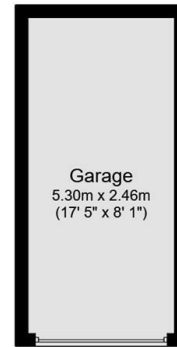
- No onward chain
- Off street parking and a garage
- Short walk to Rivelin Valley Park
- Long leasehold
- Semi-detached
- Corner plot
- Close to Stannington, Hillsborough and Crosspool
- Modern kitchen
- Two double bedrooms and one single bedroom
- Council tax band C



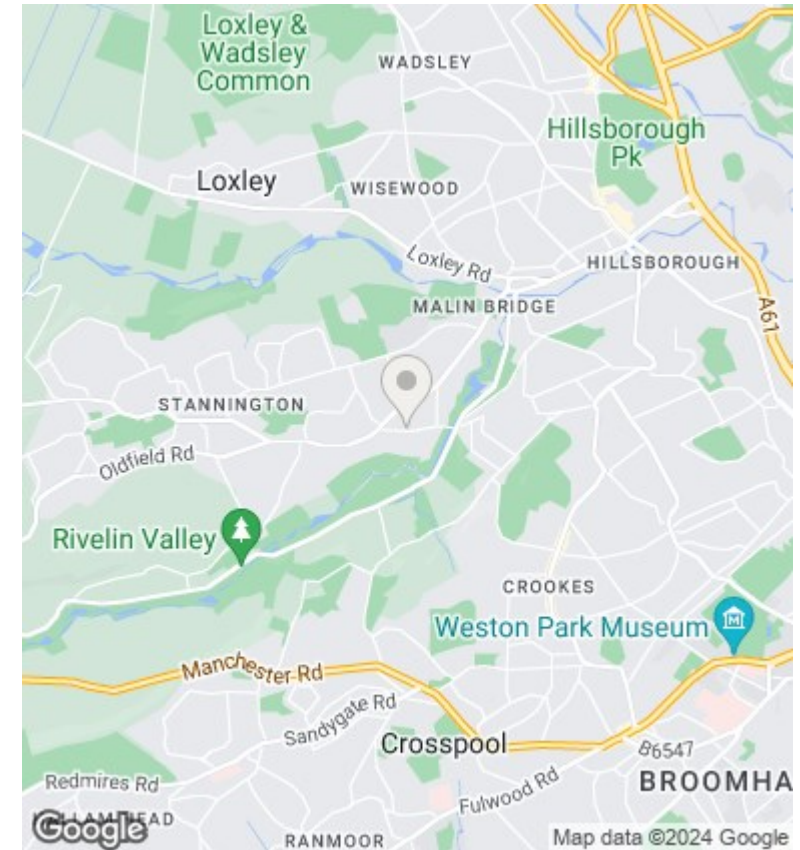
Ground Floor



First Floor



Garage



Total floor area 98.1 m² (1,056 sq.ft.) approx

This plan is for illustration purposes only and may not be representative of the property. Plan not to scale. Powered by PropertyBox

Directions

Viewings

Viewings by arrangement only. Call 01142 687777 to make an appointment.

Council Tax Band

EPC Rating:

Energy Efficiency Rating		
	Current	Potential
<i>Very energy efficient - lower running costs</i>		
(92 plus) A		
(81-91) B		
(69-80) C		
(55-68) D		
(39-54) E		
(21-38) F		
(1-20) G		
<i>Not energy efficient - higher running costs</i>		
England & Wales	EU Directive 2002/91/EC	