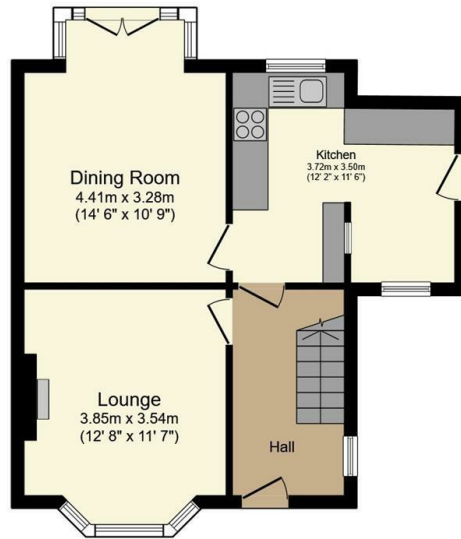




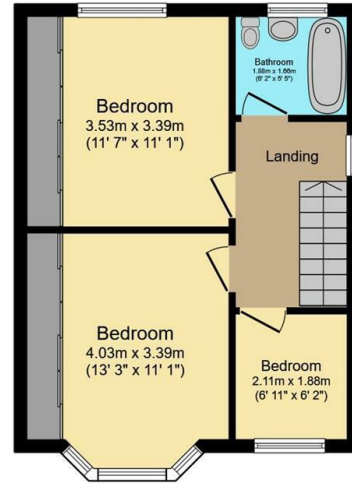
## 19 Hollins Lane, Rivelin, Sheffield, S6 5GQ

£270,000

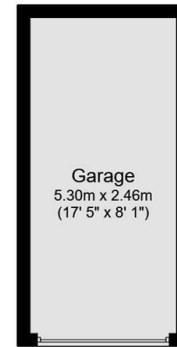
- No onward chain
- Off street parking and a garage
- Short walk to Rivelin Valley Park
- Long leasehold
- Semi-detached
- Corner plot
- Close to Stannington, Hillsborough and Crosspool
- Modern kitchen
- Two double bedrooms and one single bedroom
- Council tax band C



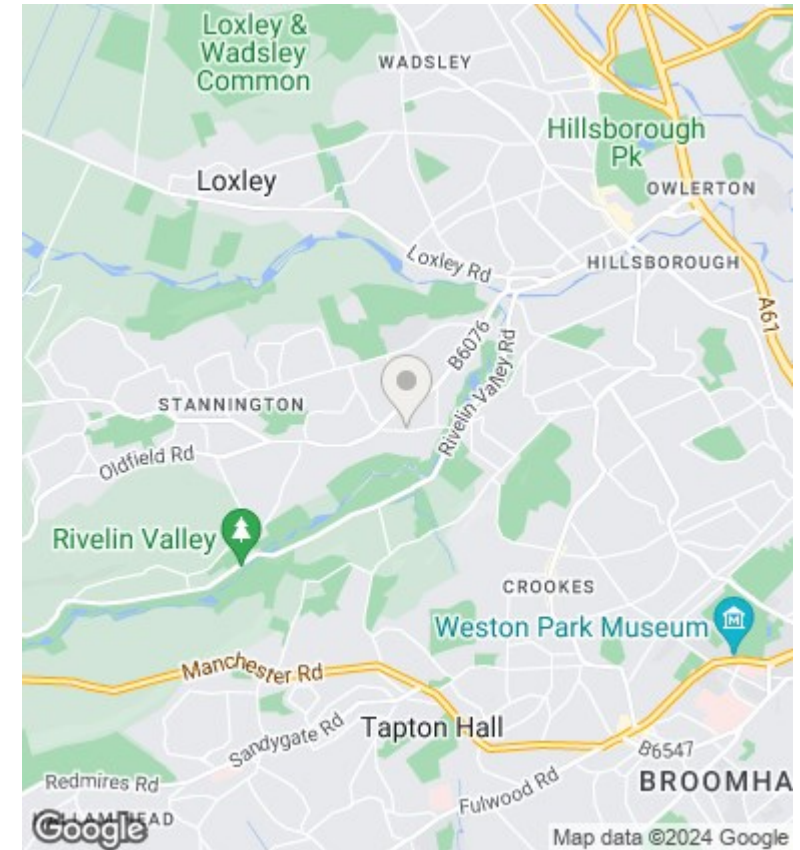
**Ground Floor**



**First Floor**



**Garage**



Total floor area 98.1 m<sup>2</sup> (1,056 sq.ft.) approx

This plan is for illustration purposes only and may not be representative of the property. Plan not to scale. Powered by PropertyBox

## Directions

## Viewings

Viewings by arrangement only. Call 01142 687777 to make an appointment.

## Council Tax Band

## EPC Rating:

Energy Efficiency Rating		
	Current	Potential
<i>Very energy efficient - lower running costs</i>		
(92 plus) <b>A</b>		
(81-91) <b>B</b>		
(69-80) <b>C</b>		
(55-68) <b>D</b>		
(39-54) <b>E</b>		
(21-38) <b>F</b>		
(1-20) <b>G</b>		
<i>Not energy efficient - higher running costs</i>		
<b>England &amp; Wales</b>	EU Directive 2002/91/EC	