

3 Worcester Drive, Lodge Moor, Sheffield, S10 4JG

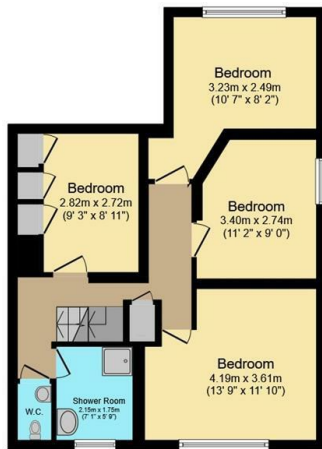
Asking Price £400,000

- Semi-detached home
- Plenty of downstairs space that can be tailored easily
- Garage with electric roller shutter door
- Four double bedrooms
- Modern shower room with walk-in shower
- South-West facing rear garden
- Modern kitchen with integrated appliances
- Off street parking for multiple cars



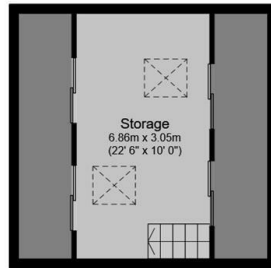
Ground Floor

Floor area 76.5 m² (824 sq.ft.) approx



First Floor

Floor area 56.6 m² (609 sq.ft.) approx

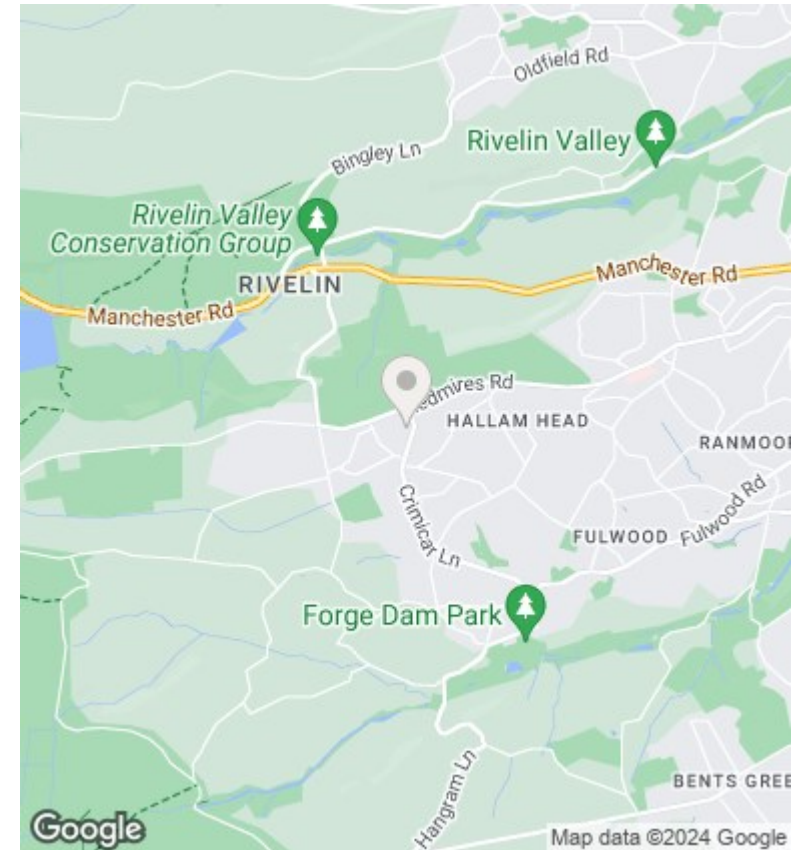


Second Floor

Floor area 17.6 m² (190 sq.ft.) approx

Total floor area 150.8 m² (1,623 sq.ft.) approx

This plan is for illustration purposes only and may not be representative of the property. Plan not to scale. Powered by PropertyBox



Directions

Viewings

Viewings by arrangement only. Call 01142 687777 to make an appointment.

Council Tax Band

C

EPC Rating:

D

Energy Efficiency Rating		
	Current	Potential
Very energy efficient - lower running costs		
(92 plus) A		
(81-91) B		78
(69-80) C		
(55-68) D	56	
(39-54) E		
(21-38) F		
(1-20) G		
Not energy efficient - higher running costs		
England & Wales	EU Directive 2002/91/EC	