



148 Tom Lane, Fulwood, Sheffield, S10 3PF

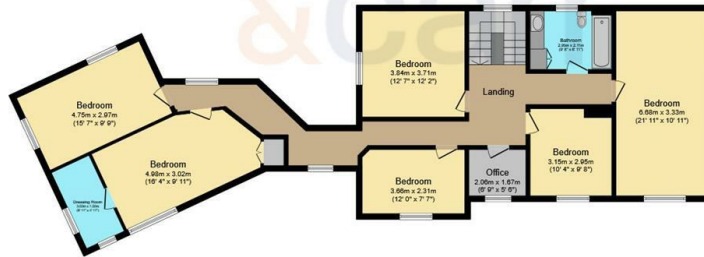
Asking Price £800,000

- No onward chain
- Off street parking for multiple cars
- Fantastic opportunity to create your dream home
- Nearly 2,900ft of floor space
- Double garage
- Freehold
- Detached
- Spacious gardens
- Incredibly popular suburb



Ground Floor

Floor area 138.2 sq.m. (1,488 sq.ft.) approx

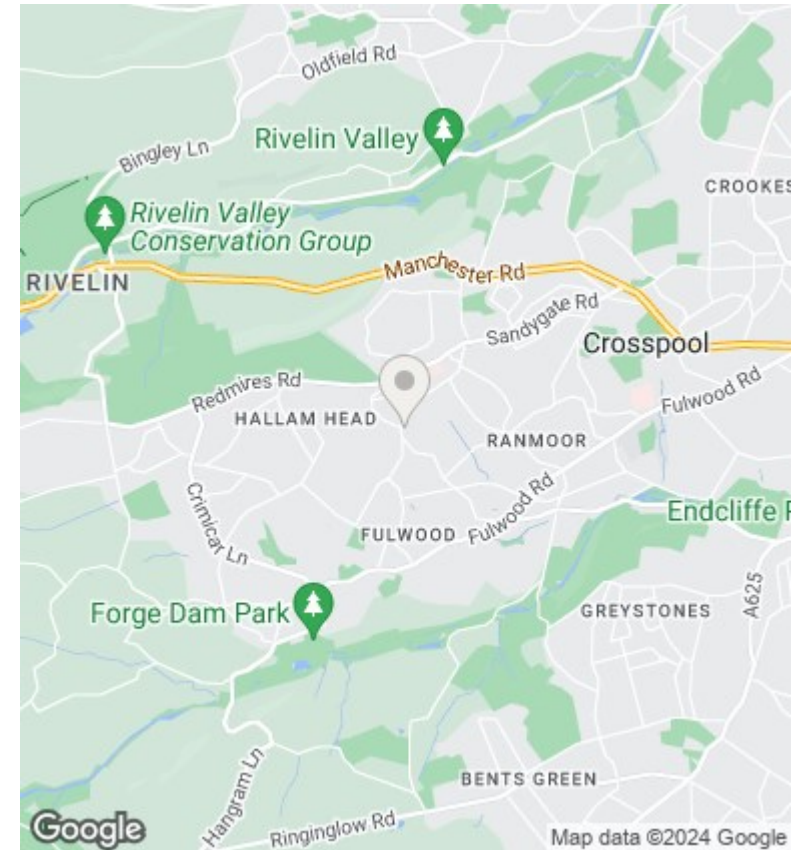


First Floor

Floor area 130.7 sq.m. (1,407 sq.ft.) approx

Total floor area 269.0 sq.m. (2,895 sq.ft.) approx

This plan is for illustration purposes only and may not be representative of the property. Plan not to scale. Powered by PropertyBox



Directions

Viewings

Viewings by arrangement only. Call 01142 687777 to make an appointment.

Council Tax Band

C

EPC Rating:

E

Energy Efficiency Rating		Current	Potential
Very energy efficient - lower running costs			
(92 plus)	A		
(81-91)	B		
(69-80)	C		72
(55-68)	D	47	
(39-54)	E		
(21-38)	F		
(1-20)	G		
Not energy efficient - higher running costs			
England & Wales		EU Directive 2002/91/EC	