



## 183 Tipton Hill Road, Sheffield, South Yorkshire, S10 5GF

Asking Price £275,000

- No onward chain
- South-West facing rear garden
- Large living/dining room
- Two double bedrooms
- Short, flat walk to local shops
- Popular location
- Off street parking
- Bus stop nearby

## 138 TAPTON HILL ROAD

APPROXIMATE GROSS INTERNAL AREA = 70.3 SQ M / 757 SQ FT

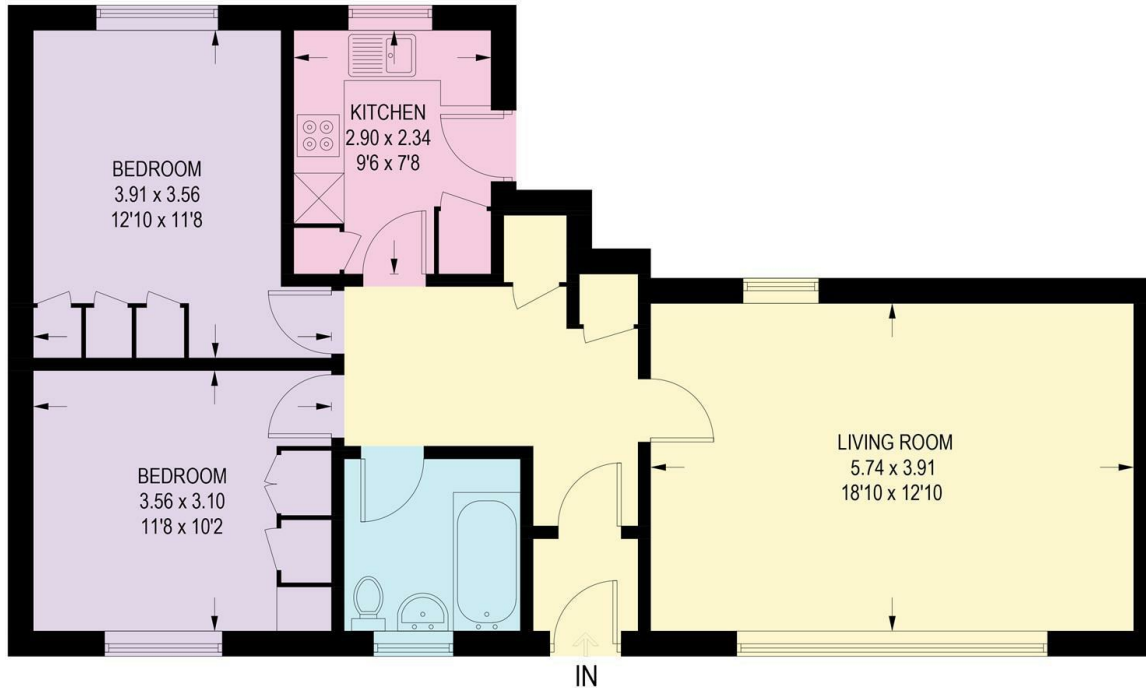
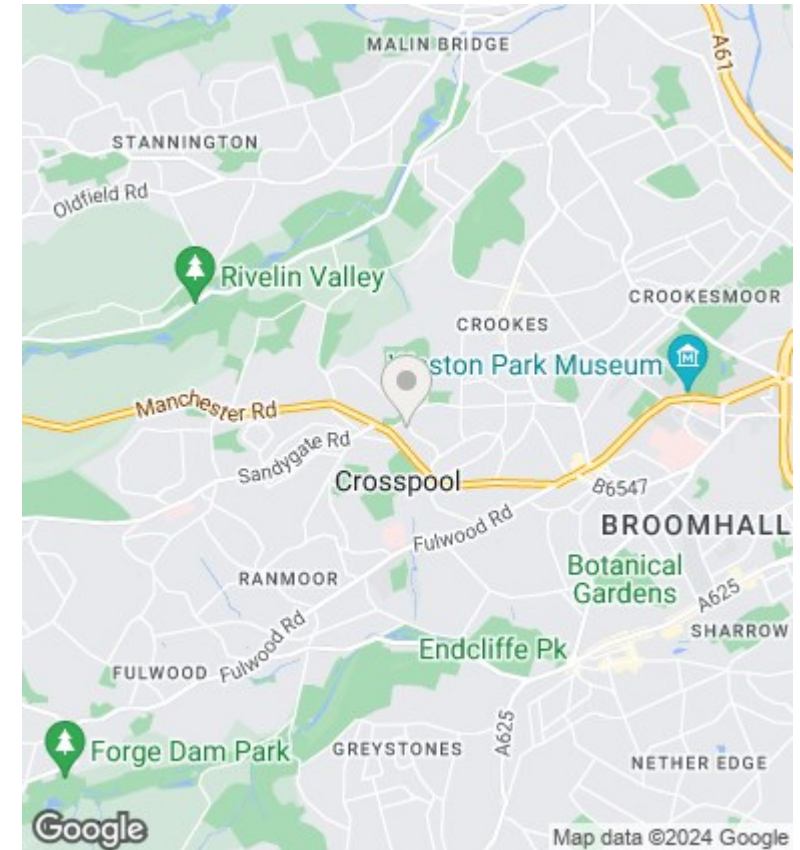


Illustration for identification purposes only, measurements are approximate, not to scale.



## Directions

## Viewings

Viewings by arrangement only. Call 01142 687777 to make an appointment.

## Council Tax Band

## EPC Rating:

Energy Efficiency Rating		
	Current	Potential
<i>Very energy efficient - lower running costs</i>		
(92 plus) <b>A</b>		
(81-91) <b>B</b>		
(69-80) <b>C</b>		
(55-68) <b>D</b>		
(39-54) <b>E</b>		
(21-38) <b>F</b>		
(1-20) <b>G</b>		
<i>Not energy efficient - higher running costs</i>		
<b>England &amp; Wales</b>	EU Directive 2002/91/EC	