



00 Lympstone Gardens, London, SE15 1BJ

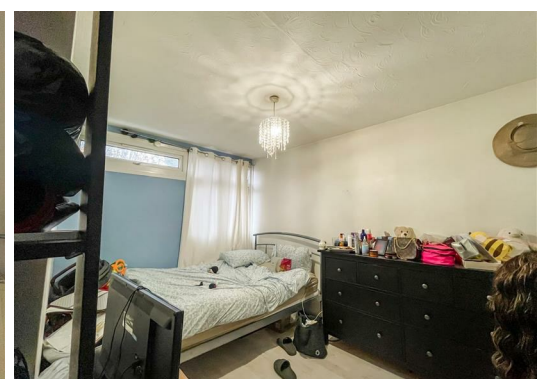
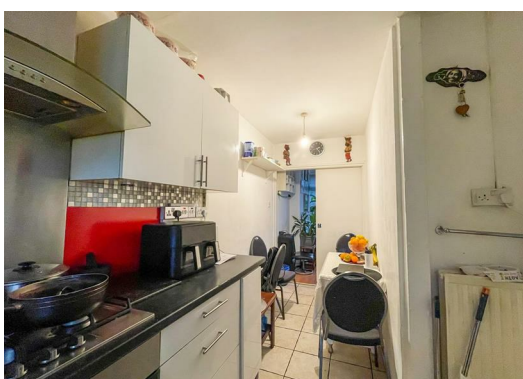
Offers in excess of £330,000

**** OFFERED WITH NO ONWARD CHAIN ****

Located in a popular and central location south of the River Thames in the city of London and situated in a residential area with other similar homes in between Bermondsey and Peckham. With fantastic access via rail and road into the city of London, this well priced home will appeal to many and is within reach of plenty of local amenities, shops, schools, bars and restaurants.

This maisonette which is on the ground and first floor offers great space and briefly consists: Lounge and kitchen, two bedrooms house bathroom and separate WC.

We strongly recommend an early inspection.



Disclaimer

1. MONEY LAUNDERING REGULATIONS: Intending purchasers will be asked to produce identification documentation at a later stage and we would ask for your co-operation in order that there will be no delay in agreeing the sale.
2. General: While we endeavour to make our sales particulars fair, accurate and reliable, they are only a general guide to the property and, accordingly, if there is any point which is of particular importance to you, please contact the office and we will be pleased to check the position for you, especially if you are contemplating travelling some distance to view the property.
3. Measurements: These approximate room sizes are only intended as general guidance. You must verify the dimensions carefully before ordering carpets or any built-in furniture.
4. Services: Please note we have not tested the services or any of the equipment or appliances in this property, accordingly we strongly advise prospective buyers to commission their own survey or service reports before finalising their offer to purchase.
5. THESE PARTICULARS ARE ISSUED IN GOOD FAITH BUT DO NOT CONSTITUTE REPRESENTATIONS OF FACT OR FORM PART OF ANY OFFER OR CONTRACT. THE MATTERS REFERRED TO IN THESE PARTICULARS SHOULD BE INDEPENDENTLY VERIFIED BY PROSPECTIVE BUYERS OR TENANTS. NEITHER GOODMOVE NOR ANY OF ITS EMPLOYEES OR AGENTS HAS ANY AUTHORITY TO MAKE OR GIVE ANY REPRESENTATION OR WARRANTY WHATEVER IN RELATION TO THIS PROPERTY.

Leasehold Information

103 years remaining on the lease
Ground rent: £10 per annum
Maintenance charge: £2172.57 per annum

This information is provided by the vendor and should be verified during the conveyancing process.

Energy Efficiency Rating		
	Current	Potential
Very energy efficient - lower running costs		
(92 plus) A		
(81-91) B		
(69-80) C		
(55-68) D		
(39-54) E		
(21-38) F		
(1-20) G		
Not energy efficient - higher running costs		
England & Wales EU Directive 2002/91/EC		

Environmental Impact (CO ₂) Rating		
	Current	Potential
Very environmentally friendly - lower CO ₂ emissions		
(92 plus) A		
(81-91) B		
(69-80) C		
(55-68) D		
(39-54) E		
(21-38) F		
(1-20) G		
Not environmentally friendly - higher CO ₂ emissions		
England & Wales EU Directive 2002/91/EC		



Ground Floor 4320 Park Approach, Thorpe Park, Leeds, LS15 8GB
Tel: 0113 892 1166
sales@goodmove.co.uk
www.goodmove.co.uk