



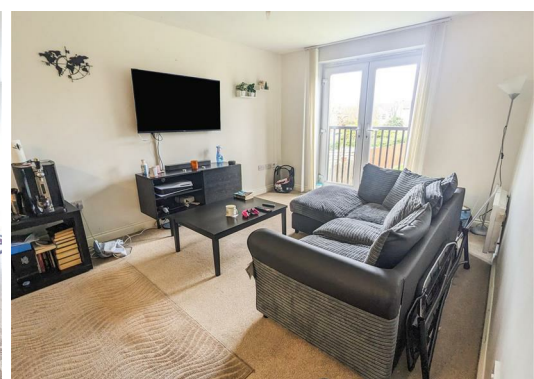
**Apartment 8, 141, Kenyon Court Kenyon Lane, Manchester, M40
9DJ
Offers in excess of £90,000**

SUITABLE FOR CASH BUYERS ONLY

This modern apartment comprises of a kitchen/living area, two bedrooms and a bathroom.

This property is situated 3 miles from Manchester's renowned Northern Quarter and 2.6 miles from Manchester Fort Shopping Park. The likes of Morrisons and Tesco can be found just a short distance away, off the popular Oldham Road area, and you'll also have easy accessibility to the wider Manchester and surrounding areas via the A62 and M60 links.

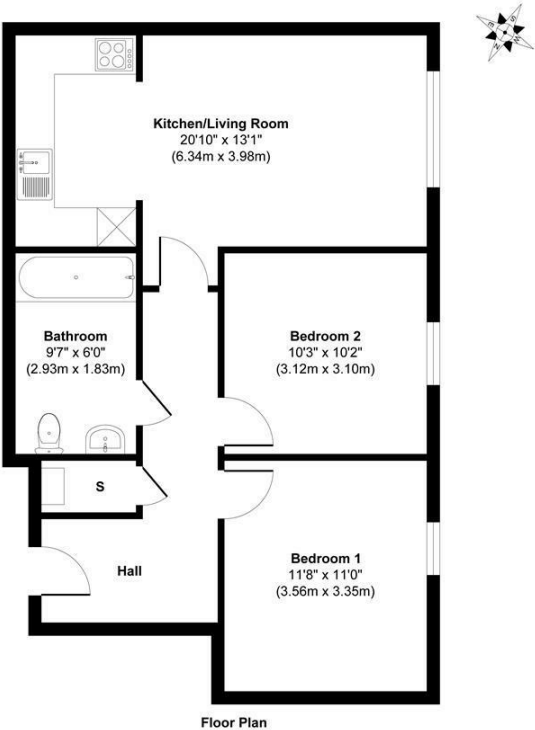
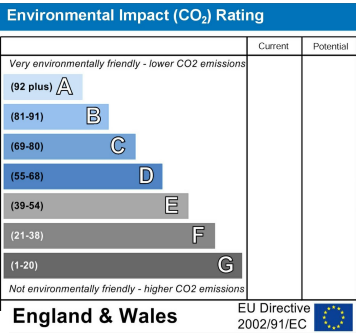
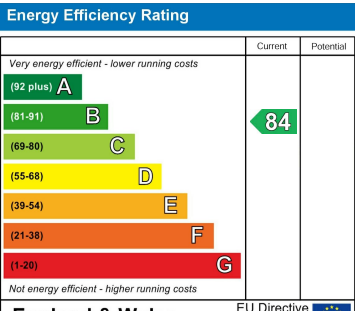
Call us today to book a viewing.



Disclaimer

1. MONEY LAUNDERING REGULATIONS: Intending purchasers will be asked to produce identification documentation at a later stage and we would ask for your co-operation in order that there will be no delay in agreeing the sale.
2. General: While we endeavour to make our sales particulars fair, accurate and reliable, they are only a general guide to the property and, accordingly, if there is any point which is of particular importance to you, please contact the office and we will be pleased to check the position for you, especially if you are contemplating travelling some distance to view the property.
3. Measurements: These approximate room sizes are only intended as general guidance. You must verify the dimensions carefully before ordering carpets or any built-in furniture.
4. Services: Please note we have not tested the services or any of the equipment or appliances in this property, accordingly we strongly advise prospective buyers to commission their own survey or service reports before finalising their offer to purchase.

5. THESE PARTICULARS ARE ISSUED IN GOOD FAITH BUT DO NOT CONSTITUTE REPRESENTATIONS OF FACT OR FORM PART OF ANY OFFER OR CONTRACT. THE MATTERS REFERRED TO IN THESE PARTICULARS SHOULD BE INDEPENDENTLY VERIFIED BY PROSPECTIVE BUYERS OR TENANTS. NEITHER GOODMOVE NOR ANY OF ITS EMPLOYEES OR AGENTS HAS ANY AUTHORITY TO MAKE OR GIVE ANY REPRESENTATION OR WARRANTY WHATEVER IN RELATION TO THIS PROPERTY.



Floor Plan

Approx. Gross Internal Floor Area 642 sq. ft / 59.70 sq. m

Whilst every attempt has been made to ensure the accuracy of the floor plan contained here, measurements of doors, windows, rooms and any other items are approximate and no responsibility is taken for any error, omission, or mis-statement. The measurements should not be relied upon for valuation, transaction and/or funding purposes. This plan is for illustrative purposes only and should be used as such by any prospective purchaser or tenant.



Ground Floor 4320 Park Approach, Thorpe Park, Leeds, LS15 8GB
Tel: 0113 892 1166
sales@goodmove.co.uk
www.goodmove.co.uk