

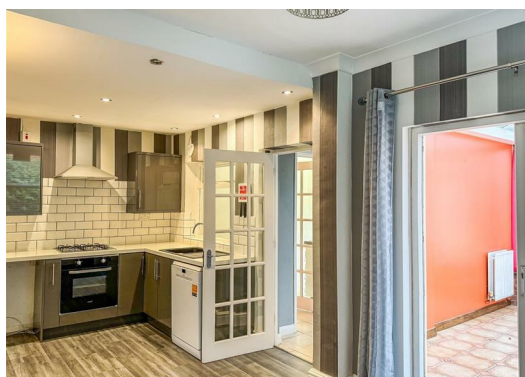


29 Cheltenham Road, Evesham, WR11 1LA Offers in excess of £345,000

Nestled on the charming Cheltenham Road in Evesham, this detached house boasts three reception rooms, three bedrooms and a bathroom.

Cheltenham Road is on the outskirts of Evesham & convenient for the A46 & the town centre. Evesham has a range of amenities to include; supermarkets, shops, restaurants, pubs, bars, take away outlets, coffee shops, bakeries, beauty salon, hair dressers, doctors, dentists, community hospital, leisure centre, the 'Regal' cinema & a range of schooling. Evesham is under 20 miles from historic Worcester city, the cultural & commercial centres of Cheltenham Spa & Shakespeare's Stratford upon Avon. Evesham has a train station with direct links to London Paddington.

Call us today to book a viewing.

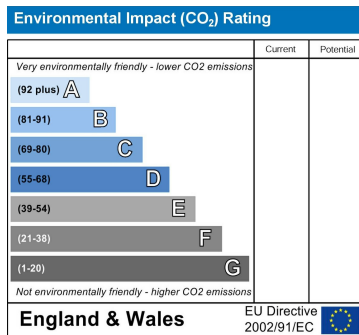
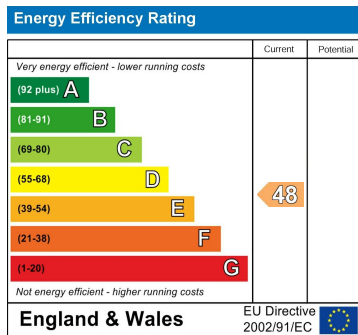


Disclaimer

1. MONEY LAUNDERING REGULATIONS: Intending purchasers will be asked to produce identification documentation at a later stage and we would ask for your co-operation in order that there will be no delay in agreeing the sale.
2. General: While we endeavour to make our sales particulars fair, accurate and reliable, they are only a general guide to the property and, accordingly, if there is any point which is of particular importance to you, please contact the office and we will be pleased to check the position for you, especially if you are contemplating travelling some distance to view the property.
3. Measurements: These approximate room sizes are only intended as general guidance. You must verify the dimensions carefully before ordering carpets or any built-in furniture.
4. Services: Please note we have not tested the services or any of the equipment or appliances in this property, accordingly we strongly advise prospective buyers to commission their own survey or service reports before finalising their offer to purchase.
5. THESE PARTICULARS ARE ISSUED IN GOOD FAITH BUT DO NOT CONSTITUTE REPRESENTATIONS OF FACT OR FORM PART OF ANY OFFER OR CONTRACT. THE MATTERS REFERRED TO IN THESE PARTICULARS SHOULD BE INDEPENDENTLY VERIFIED BY PROSPECTIVE BUYERS OR TENANTS. NEITHER GOODMOVE NOR ANY OF ITS EMPLOYEES OR AGENTS HAS ANY AUTHORITY TO MAKE OR GIVE ANY REPRESENTATION OR WARRANTY WHATSOEVER IN RELATION TO THIS PROPERTY.

Section 21

Under the terms of the Estate Agency Act 1979 (section 21) please note that the Vendor of this property is a staff member of the Goodmove Group.



Ground Floor 4320 Park Approach, Thorpe Park, Leeds, LS15 8GB

Tel: 0113 892 1166

sales@goodmove.co.uk

www.goodmove.co.uk