



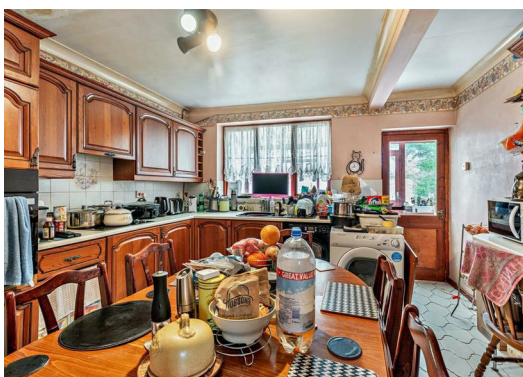
00 Fifth Avenue, Wolverhampton, WV10 9TB Offers in excess of £180,000

* ATTENTION BUYERS - SUITABLE PROPERTY TO RENNOVATE **

Goodmove are looking for a quick buyer to purchase this spacious home in the Fallings park area, North of the town centre of Wolverhampton.

With access to many local amenities and the m54 the property will suit many. The property which will require modernisation briefly consists: Entrance hall, breakfast kitchen, lounge and conservatory. Stairs to the first floor landing then lead three bedrooms and house bathroom.

A generous plot with garden and drive leading to the garage. With office space.



Disclaimer

- 1. MONEY LAUNDERING REGULATIONS:** Intending purchasers will be asked to produce identification documentation at a later stage and we would ask for your co-operation in order that there will be no delay in agreeing the sale.
- 2. General:** While we endeavour to make our sales particulars fair, accurate and reliable, they are only a general guide to the property and, accordingly, if there is any point which is of particular importance to you, please contact the office and we will be pleased to check the position for you, especially if you are contemplating travelling some distance to view the property.
- 3. Measurements:** These approximate room sizes are only intended as general guidance. You must verify the dimensions carefully before ordering carpets or any built-in furniture.
- 4. Services:** Please note we have not tested the services or any of the equipment or appliances in this property, accordingly we strongly advise prospective buyers to commission their own survey or service reports before finalising their offer to purchase.
- 5. THESE PARTICULARS ARE ISSUED IN GOOD FAITH BUT DO NOT CONSTITUTE REPRESENTATIONS OF FACT OR FORM PART OF ANY OFFER OR CONTRACT. THE MATTERS REFERRED TO IN THESE PARTICULARS SHOULD BE INDEPENDENTLY VERIFIED BY PROSPECTIVE BUYERS OR TENANTS. NEITHER GOODMOVE NOR ANY OF ITS EMPLOYEES OR AGENTS HAS ANY AUTHORITY TO MAKE OR GIVE ANY REPRESENTATION OR WARRANTY WHATSOEVER IN RELATION TO THIS PROPERTY.**

| Energy Efficiency Rating | | |
|--|-------------------------|-----------|
| | Current | Potential |
| <i>Very energy efficient - lower running costs</i> | | |
| (92 plus) A | | |
| (81-91) B | | |
| (69-80) C | | |
| (55-68) D | | |
| (39-54) E | | |
| (21-38) F | | |
| (1-20) G | | |
| <i>Not energy efficient - higher running costs</i> | | |
| England & Wales | EU Directive 2002/91/EC | |

| Environmental Impact (CO ₂) Rating | | |
|---|-------------------------|-----------|
| | Current | Potential |
| <i>Very environmentally friendly - lower CO₂ emissions</i> | | |
| (92 plus) A | | |
| (81-91) B | | |
| (69-80) C | | |
| (55-68) D | | |
| (39-54) E | | |
| (21-38) F | | |
| (1-20) G | | |
| <i>Not environmentally friendly - higher CO₂ emissions</i> | | |
| England & Wales | EU Directive 2002/91/EC | |

