



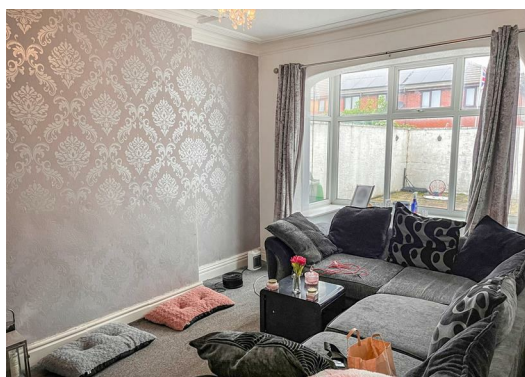
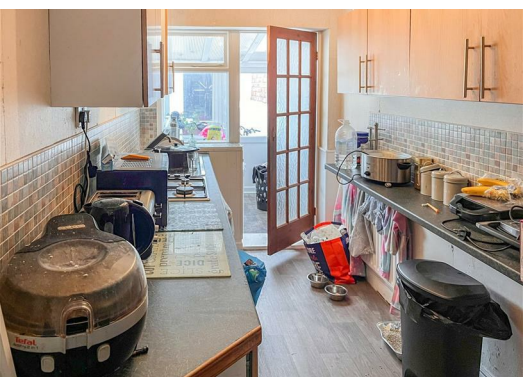
00 Lightwood Avenue, Blackpool, FY4 2AU Offers in excess of £110,000

**** SOLD WITH TENANT IN SITU*** Goodmove are delighted to present this three bedroom semi-detached house for a quick sale.

The property is conveniently located close to all local amenities including shops, schools and transport links.

The property briefly comprises; Entrance Hall, Lounge, Dining Room, Kitchen and Utility. To the first floor are three bedrooms and a family bathroom. Externally, there is a garden to the front and the rear and a brick built outbuilding.

The property has been attractively priced to promote a quick sale and would invite all buyers in a position to proceed to view. Please call for more information.



Disclaimer

- 1. MONEY LAUNDERING REGULATIONS:** Intending purchasers will be asked to produce identification documentation at a later stage and we would ask for your co-operation in order that there will be no delay in agreeing the sale.
- 2. General:** While we endeavour to make our sales particulars fair, accurate and reliable, they are only a general guide to the property and, accordingly, if there is any point which is of particular importance to you, please contact the office and we will be pleased to check the position for you, especially if you are contemplating travelling some distance to view the property.
- 3. Measurements:** These approximate room sizes are only intended as general guidance. You must verify the dimensions carefully before ordering carpets or any built-in furniture.
- 4. Services:** Please note we have not tested the services or any of the equipment or appliances in this property, accordingly we strongly advise prospective buyers to commission their own survey or service reports before finalising their offer to purchase.
- 5. THESE PARTICULARS ARE ISSUED IN GOOD FAITH BUT DO NOT CONSTITUTE REPRESENTATIONS OF FACT OR FORM PART OF ANY OFFER OR CONTRACT. THE MATTERS REFERRED TO IN THESE PARTICULARS SHOULD BE INDEPENDENTLY VERIFIED BY PROSPECTIVE BUYERS OR TENANTS. NEITHER GOODMOVE NOR ANY OF ITS EMPLOYEES OR AGENTS HAS ANY AUTHORITY TO MAKE OR GIVE ANY REPRESENTATION OR WARRANTY WHATSOEVER IN RELATION TO THIS PROPERTY.**

| Energy Efficiency Rating | | |
|--|-------------------------|-----------|
| | Current | Potential |
| <i>Very energy efficient - lower running costs</i> | | |
| (92 plus) A | | |
| (81-91) B | | |
| (69-80) C | | |
| (55-68) D | | |
| (39-54) E | | |
| (21-38) F | | |
| (1-20) G | | |
| <i>Not energy efficient - higher running costs</i> | | |
| England & Wales | EU Directive 2002/91/EC | |

| Environmental Impact (CO ₂) Rating | | |
|---|-------------------------|-----------|
| | Current | Potential |
| <i>Very environmentally friendly - lower CO₂ emissions</i> | | |
| (92 plus) A | | |
| (81-91) B | | |
| (69-80) C | | |
| (55-68) D | | |
| (39-54) E | | |
| (21-38) F | | |
| (1-20) G | | |
| <i>Not environmentally friendly - higher CO₂ emissions</i> | | |
| England & Wales | EU Directive 2002/91/EC | |

