



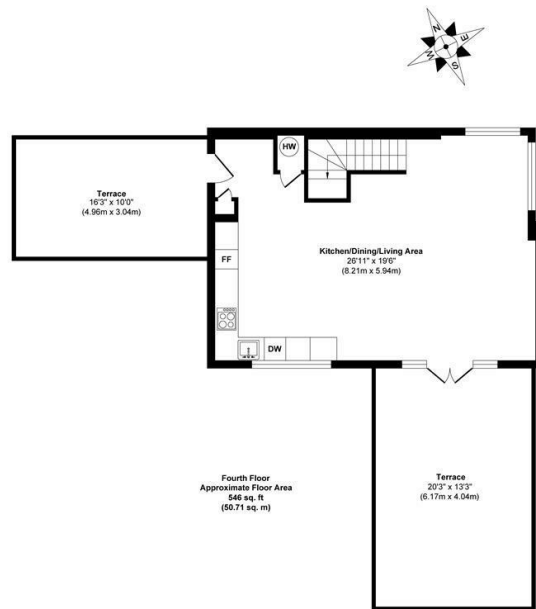
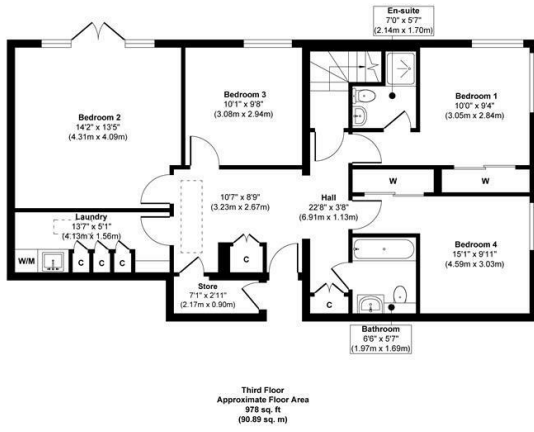
## 1 Disney Place, London, SE1 1HP Offers in excess of £1,425,000

Goodmove present this four bed PENTHOUSE apartment for QUICK SALE on Disney Place, Borough, London, SE1. Set within moments of London Bridge, this stunning 4 bedroom penthouse apartment boasts a superb open-plan reception/kitchen with access to 2 private terraces with views towards the Shard.

Disney Place is quietly set back from the main road yet benefits from an abundance of shops, eateries and transport links including London Bridge Station. Borough Market, London Bridge, Guys Hospital and The Shard are a stroll away. The property has been attractively priced to promote a quick sale and would invite all buyers in a position to proceed to view. Please call for more information.







**Approx. Gross Internal Floor Area 1524 sq. ft / 141.60 sq. m**

Whilst every attempt has been made to ensure the accuracy of the floor plan contained here, measurements of doors, windows, rooms and any other items are approximate and no responsibility is taken for any error, omission, or mis-statement. The measurements should not be relied upon for valuation, transaction and/or funding purposes. This plan is for illustrative purposes only and should be used as such by any prospective purchaser or tenant.

**Disclaimer**

- MONEY LAUNDERING REGULATIONS:** Intending purchasers will be asked to produce identification documentation at a later stage and we would ask for your co-operation in order that there will be no delay in agreeing the sale.
- General:** While we endeavour to make our sales particulars fair, accurate and reliable, they are only a general guide to the property and, accordingly, if there is any point which is of particular importance to you, please contact the office and we will be pleased to check the position for you, especially if you are contemplating travelling some distance to view the property.
- Measurements:** These approximate room sizes are only intended as general guidance. You must verify the dimensions carefully before ordering carpets or any built-in furniture.
- Services:** Please note we have not tested the services or any of the equipment or appliances in this property, accordingly we strongly advise prospective buyers to commission their own survey or service reports before finalising their offer to purchase.
- THESE PARTICULARS ARE ISSUED IN GOOD FAITH BUT DO NOT CONSTITUTE REPRESENTATIONS OF FACT OR**

FORM PART OF ANY OFFER OR CONTRACT. THE MATTERS REFERRED TO IN THESE PARTICULARS SHOULD BE INDEPENDENTLY VERIFIED BY PROSPECTIVE BUYERS OR TENANTS. NEITHER GOODMOVE NOR ANY OF ITS EMPLOYEES OR AGENTS HAS ANY AUTHORITY TO MAKE OR GIVE ANY REPRESENTATION OR WARRANTY WHATSOEVER IN RELATION TO THIS PROPERTY.

