



14 Copeland Road,
£260,000

🛏 3 🚗 1 🛋 1



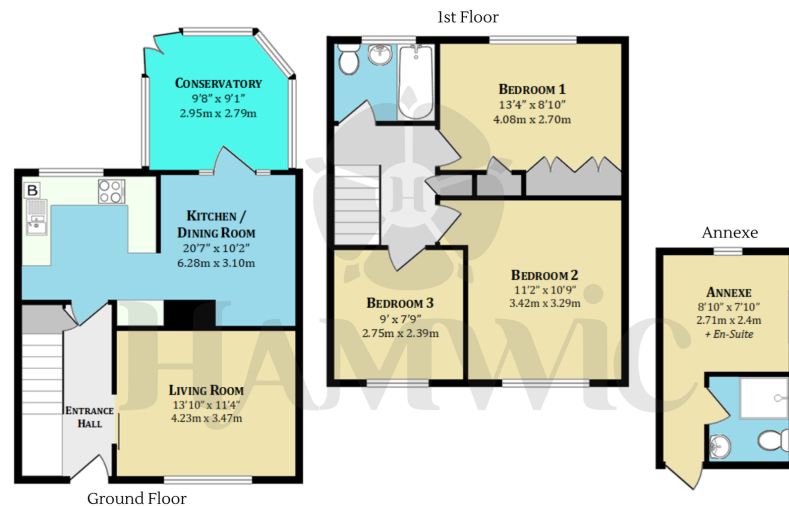
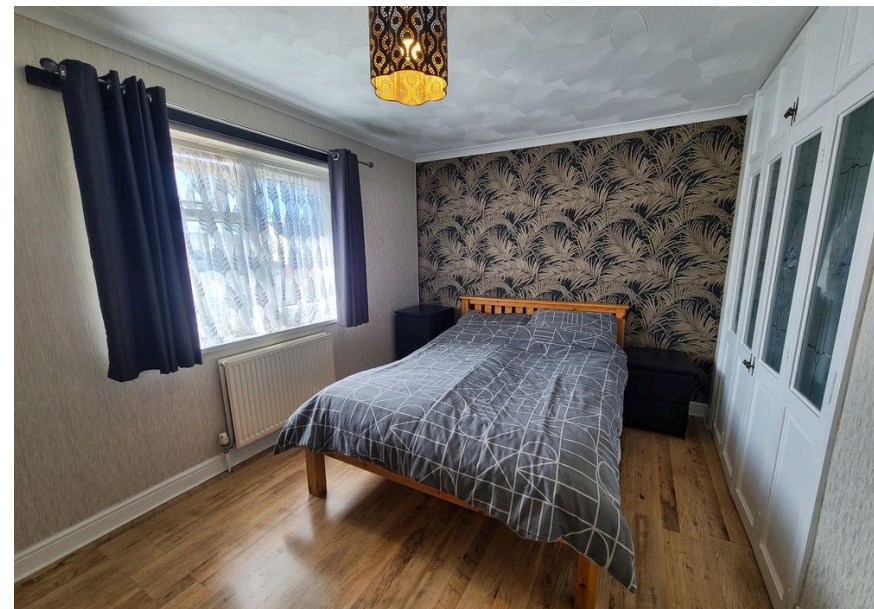
- Non-standard construction – cash buyers only
- Off-road parking and versatile garage/workshop
- Generous accommodation throughout
- Modern refitted open-plan kitchen and dining room
- Separate annexe facility – ideal for guests
- Excellent investment opportunity with flexible living space



We are delighted to present for sale this spacious and well-presented end of terrace home, ideally situated in Millbrook, Southampton. **Please note, due to its non-standard construction, this property is available to cash buyers only.**

The property offers generous accommodation throughout and has been thoughtfully updated to include a stylish, refitted open-plan kitchen and dining area, perfect for modern living. Further benefits include a fully glazed conservatory overlooking the garden, off-road parking, a versatile garage/workshop, and the rare addition of a separate annexe facility, ideal for extended family or guests.

With its flexible layout and excellent potential, this home presents an exciting opportunity for investors or buyers seeking a property with adaptable space and strong long-term value.



Find an energy certificate (i) English | Cymraeg

Energy performance certificate (EPC)

14 Coward Road SOUTHAMPTON SO16 9AB	Energy rating C	Valid until 7 August 2035
	Certificate number	6320-5585-6580-2465-3311

Property type End-terrace house

Total floor area 83 square metres

Rules on letting this property

Properties can be let if they have an energy rating from A to E.

You can read [guidance for landlords on the regulations and exemptions](#) (<https://www.gov.uk/guidance/landlords-exemptions>)

Energy rating and score

This property's energy rating is C. It has the potential to be C.

[See how to improve this property's energy efficiency](#)

“not all estate agents are the same”



enquiries@hamwicestateagents.co.uk

www.hamwicestateagents.co.uk

02380 663999