

Front Street

Framwellgate Moor, Durham DH1 5EE

- £110 Per Room, Per Week
 - Secure Parking
 - Lounge/Kitchen/Diner
 - Fully Furnished
- **ONLY ROOMS NOW AVAILABLE ARE LOCATED ON THE FIRST FLOOR**
- Inclusive Of Bills
- Recently Refurbished
- 4 En-Suite Rooms
- 2 Miles From Durham City

£125 Per Week

Council Tax Band: Exempt EPC Rating:

FULL DESCRIPTION

Available for the 26/27 academic year. £125 per room, per week, inclusive of utilities. This is an 8 bedroom property.

Gas central heating, UPVC Double glazing and new fixtures, fittings and furnishings throughout including high speed internet in every room. Situated within 2 miles of Durham City Centre and just a 7 minute walk from Durham New College.

The living accommodation comprises: Entrance hallway, cloakroom w.c, open plan lounge, fully equipped kitchen and dining room, Bedroom 1 with en-suite shower room.

To the first floor: Landing, 5 bedrooms, 2 with shared en-suite and separate shower room.

To the second floor: Landing and a further 2 bedrooms, both having en-suite shower rooms.

Externally secure off road parking is provided.

GROUND FLOOR

HALLWAY

CLOAKROOM/WC

BEDROOM 1

EN-SUITE SHOWER ROOM

COMMUNAL LOUNGE/KITCHEN/DINER

FIRST FLOOR LANDING

BEDROOM 2

BEDROOM 3

BEDROOM 4

BEDROOM 5

BEDROOM 6

SHARED EN-SUITE BATHROOM

SHOWER ROOM

SECOND FLOOR LANDING

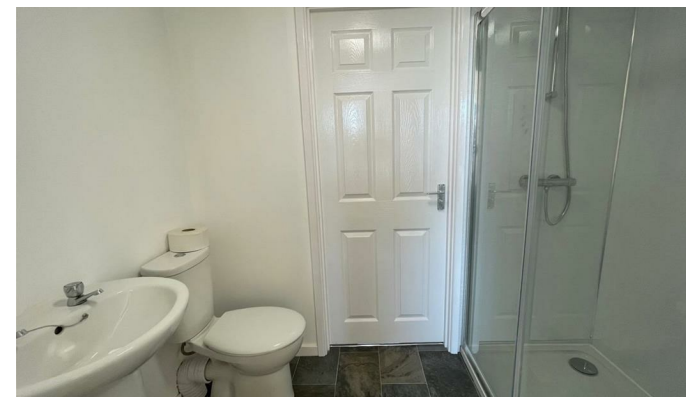
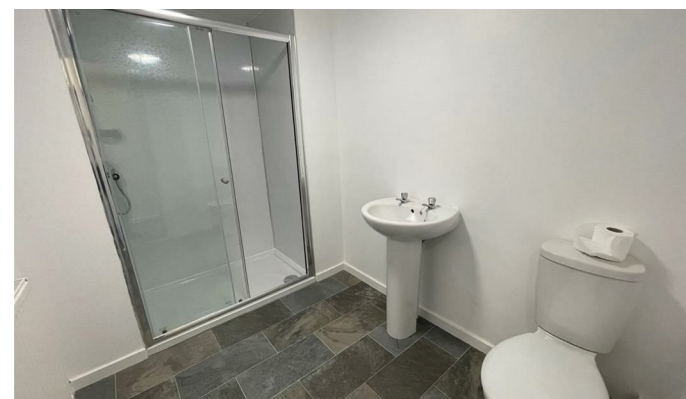
EN SUITE SHOWER ROOM

BEDROOM 7

ROOM 8

EN SUITE SHOWER ROOM

OFF ROAD PARKING



1 & 2 Blue Coat Buildings, Claypath,
Durham, County Durham, DH1 1RF

0191 3848440
enquiries@stuartedwards.com
www.stuartedwards.com

Agents Note: Whilst every care has been taken to prepare these particulars, they are for guidance purposes only. All measurements are approximate and for general guidance purposes only and whilst every care has been taken to ensure accuracy, they should not be relied upon and potential buyers/tenants are advised to recheck the measurements.