

STUART EDWARDS



Ellis Leazes

, Durham DH1 1JJ

- STUDENT RENTAL ACCOMMODATION 2026/2027
 - 4 BEDROOMS
 - LARGE BASEMENT COMMUNAL LOUNGE
 - REAR YARD
- £165PPPW EXCLUDING BILLS OR ADDITIONAL £20PPPW FOR BILLS INCLUDED
- MID TERRACED HOUSE
- FULLY EQUIPPED KITCHEN
- BATHROOM
- CLOSE TO DURHAM MARKET PLACE
- INCLUSIVE OF UTILITIES

£660 Per Week

Council Tax Band: Exempt
EPC Rating:

FULL DESCRIPTION

STUDENT ACCOMMODATION AVAILABLE 2026/2027.

£165PPPW EXCLUDING BILLS OR AN ADDITIONAL £20PPPW FOR BILLS INCLUDED

(Utilities include, gas, electricity, water and broadband with a cap of £4200 PA)

Student rental accommodation based in the Claypath area of Durham City. The spacious layout comprises; hallway, kitchen, bathroom, ground floor bedroom and a great sized basement lounge. On the first floor there are three further bedrooms with an enclosed yard to the rear of the property.

ENTRANCE

KITCHEN

14'0" x 5'4"

Range of wall and floor units with laminate worktops and inset stainless steel sink unit. Appliances and radiator.

BATHROOM W/C

White suite comprising@ low level wc, wash hand basin, panel bath with electric shower over and glass screen, décor panelled walls and radiator.

BEDROOM

11'4" x 12'4"

Double radiator.

BASEMENT

COMMUNAL LOUNGE

13'10" x 13'2"

Double radiator.

FIRST FLOOR LANDING

BEDROOM

14'0" x 6'0"

Radiator.

BEDROOM

11'9" x 7'11"

Radiator.

BEDROOM

13'4" x 9'6"

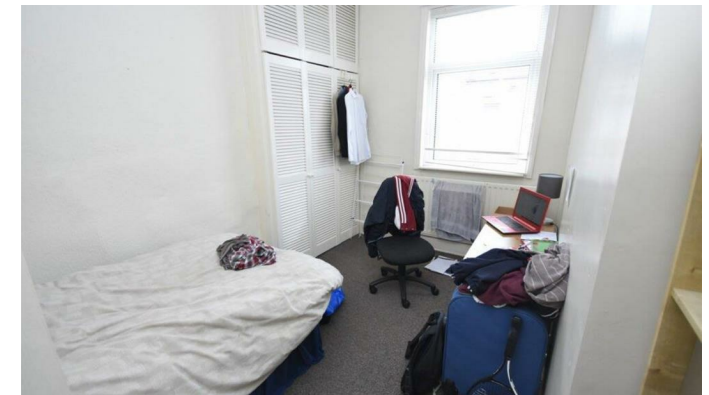
Radiator and a range of fitted wardrobes.

REAR YARD

EPC.

EPC Rating -

EPC Link -



1 & 2 Blue Coat Buildings, Claypath,
Durham, County Durham, DH1 1RF

0191 3848440
enquiries@stuartedwards.com
www.stuartedwards.com

Agents Note: Whilst every care has been taken to prepare these particulars, they are for guidance purposes only. All measurements are approximate and for general guidance purposes only and whilst every care has been taken to ensure accuracy, they should not be relied upon and potential buyers/tenants are advised to recheck the measurements.