

STUART EDWARDS

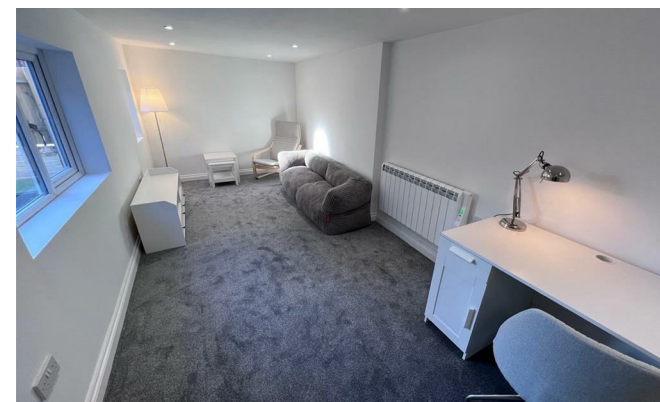


Nevilles Cross Bank

Durham City, Durham DH1 4JF

- STUDENT ACCOMMODATION ACCADEMIC YEAR 2025/2026
- SUBSTANTIAL END TERRACED HOUSE
- COMMUNAL LOUNGE & DINING ROOM
 - 3 EN-SUITES & 1 BATHROOM
 - FULLY EQUIPPED KITCHEN
- SINGLE TENANTS WELCOME
 - 6 ROOMS AVAILABLE
- REAR YARD
 - £150 PER ROOM PER WEEK INCLUSIVE OF UTILITIES
 - GAS CH & UPVC DOUBLE GLAZING

£150 Per Week



Council Tax Band: Exempt EPC Rating: E

FULL DESCRIPTION

Substantial, well maintained student accommodation available for academic year 2025/2026.

SINGLE TENANTS WELCOME.

£150 PER ROOM PER WEEK, INCLUSIVE OF UTILITIES FOR NONE EN-SUITE ROOMS.

£160 PER ROOM PER WEEK, INCLUSIVE OF UTILITIES FOR EN-SUITE ROOMS.

Fully furnished throughout and with 6 rooms available.

The internal living accommodation comprises: entrance hallway, fully equipped re-fitted kitchen/utility room, newly refurbished communal lounge and dining room, 6 bedrooms, 3 en-suites and a bathroom.

Externally there's a yard area to the rear.

Benefiting from gas central heating and UPVC double glazing.

Within walking distance of Durham City Centre.

Early reservation is recommended to avoid disappointment.

ENTRANCE

Lobby leading to ground floor front room.

COMMUNAL LOUNGE

COMMUNAL DINING ROOM

13'10" x 13'3"

Ceramic tiled flooring and radiator.

RE-FITTED KITCHEN

8'11" x 6'9"

Range of wall and floor units with laminated worktops and inset stainless single drainer sink unit. Ceramic tiled flooring.

LIVING ROOM

CLOAKROOM/WC

Low level wc and pedestal wash basin.

UTILITY ROOM

6'11" x 6'11"

Plumbed for automatic washing machine, ceramic tiled flooring and wall mounted central heating boiler.

SIDE ENTRANCE LOBBY

Ceramic tiled flooring , hallway leading to stairs.

BEDROOM 1

16'11" x 9'6"

Double radiator.

EN-SUITE

Low level wc, pedestal wash basin and shower cubicle. Ceramic tiled flooring and extractor fan.

BEDROOM TWO

EN-SUITE

FIRST FLOOR

BEDROOM THREE

1 & 2 Blue Coat Buildings, Claypath,
Durham, County Durham, DH1 1RF

0191 3848440
enquiries@stuartedwards.com
www.stuartedwards.com

Agents Note: Whilst every care has been taken to prepare these particulars, they are for guidance purposes only. All measurements are approximate and for general guidance purposes only and whilst every care has been taken to ensure accuracy, they should not be relied upon and potential buyers/tenants are advised to recheck the measurements.

