

STUART EDWARDS



Elvet Bridge

Durham City, Durham DH1 3AA

- Student Accommodation
 - 3 Bedrooms
- Bathroom with shower
- Gas Central Heating
- £198 Per Room Per Week
- Academic Year 2025/2026
 - Lounge & Kitchen
 - Prime Location
- UPVC Double Glazing
- Inclusive of Utilities

£594 Per Week



Council Tax Band: Exempt
EPC Rating: E

FULL DESCRIPTION

STUDENT ACCOMMODATION AVAILABLE 2025/2026.

£198 PER ROOM PER WEEK. INCLUSIVE OF UTILITIES.

(Utilities include, gas, electricity, water and broadband with a cap of £3500PA.

Situated over three floors and accessed through its own entrance off the main street, the living accommodation comprises: lounge, full bathroom suite with overhead shower, 3 bedrooms and fully equipped kitchen.

Elvet Bridge is a prime location within the centre of Durham City and interest should be expressed early to avoid disappointment.

ENTRANCE

LOUNGE

16'6" x 11'10"

BEDROOM 1

12'10" x 11'9"

SHOWER ROOM

SECOND FLOOR

BEDROOM 2

17'1" x 9'1"

BEDROOM 3

11'5" x 7'11"

THIRD FLOOR

KITCHEN

12'9" x 8'8"

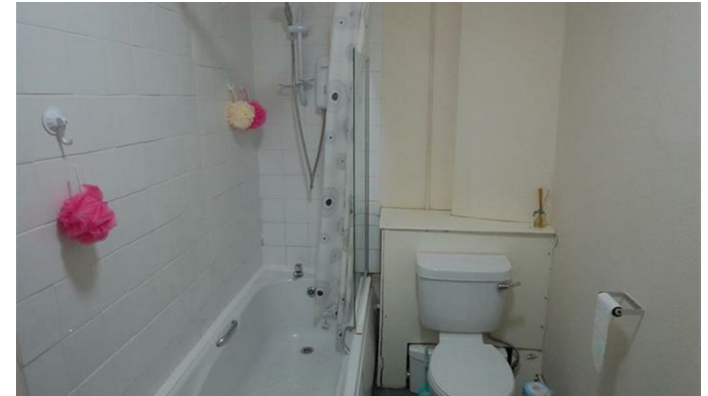
EPC.

EPC Rating - E

EPC Link - <https://find-energy-certificate.service.gov.uk/energy-certificate/8808-8735-1429-4726-3363>

IMPORTANT INFORMATION

Please note that all sizes have been measured with an electronic measure tape and are approximations only. Under the terms of the Misdescription Act we are obliged to point out that none of these services have been tested by ourselves. We cannot vouch that any of the installations described in these particulars are in perfect working order. We present the details of this property in good faith and they were accurate at the time of which we inspected the property. Stuart Edwards for themselves and for the vendors or lessors of this property whose agents they are, give notice, that: (1) the particulars are in produced in good faith, are set out as a general guide only, and do not constitute any part of a contract; (2) no person in the employment of Stuart Edwards has the authority to make or give any representation or warranty in relation to this property.



1 & 2 Blue Coat Buildings, Claypath,
Durham, County Durham, DH1 1RF

0191 3848440
enquiries@stuartedwards.com
www.stuartedwards.com

Agents Note: Whilst every care has been taken to prepare these particulars, they are for guidance purposes only. All measurements are approximate and for general guidance purposes only and whilst every care has been taken to ensure accuracy, they should not be relied upon and potential buyers/tenants are advised to recheck the measurements.