



YORKSHIRE'S  
**FINEST**  
HOMES COLLECTION



# Shroggs Stables, Halifax

Offers In The Region Of

£625,000

- Detached 4/5-bedroom family home
- Outline Planning permission in place for a second 4-bedroom detached dwelling
- Three bathrooms (two en-suite)
- Flexible layout with lounge, dining kitchen, and study
- Integral double garage with loft storage

A rare and exciting opportunity to acquire a substantial and well-presented four/five-bedroom detached property, occupying a generous plot complete with stable, paddock, workshop and out building, and the added benefit of full planning permission, which has been granted for a separate four-bedroom detached dwelling within the side garden and potential for further development.

This versatile home offers a blend of stylish family living and rural charm, and is ideally suited to those for developers, or buyers seeking multi-generational potential. The property is offered to the market with no onward chain.



A rare and exciting opportunity to acquire a substantial and well-presented four/five-bedroom detached property, occupying a generous plot complete with stable, paddock, and the added benefit of outline planning permission for a separate four-bedroom detached dwelling within the side garden.

This versatile home offers a blend of stylish family living and rural charm, and is ideally suited to those for developers, or buyers seeking multi-generational potential. The property is offered to the market with no onward chain.

#### Ground Floor Entrance Hall

A warm and welcoming entrance hall with stunning Tiled flooring sets the tone for this impressive home.

#### Lounge

A spacious and tastefully decorated lounge with neutral tones, wood-effect flooring, and a charming feature fireplace. Double doors open out to the garden, perfectly blending indoor and outdoor living — ideal for relaxing or entertaining.

#### Kitchen/Diner

A wonderful country-style kitchen with ample wall and base units, a central island featuring a breakfast bar, and a statement stove cooker as the focal point. There is plumbing for a dishwasher and space for an American-style fridge freezer. A cozy corner seating area offers the perfect space for family meals and entertaining guests. Double doors lead out to the garden — ideal for summer barbecues. A side door provides internal access to the double garage, which offers extensive storage space in the eaves and potential for expansion (lapsed planning permission for a bedroom extension).

#### Study/Bedroom 5

A flexible ground floor room currently used as a study but easily adaptable as a fifth bedroom. Features neutral





décor and garden views.

#### Downstairs Cloakroom

A stylish two-piece suite, ideal for guests.

#### First Floor

##### Principal Bedroom

A beautifully appointed master bedroom with a Juliet balcony offering picturesque views of nearby woodlands. Access to a private en-suite with corner shower, vanity unit with wash basin, and low-level WC.

##### Bedroom Two

A generous double bedroom with modern neutral décor and access to an en-suite bathroom featuring a curved bath with shower over, wash basin, and WC.

##### Bedrooms Three & Four

Two further double bedrooms situated at the front of the property. One benefits from fitted wardrobes, and both enjoy high-quality carpets, neutral tones, and woodland views.

##### Family Bathroom

A spacious and well-appointed bathroom with a freestanding bath, dual-head shower, vanity unit with wash basin, and WC.

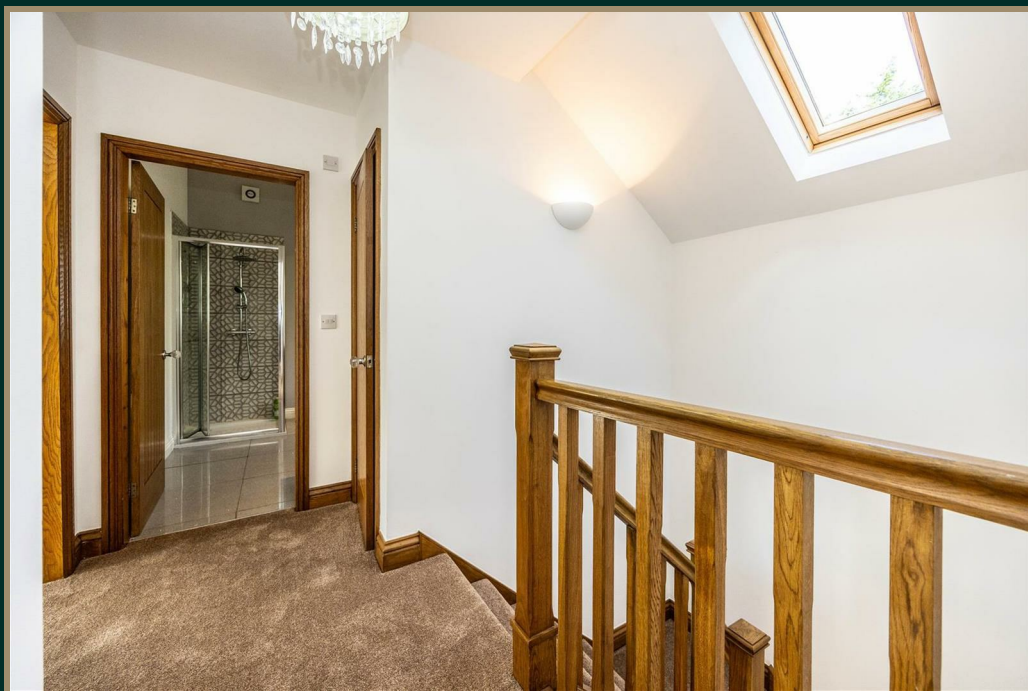
#### External Features

The property is approached via a driveway that provides ample parking and leads to the stable block, store room, and integral double garage. The home also boasts lawns and patio areas perfect for outdoor entertaining, alongside a paddock, making it ideal for those seeking a rural lifestyle.

#### Development Potential

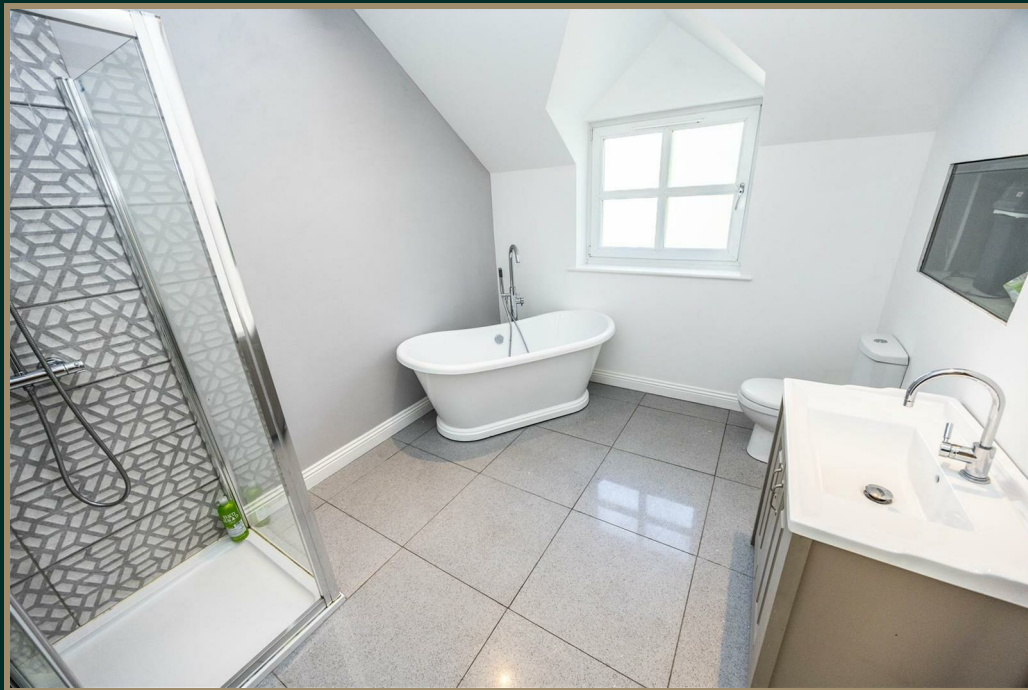
Planning permission was previously granted for a four-bedroom detached property on the side garden. This offers a rare opportunity for redevelopment or extended family living .







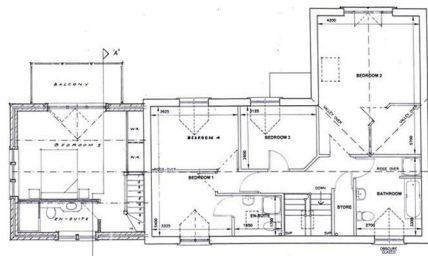




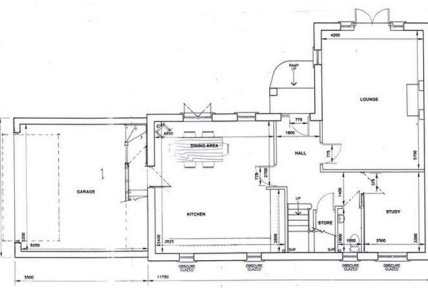








FIRST FLOOR LEVEL SCALE 1:50



GROUND FLOOR LEVEL SCALE 1:50



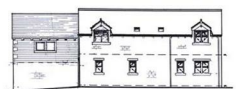
SOUTH WEST ELEVATION SCALE 1:100



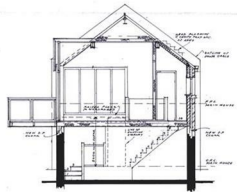
NORTH WEST ELEVATION



SOUTH EAST ELEVATION



NORTH EAST ELEVATION

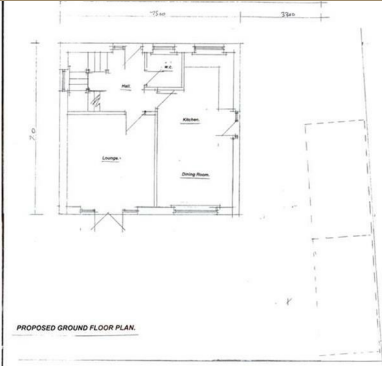


CROSS SECTION X-X

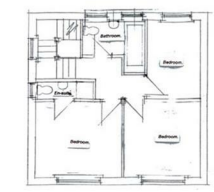


LOCATION PLAN SCALE 1:500

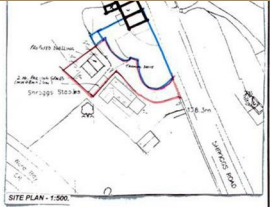
JOHN ROCHE	ARCHITECT
100, 101, 102, 103, 104, 105, 106, 107, 108, 109, 110, 111, 112, 113, 114, 115, 116, 117, 118, 119, 120, 121, 122, 123, 124, 125, 126, 127, 128, 129, 130, 131, 132, 133, 134, 135, 136, 137, 138, 139, 140, 141, 142, 143, 144, 145, 146, 147, 148, 149, 150, 151, 152, 153, 154, 155, 156, 157, 158, 159, 160, 161, 162, 163, 164, 165, 166, 167, 168, 169, 170, 171, 172, 173, 174, 175, 176, 177, 178, 179, 180, 181, 182, 183, 184, 185, 186, 187, 188, 189, 190, 191, 192, 193, 194, 195, 196, 197, 198, 199, 200, 201, 202, 203, 204, 205, 206, 207, 208, 209, 210, 211, 212, 213, 214, 215, 216, 217, 218, 219, 220, 221, 222, 223, 224, 225, 226, 227, 228, 229, 230, 231, 232, 233, 234, 235, 236, 237, 238, 239, 240, 241, 242, 243, 244, 245, 246, 247, 248, 249, 250, 251, 252, 253, 254, 255, 256, 257, 258, 259, 260, 261, 262, 263, 264, 265, 266, 267, 268, 269, 270, 271, 272, 273, 274, 275, 276, 277, 278, 279, 280, 281, 282, 283, 284, 285, 286, 287, 288, 289, 290, 291, 292, 293, 294, 295, 296, 297, 298, 299, 300, 301, 302, 303, 304, 305, 306, 307, 308, 309, 310, 311, 312, 313, 314, 315, 316, 317, 318, 319, 320, 321, 322, 323, 324, 325, 326, 327, 328, 329, 330, 331, 332, 333, 334, 335, 336, 337, 338, 339, 340, 341, 342, 343, 344, 345, 346, 347, 348, 349, 350, 351, 352, 353, 354, 355, 356, 357, 358, 359, 360, 361, 362, 363, 364, 365, 366, 367, 368, 369, 370, 371, 372, 373, 374, 375, 376, 377, 378, 379, 380, 381, 382, 383, 384, 385, 386, 387, 388, 389, 390, 391, 392, 393, 394, 395, 396, 397, 398, 399, 400, 401, 402, 403, 404, 405, 406, 407, 408, 409, 410, 411, 412, 413, 414, 415, 416, 417, 418, 419, 420, 421, 422, 423, 424, 425, 426, 427, 428, 429, 430, 431, 432, 433, 434, 435, 436, 437, 438, 439, 440, 441, 442, 443, 444, 445, 446, 447, 448, 449, 450, 451, 452, 453, 454, 455, 456, 457, 458, 459, 460, 461, 462, 463, 464, 465, 466, 467, 468, 469, 470, 471, 472, 473, 474, 475, 476, 477, 478, 479, 480, 481, 482, 483, 484, 485, 486, 487, 488, 489, 490, 491, 492, 493, 494, 495, 496, 497, 498, 499, 500, 501, 502, 503, 504, 505, 506, 507, 508, 509, 510, 511, 512, 513, 514, 515, 516, 517, 518, 519, 520, 521, 522, 523, 524, 525, 526, 527, 528, 529, 530, 531, 532, 533, 534, 535, 536, 537, 538, 539, 540, 541, 542, 543, 544, 545, 546, 547, 548, 549, 550, 551, 552, 553, 554, 555, 556, 557, 558, 559, 560, 561, 562, 563, 564, 565, 566, 567, 568, 569, 570, 571, 572, 573, 574, 575, 576, 577, 578, 579, 580, 581, 582, 583, 584, 585, 586, 587, 588, 589, 590, 591, 592, 593, 594, 595, 596, 597, 598, 599, 600, 601, 602, 603, 604, 605, 606, 607, 608, 609, 610, 611, 612, 613, 614, 615, 616, 617, 618, 619, 620, 621, 622, 623, 624, 625, 626, 627, 628, 629, 630, 631, 632, 633, 634, 635, 636, 637, 638, 639, 640, 641, 642, 643, 644, 645, 646, 647, 648, 649, 650, 651, 652, 653, 654, 655, 656, 657, 658, 659, 660, 661, 662, 663, 664, 665, 666, 667, 668, 669, 670, 671, 672, 673, 674, 675, 676, 677, 678, 679, 680, 681, 682, 683, 684, 685, 686, 687, 688, 689, 690, 691, 692, 693, 694, 695, 696, 697, 698, 699, 700, 701, 702, 703, 704, 705, 706, 707, 708, 709, 710, 711, 712, 713, 714, 715, 716, 717, 718, 719, 720, 721, 722, 723, 724, 725, 726, 727, 728, 729, 730, 731, 732, 733, 734, 735, 736, 737, 738, 739, 740, 741, 742, 743, 744, 745, 746, 747, 748, 749, 750, 751, 752, 753, 754, 755, 756, 757, 758, 759, 760, 761, 762, 763, 764, 765, 766, 767, 768, 769, 770, 771, 772, 773, 774, 775, 776, 777, 778, 779, 780, 781, 782, 783, 784, 785, 786, 787, 788, 789, 790, 791, 792, 793, 794, 795, 796, 797, 798, 799, 800, 801, 802, 803, 804, 805, 806, 807, 808, 809, 810, 811, 812, 813, 814, 815, 816, 817, 818, 819, 820, 821, 822, 823, 824, 825, 826, 827, 828, 829, 830, 831, 832, 833, 834, 835, 836, 837, 838, 839, 840, 841, 842, 843, 844, 845, 846, 847, 848, 849, 850, 851, 852, 853, 854, 855, 856, 857, 858, 859, 860, 861, 862, 863, 864, 865, 866, 867, 868, 869, 870, 871, 872, 873, 874, 875, 876, 877, 878, 879, 880, 881, 882, 883, 884, 885, 886, 887, 888, 889, 890, 891, 892, 893, 894, 895, 896, 897, 898, 899, 900, 901, 902, 903, 904, 905, 906, 907, 908, 909, 910, 911, 912, 913, 914, 915, 916, 917, 918, 919, 920, 921, 922, 923, 924, 925, 926, 927, 928, 929, 930, 931, 932, 933, 934, 935, 936, 937, 938, 939, 940, 941, 942, 943, 944, 945, 946, 947, 948, 949, 950, 951, 952, 953, 954, 955, 956, 957, 958, 959, 960, 961, 962, 963, 964, 965, 966, 967, 968, 969, 970, 971, 972, 973, 974, 975, 976, 977, 978, 979, 980, 981, 982, 983, 984, 985, 986, 987, 988, 989, 990, 991, 992, 993, 994, 995, 996, 997, 998, 999, 1000	



PROPOSED GROUND FLOOR PLAN



PROPOSED FIRST FLOOR PLAN

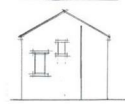


SITE PLAN - 1:500

NORTH EAST ELEVATION



NORTH WEST ELEVATION



SOUTH WEST ELEVATION



SOUTH EAST ELEVATION

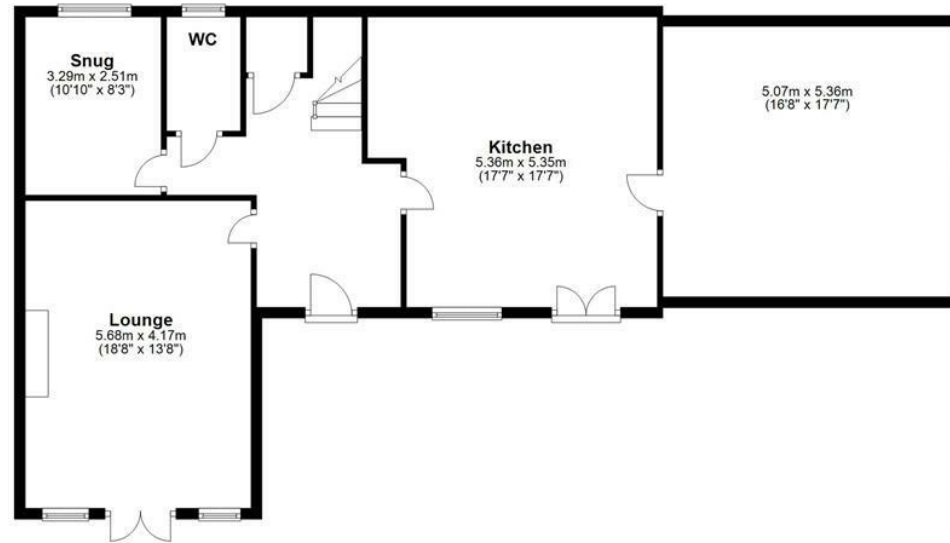


LOCATION PLAN - 1:2500

**PROPOSED DETACHED DWELLING**  
**AT:**  
**SHRODS ROAD,**  
**WHEATLEY,**  
**HALFAX.**  
**SCALE 1:50 & 1:100**

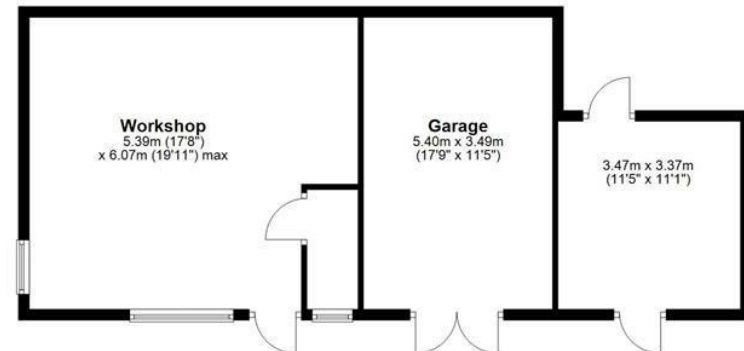
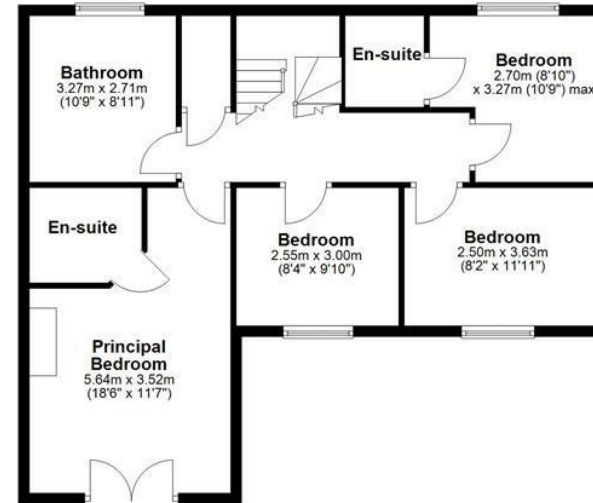
### Ground Floor

Approx. 105.7 sq. metres (1137.6 sq. feet)



### First Floor

Approx. 134.9 sq. metres (1452.6 sq. feet)



Total area: approx. 240.6 sq. metres (2590.2 sq. feet)



YORKSHIRE'S  
**FINEST**  
HOMES COLLECTION

To view Shroggs Stables, Halifax  
Call 01484 432 773  
Email [sales@yorkshiresfinest.co.uk](mailto:sales@yorkshiresfinest.co.uk)