



naomi j ryan
estate agents



Flat - Second Floor



Bedrooms: 1



Bathrooms: 1



Receptions: 1



Heating: Electric



Parking: n/a



Garden: n/a



Council Tax Band: A

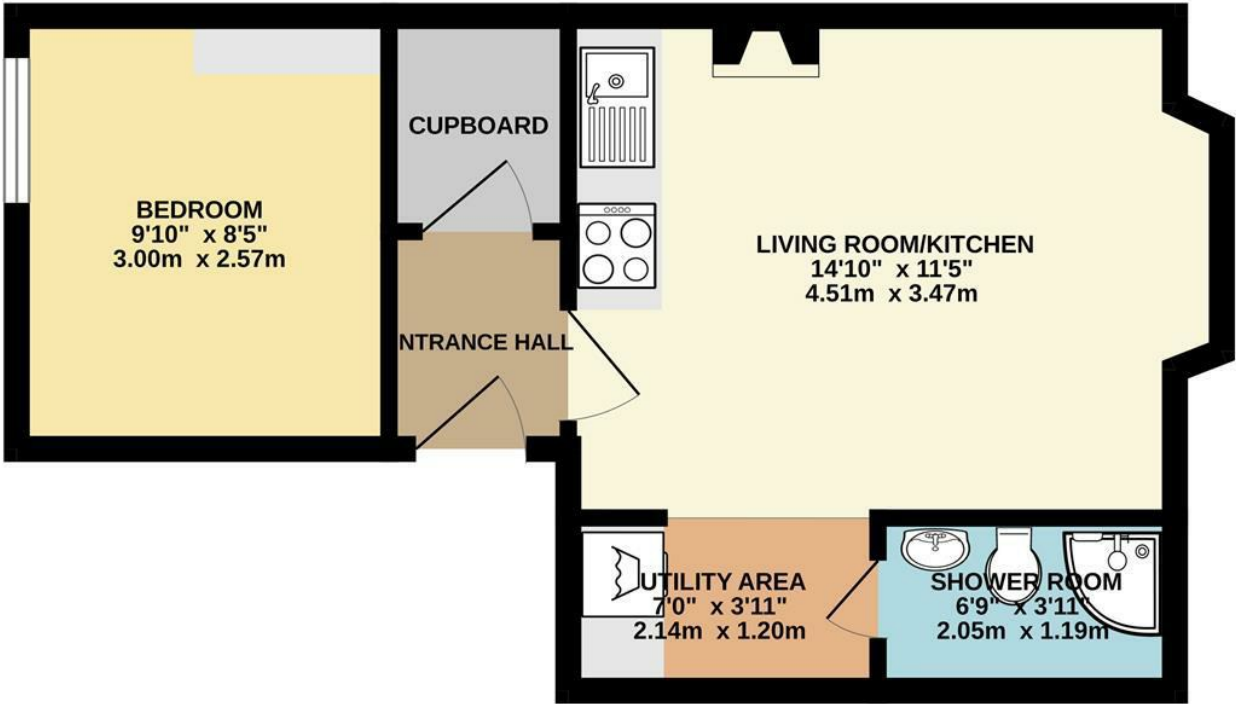
£915

Leighton Terrace,

, Exeter, EX4 6AZ

www.naomijryan.co.uk

GROUND FLOOR
337 sq.ft. (31.3 sq.m.) approx.



TOTAL FLOOR AREA : 337 sq.ft. (31.3 sq.m.) approx.
Whilst every attempt has been made to ensure the accuracy of the floorplan contained here, measurements of doors, windows, rooms and any other items are approximate and no responsibility is taken for any error, omission or mis-statement. This plan is for illustrative purposes only and should be used as such by any prospective purchaser. The services, systems and appliances shown have not been tested and no guarantee as to their operability or efficiency can be given.
Made with Metropix ©2025

SUMMARY

We are delighted to offer for let this exceptionally well presented second floor apartment located in the centre of Exeter.

The property has previously undergone a full renovation and in brief comprises; entrance hall, one double bedroom, open plan kitchen/living room, utility area and shower room.

The gloss white kitchen benefits from oven, hob, extractor, integral slimline dishwasher & freestanding fridge/freezer. There is also a washer/dryer in the utility area.

The property is light and spacious with a beautiful bay window in the living area, neutral décor throughout and is available with immediate effect, subject to satisfactory references.

Single Occupancy.

Council Tax Band A.

Energy Performance Rating C.

No Pets.

Holding Deposit £211.



naomi j ryan
estate agents

