



Francis Atkins House

£145,000

- Beautifully presented throughout with lots of natural light
- Lovely views over the river Usk
- Spacious lounge diner with bay window
- Two double bedrooms, master with fitted wardrobes
- Allocated parking
- Excellent transport links
- EPC Rating: B





About the property

This beautifully positioned two-bed upper-floor flat offers truly superb river views, creating a peaceful and picturesque backdrop to everyday living.

Flooded with natural light, the property provides a bright and welcoming atmosphere, making it an ideal home for first-time buyers, investors, or those seeking a stylish and serene retreat close to the heart of Newport.

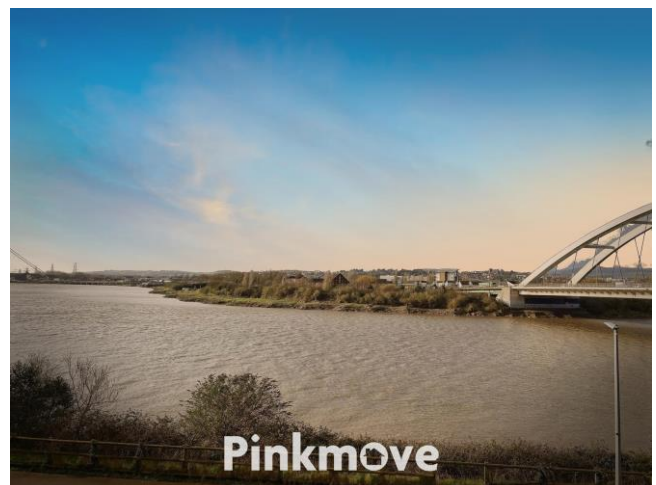
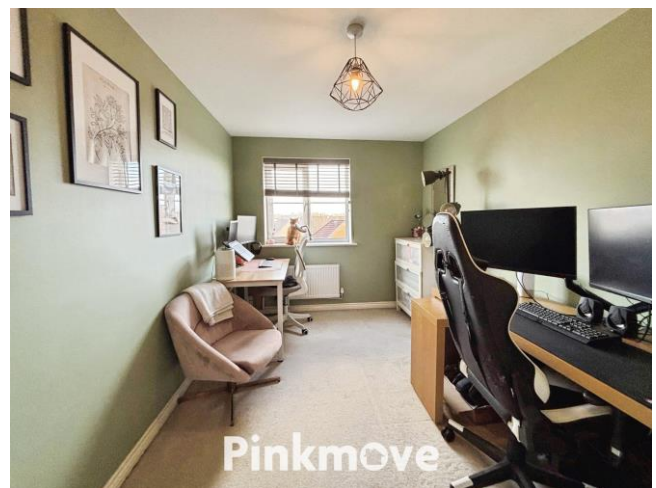
Residents benefit from a well-maintained communal garden, perfect for relaxing outdoors, along with the convenience of an allocated parking space and additional visitor parking, ensuring ease and practicality for both you and your guests.

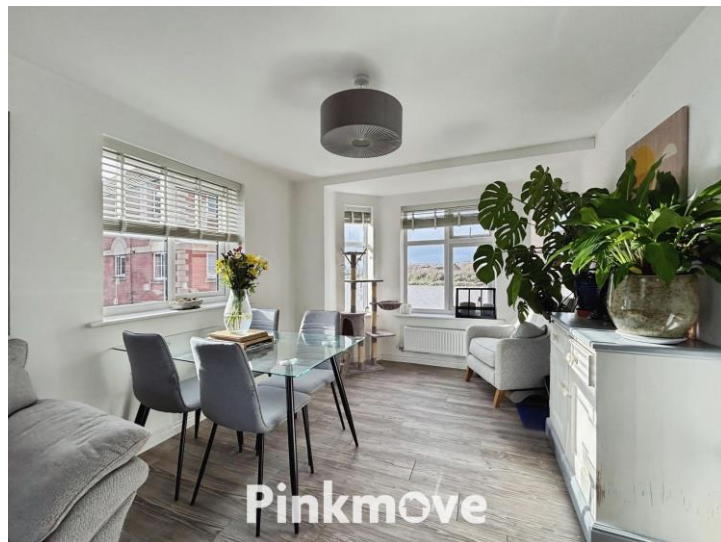
The location is exceptionally well-connected and is within close proximity of Newport Town Centre, offering a fantastic selection of shops, restaurants, cafés, gyms, and leisure facilities.

Scenic riverside walks are right on your doorstep—an ideal setting for morning jogs, weekend strolls, or simply unwinding by the water.

Families will appreciate being close to reputable local schools, while commuters benefit from excellent transport links, including easy access to major road networks and convenient rail connections to Cardiff and Bristol.

This blend of comfort, convenience, and lifestyle makes the property a standout choice in a highly sought-after location.





Accommodation

Entrance Hall

Living Room

19' 9" plus bay x 9' 10" (6.02m plus bay x 3.00m)

Kitchen

10' 7" x 5' 9" (3.23m x 1.75m)

Bedroom One

10' 3" x 10' 5" plus wardrobes (3.12m x 3.17m plus wardrobes)

Bedroom Two

13' 2" max x 8' 4" max (4.01m max x 2.54m max)

Bathroom

01633 746088

team@pinkmove.co.uk

Pinkmove

Floorplan

Ground Floor

Approx. 59.4 sq. metres (639.3 sq. feet)



Total area: approx. 59.4 sq. metres (639.3 sq. feet)

9 Francis Atkins Close, Newport

Important Information

Note while we endeavour to make our sales details accurate and reliable, if there is any point which is of particular interest to you, please contact the office and we will be pleased to confirm the position for you. We have not personally tested any apparatus, equipment, fixtures, fittings or services and cannot verify they are in working order or fit for their purposes. Nothing in these particulars is intended to indicate that carpets or curtains, furnishings or fittings, electrical goods (whether wired or not). Gas fires or light fittings or any other fixtures not expressly included form part of the property offered for sale. This computer generated Floorplan, if applicable, is intended as a general guide to the layout and design of the property. It is not to scale and should not be relied upon for dimensions. Tenure: We cannot confirm the tenure of the property as we have not had access to the legal documents. The buyer is advised to obtain verification from their solicitor or surveyor.

Peter Alan Limited is registered in England and Wales under company number 2073153, Registered Office is Cumbria House, 16-20 Hockliffe Street, Leighton Buzzard, Bedfordshire, LU7 1GN. VAT Registration Number is 500 2481 05. For activities relating to regulated mortgages and non-investment insurance contracts, Peter Alan Limited is an appointed representative of Connells Limited which is authorised and regulated by the Financial Conduct Authority. Connells Limited's Financial Services Register number is 302221. Most buy-to-let

