



## Stockton Road

**Guide Price £250,000 - £260,000**

- Three Bedrooms
- Well Maintained, Enclosed Rear Garden
- Two Reception Rooms
- Modern Kitchen with Breakfast Bar
- Contemporary Family Bathroom
- Off Road Parking
- Close to Shops, Schools and Local Amenities
- Excellent Transport Links
- EPC Rating: Awaited



 3  1  2

**Pinkmove**

01633 746088  
team@pinkmove.co.uk





## About the property

A beautifully presented three-bedroom semi-detached home on the sought-after Stockton Road, Newport, offering modern interiors, a practical layout and excellent access to local amenities.

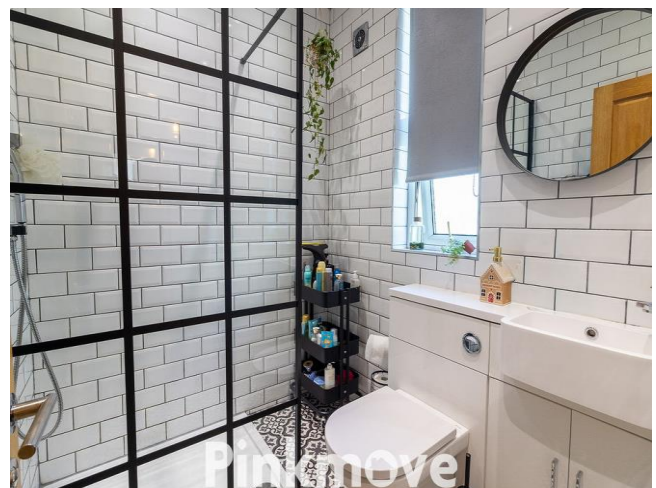
Set in a popular residential area close to reputable schools, convenient shops and strong transport links into Newport city centre and the M4, this property is ideal for families, first-time buyers and commuters.

Inside, a welcoming hallway leads to a bright front dining room, perfect for everyday meals and entertaining. The central lounge offers a cosy, relaxing space and flows through double doors into the modern kitchen, complete with contemporary units, a breakfast bar and access to the rear garden.

The garden is well designed for low-maintenance outdoor living, featuring a generous decking area, a tidy lawn and a useful brick-built shed.

Upstairs, the property offers three well-proportioned bedrooms alongside a family bathroom. To the front, off-road parking for one vehicle adds convenience.

A move-in-ready home in a prime Newport location.







## Accommodation

### Dining Room

11' 1" x 10' 2" ( 3.38m x 3.10m )

### Lounge

11' 5" x 16' 5" ( 3.48m x 5.00m )

### Kitchen

8' 7" x 15' 6" ( 2.62m x 4.72m )

### Bedroom 1

11' 4" x 10' 4" ( 3.45m x 3.15m )

### Bedroom 2

11' 2" x 8' 8" ( 3.40m x 2.64m )

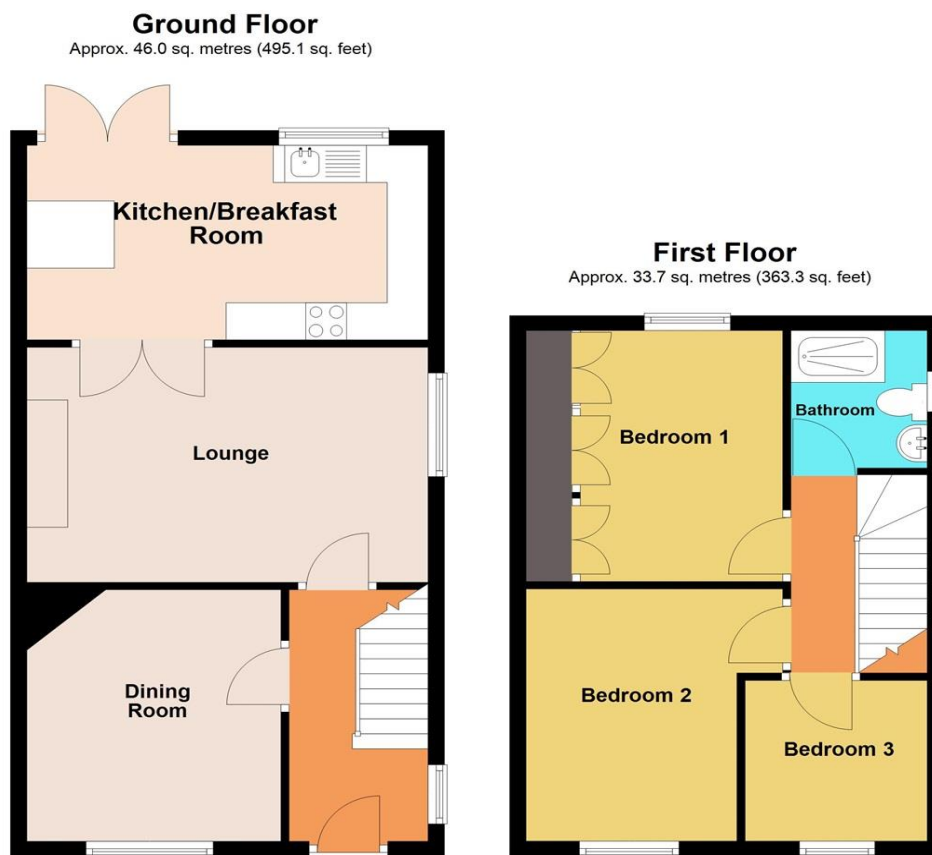
### Bedroom 3

7' 1" x 7' 4" ( 2.16m x 2.24m )

### Bathroom

6' x 5' 6" ( 1.83m x 1.68m )

## Floorplan



Total area: approx. 79.7 sq. metres (858.4 sq. feet)  
**115 Stockton Road**

## Important Information

Note while we endeavour to make our sales details accurate and reliable, if there is any point which is of particular interest to you, please contact the office and we will be pleased to confirm the position for you. We have not personally tested any apparatus, equipment, fixtures, fittings or services and cannot verify they are in working order or fit for their purposes. Nothing in these particulars is intended to indicate that carpets or curtains, furnishings or fittings, electrical goods (whether wired or not). Gas fires or light fittings or any other fixtures not expressly included form part of the property offered for sale. This computer generated Floorplan, if applicable, is intended as a general guide to the layout and design of the property. It is not to scale and should not be relied upon for dimensions. Tenure: We cannot confirm the tenure of the property as we have not had access to the legal documents. The buyer is advised to obtain verification from their solicitor or surveyor.

Peter Alan Limited is registered in England and Wales under company number 2073153, Registered Office is Cumbria House, 16-20 Hockliffe Street, Leighton Buzzard, Bedfordshire, LU7 1GN. VAT Registration Number is 500 2481 05. For activities relating to regulated mortgages and non-investment insurance contracts, Peter Alan Limited is an appointed representative of Connells Limited which is authorised and regulated by the Financial Conduct Authority. Connells Limited's Financial Services Register number is 302221. Most buy-to-let