



Thornbury Park, Guide Price £175,000 to £180,000

- Living Room
- Open Plan Kitchen/Diner
- Enclosed Rear Garden
- Downstairs Wc
- Family Bathroom
- Close to Shops, Schools and Amenities
- Excellent Transport Links
- EPC Rating: C



 3  1  1

Pinkmove

01633 746088
team@pinkmove.co.uk



About the property

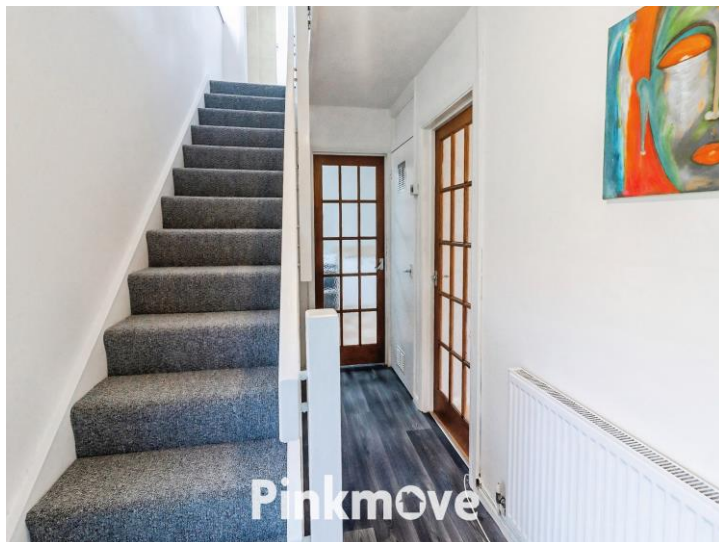
Introducing this three-bedroom mid-terrace home located in the Thornbury Park development in Rogerstone, Newport.

The property offers a practical layout ideal for modern family living. On the ground floor, you'll find a spacious living room, a convenient downstairs WC, and an open-plan kitchen and dining area that creates a welcoming space for entertaining. From here a back door leads directly to the enclosed rear garden, which features a combination of patio and lawn—perfect for relaxing or hosting gatherings.

Upstairs, the home boasts a contemporary family bathroom and three versatile bedrooms, providing flexibility for family, guests, or a home office.

Thornbury Park enjoys an excellent location with a strong sense of community and easy access to local amenities. Families will appreciate the proximity to well-regarded schools, including Rogerstone Primary just a short walk away and Bassaleg School within a mile. For commuters, transport links are superb: Pye Corner railway station is approximately 0.3 miles away, offering direct connections to Cardiff, while the nearby M4 motorway provides swift access to Bristol and beyond. Everyday conveniences are close at hand, with local shops, supermarkets, and healthcare facilities all within easy reach. This home combines comfort, convenience, and a desirable setting, making it an ideal choice for first-time buyers, families, or those looking to downsize in a vibrant and well-connected area.





Accommodation

Living Room

11' 1" x 14' (3.38m x 4.27m)

Kitchen/Diner

17' 5" x 11' 9" (5.31m x 3.58m)

Max Measurements

Downstairs Wc

5' 1" x 3' 6" (1.55m x 1.07m)

Bedroom 1

10' 6" x 10' 2" (3.20m x 3.10m)

Bedroom 2

8' 11" x 13' 8" (2.72m x 4.17m)

Bedroom 3

8' 2" x 8' 5" (2.49m x 2.57m)

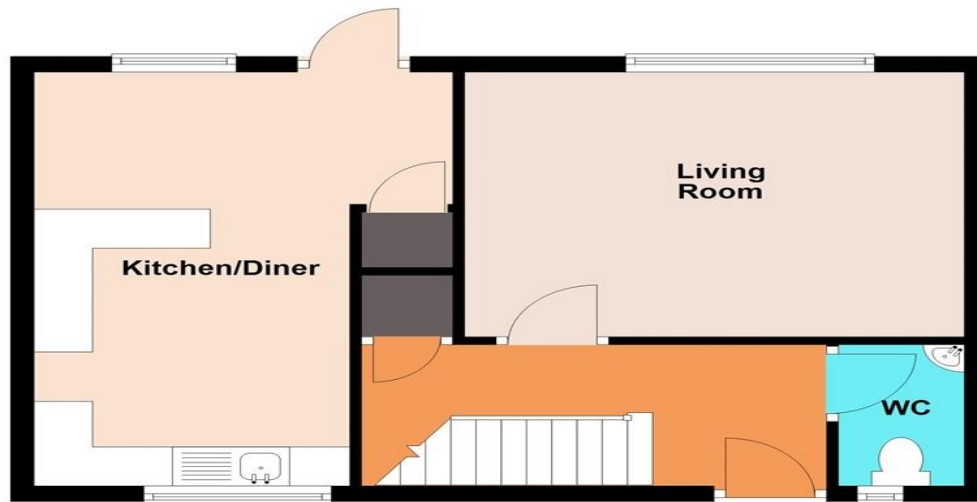
Bathroom

6' 6" x 5' 6" (1.98m x 1.68m)

Floorplan

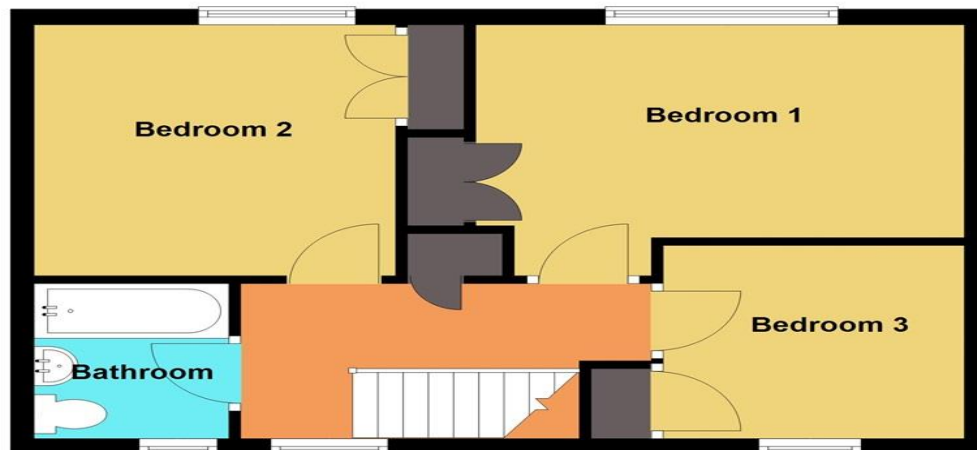
Ground Floor

Approx. 42.1 sq. metres (452.9 sq. feet)



First Floor

Approx. 42.1 sq. metres (452.9 sq. feet)



Total area: approx. 84.1 sq. metres (905.7 sq. feet)
77 Thornbury Park

Important Information

Note while we endeavour to make our sales details accurate and reliable, if there is any point which is of particular interest to you, please contact the office and we will be pleased to confirm the position for you. We have not personally tested any apparatus, equipment, fixtures, fittings or services and cannot verify they are in working order or fit for their purposes. Nothing in these particulars is intended to indicate that carpets or curtains, furnishings or fittings, electrical goods (whether wired or not). Gas fires or light fittings or any other fixtures not expressly included form part of the property offered for sale. This computer generated Floorplan, if applicable, is intended as a general guide to the layout and design of the property. It is not to scale and should not be relied upon for dimensions. Tenure: We cannot confirm the tenure of the property as we have not had access to the legal documents. The buyer is advised to obtain verification from their solicitor or surveyor.

Peter Alan Limited is registered in England and Wales under company number 2073153, Registered Office is Cumbria House, 16-20 Hockliffe Street, Leighton Buzzard, Bedfordshire, LU7 1GN. VAT Registration Number is 500 2481 05. For activities relating to regulated mortgages and non-investment insurance contracts, Peter Alan Limited is an appointed representative of Connells Limited which is authorised and regulated by the Financial Conduct Authority. Connells Limited's Financial Services Register number is 302221. Most buy-to-let