



Beechfield Avenue, NP19 8AF

Offers in the region of £250,000

- Three Bedrooms
- Generously Sized Modern Kitchen with Central Island
- Impressive Rear Garden
- Driveway
- Family Bathroom
- Close to Shops, Schools and Leisure Facilities
- Excellent Transport Links
- EPC Rating: Awaited



 3  1  1

Pinkmove

01633 746088
team@pinkmove.co.uk



Pinkmove

About the property

Located on Beechfield Avenue in Newport, this impressive three-bedroom semi-detached home offers spacious and stylish living in a well-connected residential area.

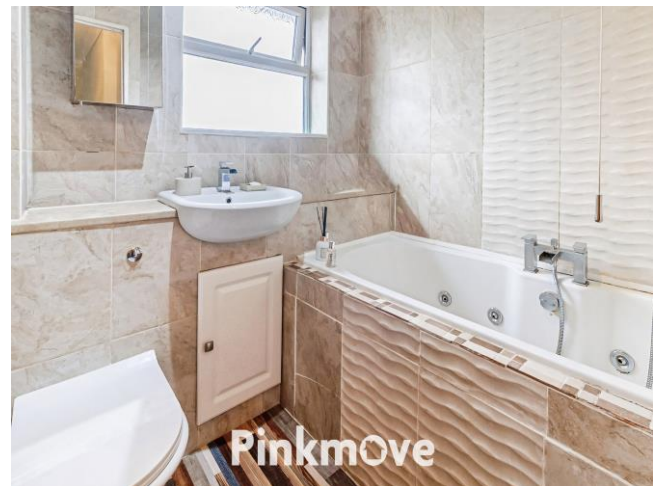
Spanning the right side of the property is a spacious reception room, ideal for relaxing or entertaining. To the left, a generously sized kitchen boasts ample storage and worktop space, complemented by a large central island that doubles as a breakfast bar or informal dining area. French doors open out to an impressive garden, featuring a generous mix of patio and lawn — perfect for outdoor dining, play, or gardening.

Upstairs, the property offers three well-proportioned bedrooms, each providing a comfortable retreat with scope for personalisation. A modern, well-fitted bathroom serves the household with convenience and style.

The location is ideal for families and professionals alike, with Somerton Primary School just 0.3 miles away, Eveswell Primary at 0.5 miles, and St Julian's Secondary School within 0.9 miles. Local shops are within easy walking distance whilst Beechwood Park offers nearby green space for leisure.

Transport links are excellent, with regular bus services nearby and Newport railway station approximately 1.6 miles away, offering direct connections to Cardiff, Bristol, and London. The M4 is also easily accessible, making commuting straightforward.

With its modern features, impressive garden and interior spaces, this house would be ideal for families or those looking to upsize.



Pinkmove



Pinkmove



Accommodation

Living Room

21' x 10' 8" (6.40m x 3.25m)

Kitchen

15' 3" x 17' (4.65m x 5.18m)

Porch

2' 9" x 8' (0.84m x 2.44m)

Bedroom 1

9' 9" x 16' (2.97m x 4.88m)

Bedroom 2

11' 2" x 12' (3.40m x 3.66m)

Bedroom 3

9' 11" x 9' (3.02m x 2.74m)

Bathroom

6' 11" x 6' 8" (2.11m x 2.03m)

Max measurements

Floorplan



Total area: approx. 100.7 sq. metres (1084.2 sq. feet)
6 Beechfield Avenue

Important Information

Note while we endeavour to make our sales details accurate and reliable, if there is any point which is of particular interest to you, please contact the office and we will be pleased to confirm the position for you. We have not personally tested any apparatus, equipment, fixtures, fittings or services and cannot verify they are in working order or fit for their purposes. Nothing in these particulars is intended to indicate that carpets or curtains, furnishings or fittings, electrical goods (whether wired or not). Gas fires or light fittings or any other fixtures not expressly included form part of the property offered for sale. This computer generated Floorplan, if applicable, is intended as a general guide to the layout and design of the property. It is not to scale and should not be relied upon for dimensions. Tenure: We cannot confirm the tenure of the property as we have not had access to the legal documents. The buyer is advised to obtain verification from their solicitor or surveyor.

Peter Alan Limited is registered in England and Wales under company number 2073153, Registered Office is Cumbria House, 16-20 Hockliffe Street, Leighton Buzzard, Bedfordshire, LU7 1GN. VAT Registration Number is 500 2481 05. For activities relating to regulated mortgages and non-investment insurance contracts, Peter Alan Limited is an appointed representative of Connells Limited which is authorised and regulated by the Financial Conduct Authority. Connells Limited's Financial Services Register number is 302221. Most buy-to-let