



Pinkmove

## Arlington Close, NP20 6QF

**Guide Price £375,000 - £380,000**

- Three-Bedroom Detached House
- Beautifully Presented, Spacious Garden
- Large Garage with Driveway for up to Three Cars
- Two Reception Rooms, Study, Dining Room, and Utility Room
- Downstairs WC, En-Suite to Master, and Family Bathroom
- Walking Distance to Shops and Schools
- Excellent Transport Links to Cwmbran, Newport Town, and the M4 for Cardiff, Bristol, and Beyond



 3  2  2

**Pinkmove**

01633 746088  
team@pinkmove.co.uk



## About the property

Beautifully presented detached home in Malpas with three double bedrooms, two reception rooms, study, utility, and landscaped garden. Includes large garage, driveway for three cars, and excellent access to schools, amenities, transport links, and the M4.





## Accommodation

### Living Room

14' 2" x 10' 5" ( 4.32m x 3.17m )

### Lounge

11' 2" x 10' 5" ( 3.40m x 3.17m )

### Study

10' 6" x 7' 6" ( 3.20m x 2.29m )

### Dining Room

7' x 11' 11" ( 2.13m x 3.63m )

### Kitchen

8' 11" x 10' 10" ( 2.72m x 3.30m )

### Utility

9' 6" x 2' 6" ( 2.90m x 0.76m )

### Downstairs Wc

4' 4" x 4' 3" ( 1.32m x 1.30m )

### Garage

23' 10" x 11' ( 7.26m x 3.35m )

### Bedroom 1

14' 5" x 10' 5" ( 4.39m x 3.17m )

### Bedroom 2

9' 4" x 11' 10" ( 2.84m x 3.61m )

### Bedroom 3

11' 3" x 10' 5" ( 3.43m x 3.17m )

### Bathroom

6' 6" x 11' 4" ( 1.98m x 3.45m )

Max Measurements

### En-Suite

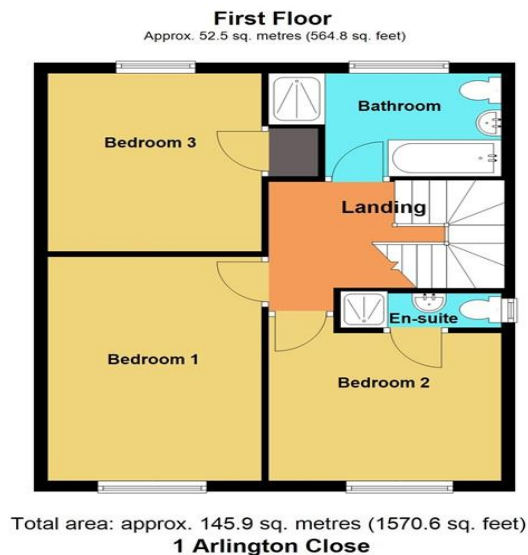
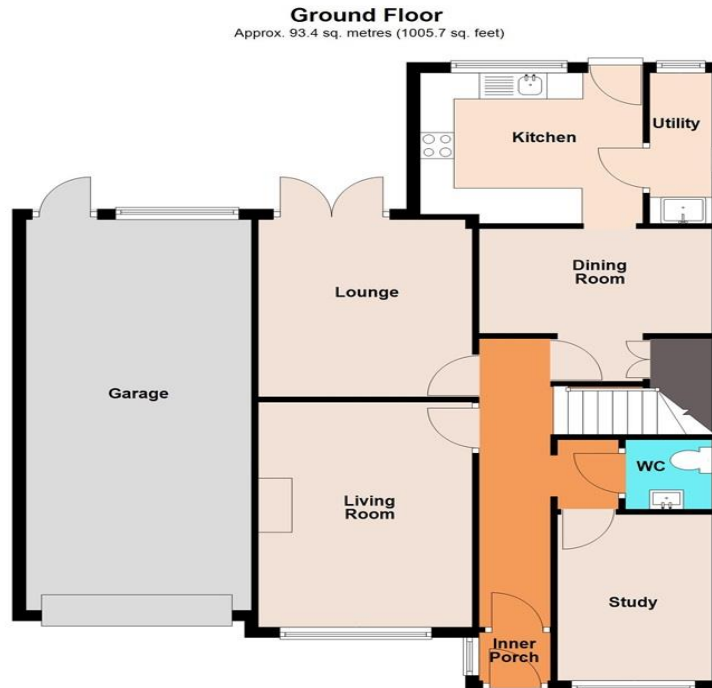
2' 6" x 7' 11" ( 0.76m x 2.41m )

01633 746088

team@pinkmove.co.uk

**Pinkmove**

## Floorplan



## Important Information

Note while we endeavour to make our sales details accurate and reliable, if there is any point which is of particular interest to you, please contact the office and we will be pleased to confirm the position for you. We have not personally tested any apparatus, equipment, fixtures, fittings or services and cannot verify they are in working order or fit for their purposes. Nothing in these particulars is intended to indicate that carpets or curtains, furnishings or fittings, electrical goods (whether wired or not). Gas fires or light fittings or any other fixtures not expressly included form part of the property offered for sale. This computer generated Floorplan, if applicable, is intended as a general guide to the layout and design of the property. It is not to scale and should not be relied upon for dimensions. Tenure: We cannot confirm the tenure of the property as we have not had access to the legal documents. The buyer is advised to obtain verification from their solicitor or surveyor.

Peter Alan Limited is registered in England and Wales under company number 2073153, Registered Office is Cumbria House, 16-20 Hockliffe Street, Leighton Buzzard, Bedfordshire, LU7 1GN. VAT Registration Number is 500 2481 05. For activities relating to regulated mortgages and non-investment insurance contracts, Peter Alan Limited is an appointed representative of Connells Limited which is authorised and regulated by the Financial Conduct Authority. Connells Limited's Financial Services Register number is 302221. Most buy-to-let

