



Collier Street, Guide Price £170,000 to £175,000

- Two light-filled reception rooms
- Walk-in pantry in kitchen
- Enclosed rear garden with seating area
- Excellent transport links & local amenities nearby
- Ideal first-time buy or investment opportunity
- Two spacious double bedrooms
- EPC Rating: C



2 1 2

Pinkmove

01633 746088
team@pinkmove.co.uk



About the property

Stylish Two-Bedroom Home in Prime Newport Location – Ideal for First-Time Buyers or Investors!

This beautifully presented two double bedroom mid-terrace home is perfectly positioned in a highly convenient area of Newport, offering easy access to local amenities, public transport links, and major road networks—making it a superb choice for commuters, first-time buyers, or savvy investors.

Step inside to discover a welcoming hallway with handy storage space, leading to two generous reception rooms. The front room is bright and airy, ideal as a dining space, while the main living room boasts a charming ornate fireplace and French doors opening onto the garden—perfect for relaxing or entertaining.

To the rear, the well-equipped kitchen features ample worktop space, built-in units, room for appliances, and a walk-in pantry—a rare and practical bonus. Direct access to the garden makes outdoor dining a breeze.

Upstairs, you'll find two spacious double bedrooms and a modern bathroom with a white suite and overhead shower. Outside, the fully enclosed rear garden offers a large seating area—ideal for summer BBQs, family time, or simply unwinding in privacy.





Accommodation

Hall

10' 11" x 5' 5" (3.33m x 1.65m)

Dining Room

10' 11" x 10' 5" (3.33m x 3.17m)

Living Room

16' 2" x 11' (4.93m x 3.35m)

Kitchen

9' 11" x 8' 9" (3.02m x 2.67m)

Bedroom 1

16' 2" x 10' 11" (4.93m x 3.33m)

Bedroom 2

11' x 10' (3.35m x 3.05m)

Bathroom

7' 9" x 5' 10" (2.36m x 1.78m)

01633 746088

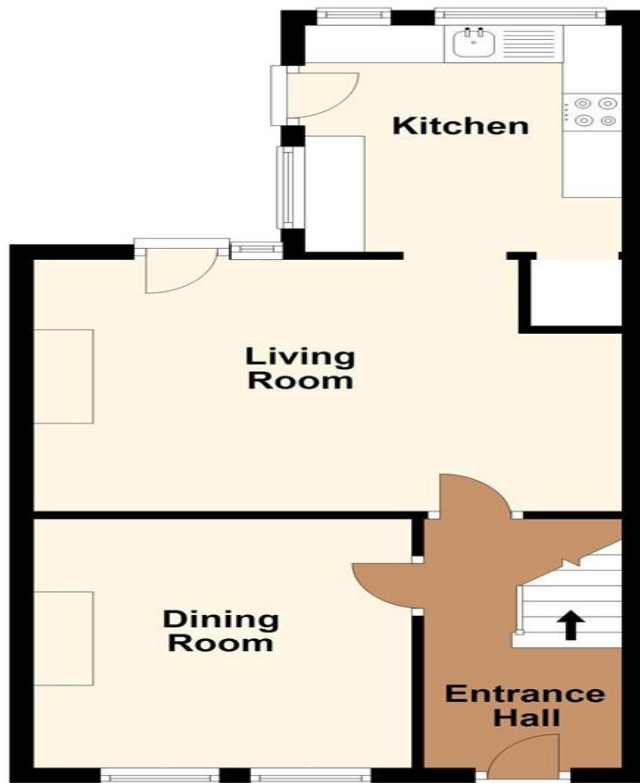
team@pinkmove.co.uk

Pinkmove

Floorplan

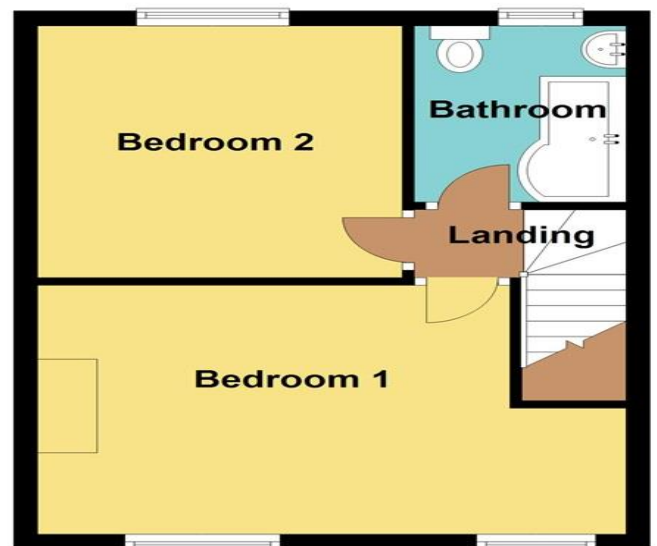
Ground Floor

Approx. 41.9 sq. metres (450.5 sq. feet)



First Floor

Approx. 33.5 sq. metres (360.9 sq. feet)



Total area: approx. 75.4 sq. metres (811.4 sq. feet)
16 Collier Street

Important Information

Note while we endeavour to make our sales details accurate and reliable, if there is any point which is of particular interest to you, please contact the office and we will be pleased to confirm the position for you. We have not personally tested any apparatus, equipment, fixtures, fittings or services and cannot verify they are in working order or fit for their purposes. Nothing in these particulars is intended to indicate that carpets or curtains, furnishings or fittings, electrical goods (whether wired or not). Gas fires or light fittings or any other fixtures not expressly included form part of the property offered for sale. This computer generated Floorplan, if applicable, is intended as a general guide to the layout and design of the property. It is not to scale and should not be relied upon for dimensions. Tenure: We cannot confirm the tenure of the property as we have not had access to the legal documents. The buyer is advised to obtain verification from their solicitor or surveyor.

Peter Alan Limited is registered in England and Wales under company number 2073153, Registered Office is Cumbria House, 16-20 Hockliffe Street, Leighton Buzzard, Bedfordshire, LU7 1GN. VAT Registration Number is 500 2481 05. For activities relating to regulated mortgages and non-investment insurance contracts, Peter Alan Limited is an appointed representative of Connells Limited which is authorised and regulated by the Financial Conduct Authority. Connells Limited's Financial Services Register number is 302221. Most buy-to-let

