



Primrose Court

Guide Price £475,000 - £500,000

- Guide Price £475,000 - £500,000
- Detached Home
- Four Spacious Bedrooms
- En-Suite to Master
- Driveway that Comfortably Sits Four Cars
- Beautifully Landscaped Rear Garden
- Conservatory with Heated Flooring
- Sought-after Location
- EPC Rating: C



 4  1  2

Pinkmove

01633 746088
team@pinkmove.co.uk



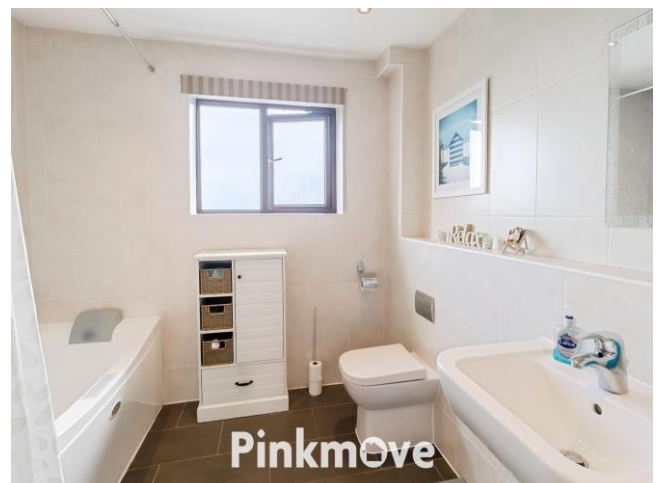
Pinkmove

About the property

Spacious family home with lounge, conservatory, open-plan kitchen, dining room, study, utility, WC, and garage. Four bedrooms, master with en suite and built-in wardrobes, plus jacuzzi bath in family bathroom. Includes landscaped garden, driveway for four cars, and garage.



Pinkmove



Pinkmove



Accommodation

Study

9' x 11' 9" (2.74m x 3.58m)

Living Room

18' 3" x 11' 8" (5.56m x 3.56m)

Conservatory

14' 6" x 20' 1" (4.42m x 6.12m)

Max Measurements

Kitchen

11' 1" x 18' 2" (3.38m x 5.54m)

Utility

5' 9" x 10' 11" (1.75m x 3.33m)

Garage

17' 10" x 10' 11" (5.44m x 3.33m)

Dining Room

11' 8" x 11' 8" (3.56m x 3.56m)

Bathroom

8' 4" x 8' 11" (2.54m x 2.72m)

Max Measurements

Bedroom 1

13' x 11' 11" (3.96m x 3.63m)

En-Suite

4' 8" x 6' 10" (1.42m x 2.08m)

Max Measurements

Bedroom 2

11' 8" x 11' (3.56m x 3.35m)

Bedroom 3

9' 4" x 11' 9" (2.84m x 3.58m)

Bedroom 4

9' 8" x 8' 7" (2.95m x 2.62m)

Floorplan



Total area: approx. 189.4 sq. metres (2038.7 sq. feet)
64 Primrose Court

Important Information

Note while we endeavour to make our sales details accurate and reliable, if there is any point which is of particular interest to you, please contact the office and we will be pleased to confirm the position for you. We have not personally tested any apparatus, equipment, fixtures, fittings or services and cannot verify they are in working order or fit for their purposes. Nothing in these particulars is intended to indicate that carpets or curtains, furnishings or fittings, electrical goods (whether wired or not). Gas fires or light fittings or any other fixtures not expressly included form part of the property offered for sale. This computer generated Floorplan, if applicable, is intended as a general guide to the layout and design of the property. It is not to scale and should not be relied upon for dimensions. Tenure: We cannot confirm the tenure of the property as we have not had access to the legal documents. The buyer is advised to obtain verification from their solicitor or surveyor.

Peter Alan Limited is registered in England and Wales under company number 2073153, Registered Office is Cumbria House, 16-20 Hockliffe Street, Leighton Buzzard, Bedfordshire, LU7 1GN. VAT Registration Number is 500 2481 05. For activities relating to regulated mortgages and non-investment insurance contracts, Peter Alan Limited is an appointed representative of Connells Limited which is authorised and regulated by the Financial Conduct Authority. Connells Limited's Financial Services Register number is 302221. Most buy-to-let