



Obama Grove, NP10 9NP

Guide Price £400,000

- Guide Price £400,000-£425,000
- En-Suite to Master Bedroom
- Contemporary Open-Plan Kitchen/Diner
- Brick built Orangery with Bi-Fold Doors and Integrated blinds
- Single Garage with Driveway
- Sunny Low-Maintenance Garden
- Close To Local Primary School and Transport Links
- Colonial Shutters Throughout



 3
  1
  2

Pinkmove

01633 746088
team@pinkmove.co.uk



Pinkmove

About the property

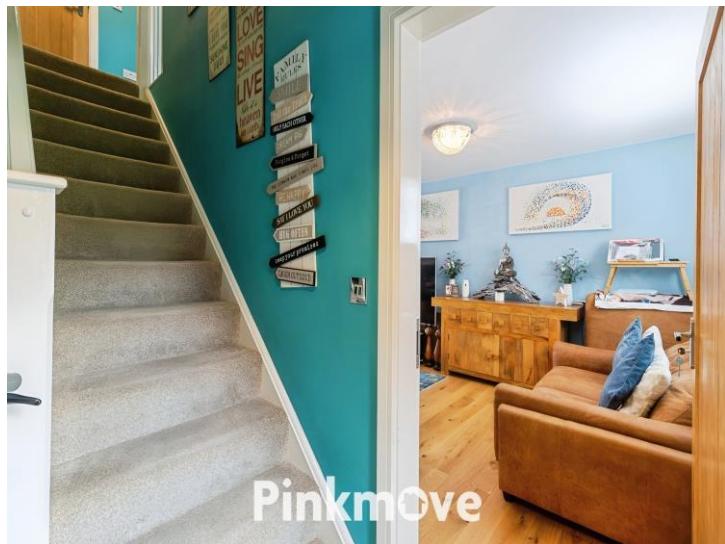
Beautifully presented detached home in a quiet cul-de-sac, close to schools and transport. Features include a spacious living room, open-plan kitchen with orangery, three bedrooms, en-suite, landscaped garden, garage, and driveway. Ideal for modern family living with seamless indoor-outdoor flow.



Pinkmove



Pinkmove



Accommodation

Living Room

19' x 10' (5.79m x 3.05m)

Kitchen/Diner

19' x 12' (5.79m x 3.66m)

Max Measurements

Orangery

15' x 12' (4.57m x 3.66m)

Downstairs W/C

3' x 5' (0.91m x 1.52m)

Bedroom 1

11' x 10' (3.35m x 3.05m)

Max Measurements

Bedroom 2

11' x 10' (3.35m x 3.05m)

Bedroom 3

7' x 10' 10" (2.13m x 3.30m)

Max Measurements

Bathroom

4' 11" x 9' 10" (1.50m x 3.00m)

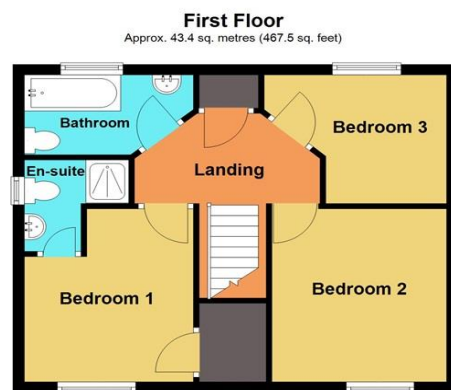
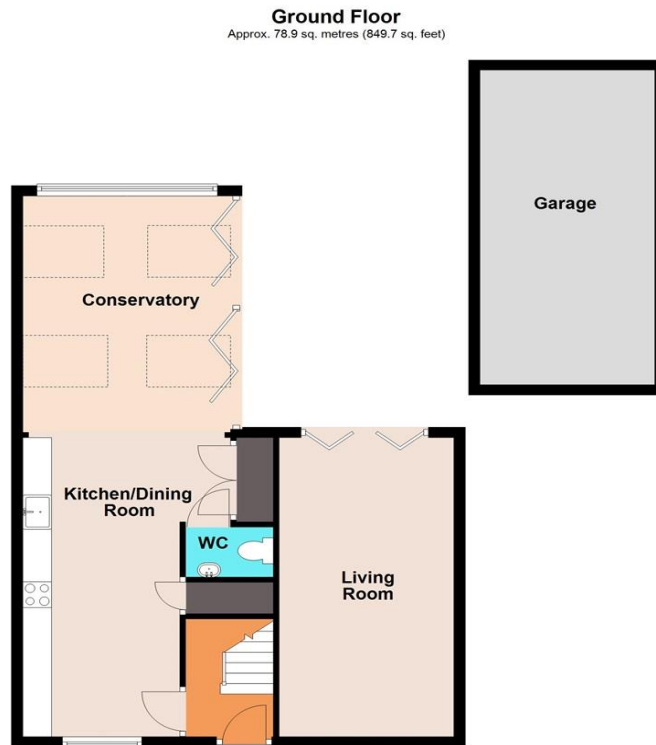
Max Measurements

01633 746088

team@pinkmove.co.uk

Pinkmove

Floorplan



Total area: approx. 122.4 sq. metres (1317.2 sq. feet)
28 Obama Grove

Important Information

Note while we endeavour to make our sales details accurate and reliable, if there is any point which is of particular interest to you, please contact the office and we will be pleased to confirm the position for you. We have not personally tested any apparatus, equipment, fixtures, fittings or services and cannot verify they are in working order or fit for their purposes. Nothing in these particulars is intended to indicate that carpets or curtains, furnishings or fittings, electrical goods (whether wired or not). Gas fires or light fittings or any other fixtures not expressly included form part of the property offered for sale. This computer generated Floorplan, if applicable, is intended as a general guide to the layout and design of the property. It is not to scale and should not be relied upon for dimensions. Tenure: We cannot confirm the tenure of the property as we have not had access to the legal documents. The buyer is advised to obtain verification from their solicitor or surveyor.

Peter Alan Limited is registered in England and Wales under company number 2073153, Registered Office is Cumbria House, 16-20 Hockliffe Street, Leighton Buzzard, Bedfordshire, LU7 1GN. VAT Registration Number is 500 2481 05. For activities relating to regulated mortgages and non-investment insurance contracts, Peter Alan Limited is an appointed representative of Connells Limited which is authorised and regulated by the Financial Conduct Authority. Connells Limited's Financial Services Register number is 302221. Most buy-to-let

