



Pinkmove

Arosfa Pontymason

guide price £375,000

- Detached Dormer Bungalow
- Five Bedrooms
- Two Reception Rooms
- Generous Front and Rear gardens
- Driveway to Single Garage
- Sought after Location Close To M4
- EPC Rating: Awaited

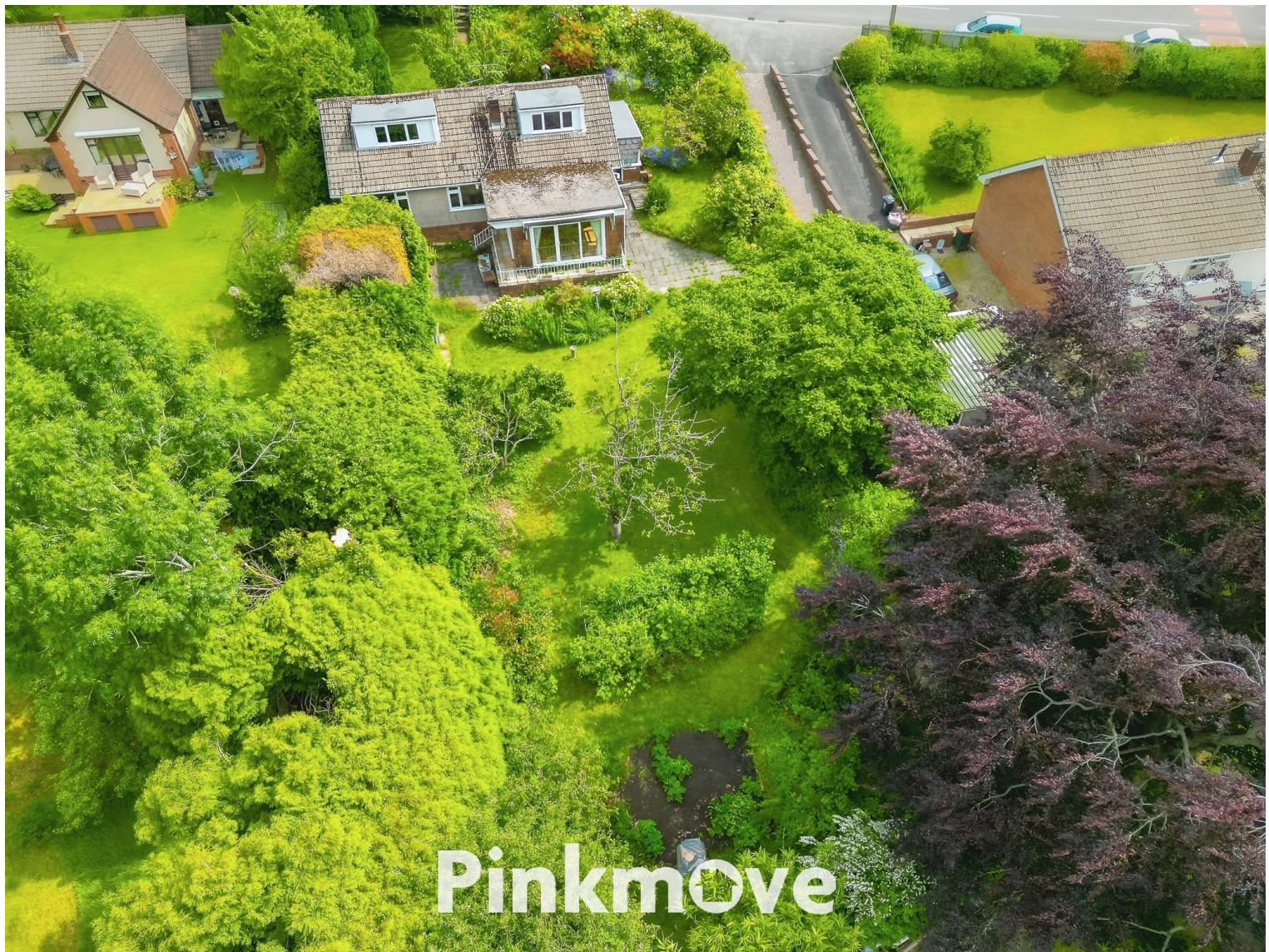


Pinkmove

5 1 2

Pinkmove

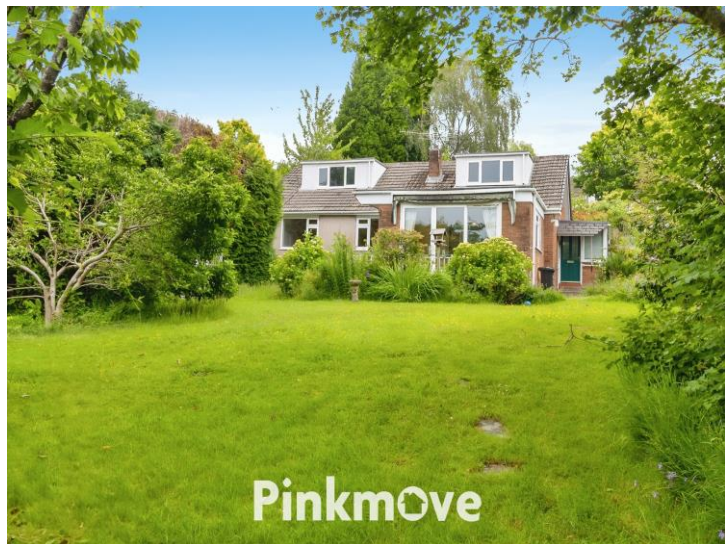
01633 746088
team@pinkmove.co.uk



About the property

An exceptional five-bedroom detached dormer bungalow offering spacious living, two elegant reception rooms, a well-equipped kitchen, and a family bathroom. Enjoy private front and rear gardens, a single garage, and driveway parking. A rare opportunity to secure a beautifully presented home.





Accommodation

Agents Note

The sale of this property is subject to grant of probate. Please seek an update from the branch with regards to the potential time frames involved.

Lounge/Diner

17' 7" x 16' 11" (5.36m x 5.16m)
max measurements

Reception Room

14' 1" x 12' 1" (4.29m x 3.68m)

Kitchen

10' x 8' 10" (3.05m x 2.69m)

Porch

9' 4" x 5' 4" (2.84m x 1.63m)

W/C

2' 7" x 5' 4" (0.79m x 1.63m)

Bedroom 1

12' 5" x 10' 4" (3.78m x 3.15m)

Bedroom 2

12' x 10' 6" (3.66m x 3.20m)

Bedroom 3

10' 2" x 9' (3.10m x 2.74m)

Bathroom

5' 6" x 6' 6" (1.68m x 1.98m)

Bedroom 4

18' x 11' (5.49m x 3.35m)

Bedroom 5

10' 5" x 14' 5" (3.17m x 4.39m)

01633 746088

team@pinkmove.co.uk

Pinkmove

Floorplan

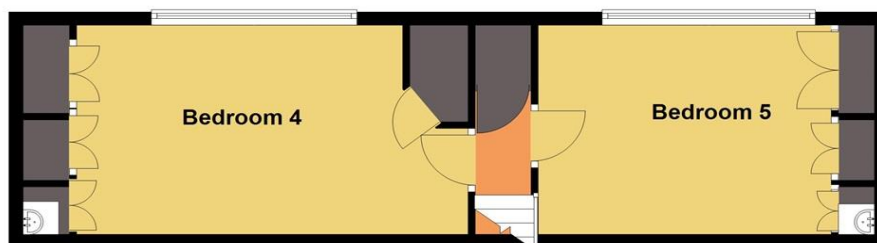
Ground Floor

Approx. 102.9 sq. metres (1107.5 sq. feet)



First Floor

Approx. 38.0 sq. metres (409.6 sq. feet)



Total area: approx. 140.9 sq. metres (1517.1 sq. feet)

Arosfa, Pontymason Lane

Important Information

Note while we endeavour to make our sales details accurate and reliable, if there is any point which is of particular interest to you, please contact the office and we will be pleased to confirm the position for you. We have not personally tested any apparatus, equipment, fixtures, fittings or services and cannot verify they are in working order or fit for their purposes. Nothing in these particulars is intended to indicate that carpets or curtains, furnishings or fittings, electrical goods (whether wired or not). Gas fires or light fittings or any other fixtures not expressly included form part of the property offered for sale. This computer generated Floorplan, if applicable, is intended as a general guide to the layout and design of the property. It is not to scale and should not be relied upon for dimensions. Tenure: We cannot confirm the tenure of the property as we have not had access to the legal documents. The buyer is advised to obtain verification from their solicitor or surveyor.

Peter Alan Limited is registered in England and Wales under company number 2073153, Registered Office is Cumbria House, 16-20 Hockliffe Street, Leighton Buzzard, Bedfordshire, LU7 1GN. VAT Registration Number is 500 2481 05. For activities relating to regulated mortgages and non-investment insurance contracts, Peter Alan Limited is an appointed representative of Connells Limited which is authorised and regulated by the Financial Conduct Authority. Connells Limited's Financial Services Register number is 302221. Most buy-to-let

